



ACE[®]

Additives and Intense Sweeteners

Conditions

Column: ACE 5 C18, 250 x 4.0mm

Part Number: ACE-121-2504

Mobile Phase: A: H₂O
B: MeCN
C: 1% TFA

Gradient:	T(mins)	%A	%B	%C
	0	88	2	10
	25	50	40	10
	30	30	60	10
	35	88	2	10

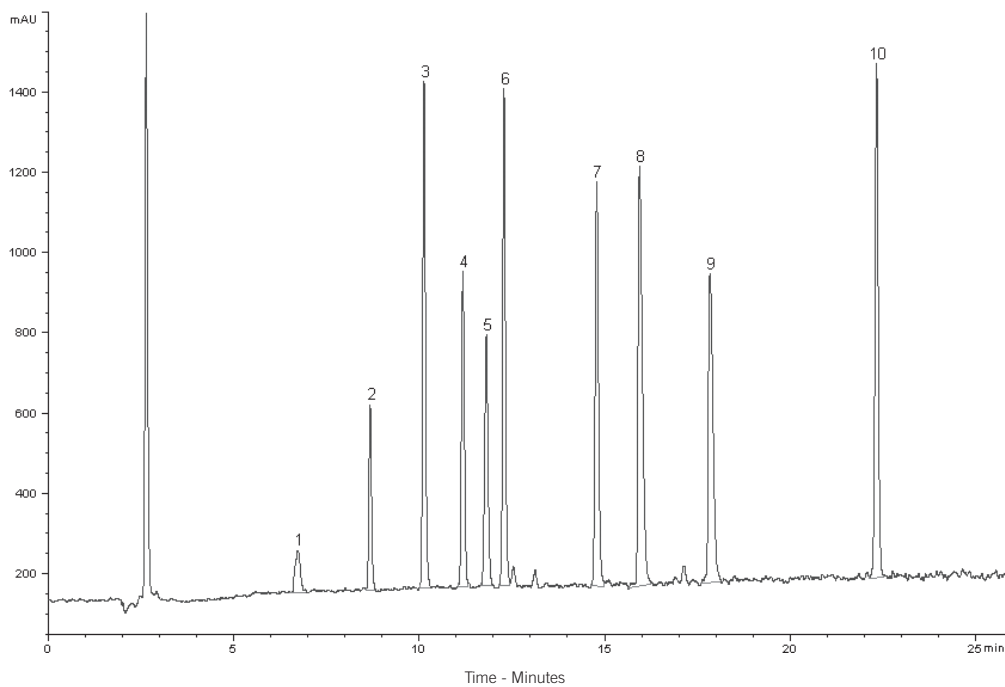
Flow Rate: 1.0ml/min

Temperature: 30°C

Detection: ELSD

Compounds

1. Acesulfame K
2. Theobromine
3. Theophylline
4. Cyclamate
5. Saccharin
6. Caffeine
7. Sucralose
8. Quinine sulphate
9. Aspartame
10. Neohesperidin dihydrochalcone



Reproduced with kind permission of Durham County Council, UK