

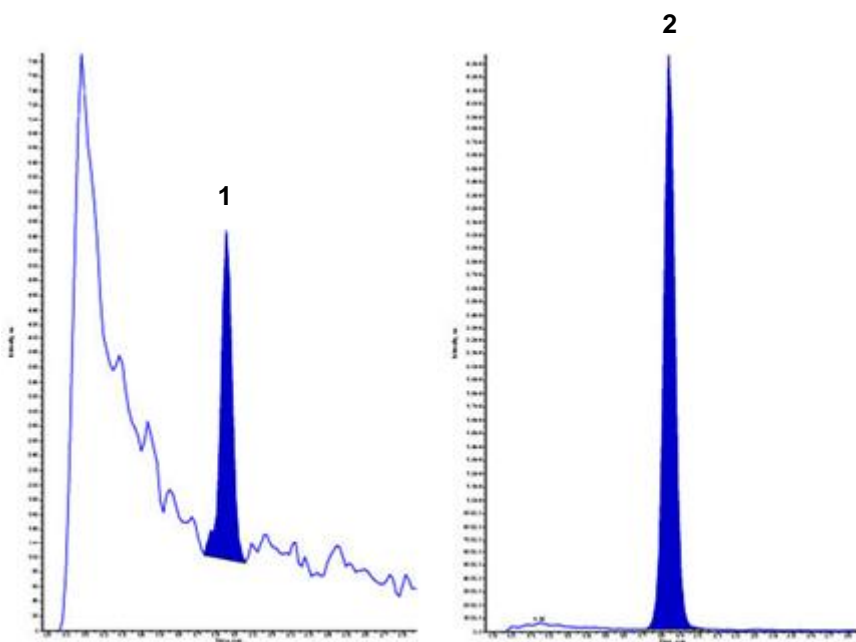
15-Hydroxy Lubiprostone in Human Plasma

ACE[®]
Ultra-inert
UHPLC & HPLC Columns

Application #AN1900

Conditions

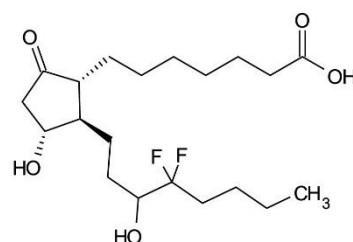
Column: ACE Excel 2 C18
Dimensions: 50 x 3.0 mm
Part Number: EXL-101-0503U
Mobile Phase: A: 0.1% formic acid in H₂O
B: MeCN
Flow Rate: 0.65 mL/min
Injection: 15 µL
Temperature: 35 °C
Detection: MDS Sciex API 5000
TurbolonSpray negative mode
IonSpray voltage -4500 V
Source Temperature 450 °C



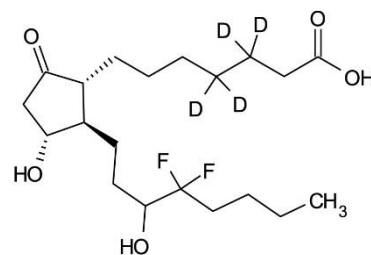
Lowest calibration standard sample containing 2.0 pg/mL in human EDTA K3 plasma.

Lubiprostone, a fatty acid derived from prostaglandin E1, is rapidly metabolised to 15-hydroxy lubiprostone.

Quantitation is based on 15-hydroxy lubiprostone, with the d4 analogue as internal standard.



1. 15-Hydroxy lubiprostone
 m/z 391.2 \rightarrow 373.2



2. 15-Hydroxy lubiprostone-d4 (IS)
 m/z 395.2 \rightarrow 377.2

Reproduced with permission of inVentiv Health Clinical, Quebec, Canada
© 2015 ACT Ltd. All rights reserved. All products are available worldwide.

For more information contact your local ACE distributor or visit
www.ace-hplc.com or email: info@ace-hplc.com


ACE[®]
UHPLC & HPLC
Columns