

17 α -Methyltestosterone in Freshwater Tilapia Aquaculture

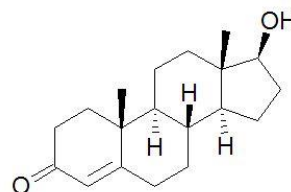
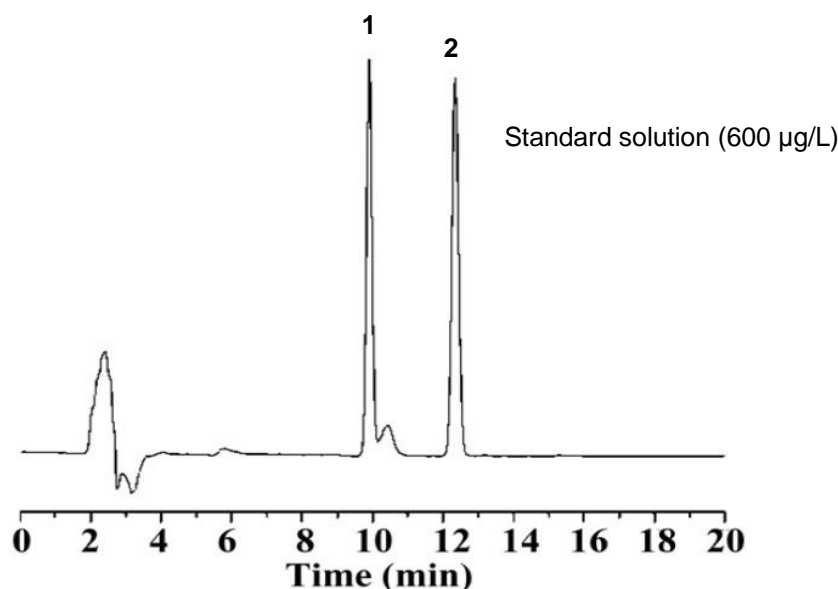
ACE[®]
Ultra-inert
UHPLC & HPLC Columns

Application #AN4340

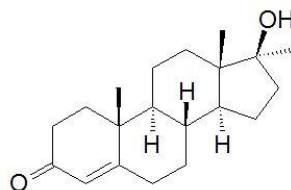
Conditions

Column:	ACE 5 C18
Dimensions:	250 x 4.6 mm
Part Number:	ACE-121-2546
Mobile Phase:	MeCN/H ₂ O (45:55 v/v)
Flow Rate:	1 mL/min
Injection:	20 μ L
Temperature:	25 $^{\circ}$ C
Detection:	UV, 245 nm

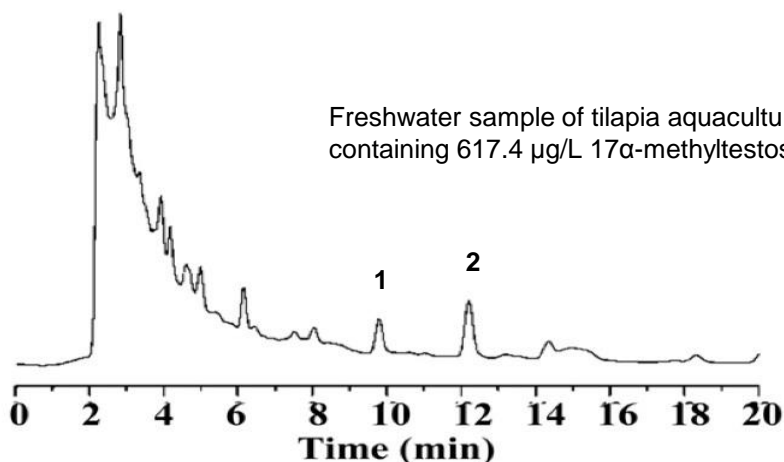
17 α -Methyltestosterone is used for sex reversal of tilapia fish in order to avoid overpopulation in ponds. It therefore has to be monitored in aqueous matrices to prevent release into the environment.



1. Testosterone (IS)



2. 17 α -Methyltestosterone



Barbosa IR, Lopes S, Oliveira R, Domingues I, Soares AMVM, Nogueira AJA. Determination of 17 α -Methyltestosterone in Freshwater Samples of Tilapia Farming by High Performance Liquid Chromatography, American Journal of Analytical Chemistry, (2013), 4, 207-211. <http://dx.doi.org/10.4236/ajac.2013.44026>

© 2015 ACT Ltd. All rights reserved. All products are available worldwide.

For more information contact your local ACE distributor or visit
www.ace-hplc.com or email: info@ace-hplc.com



ACE[®]
UHPLC & HPLC
Columns