

Chiral separation of 2-Phenylpropanol using the Avantor[®] Hichrom HI-DEX B-SE

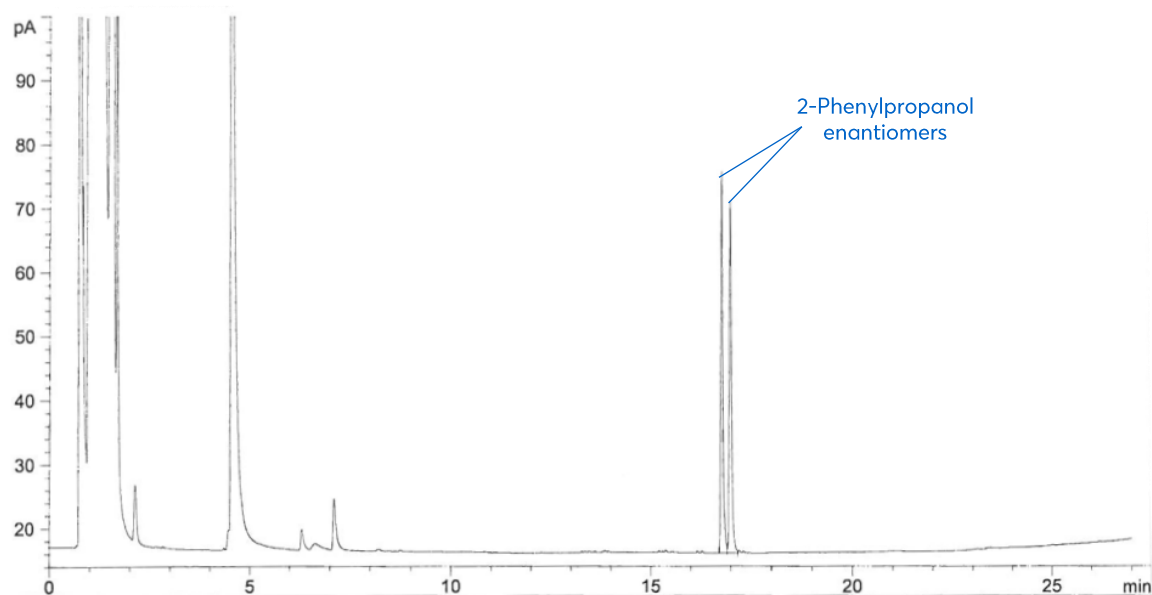


Figure 1: Chiral separation of 2-Phenylpropanol using the Avantor[®] Hichrom HI-DEX B-SE phase.

Method Details

CONDITIONS

Oven Program:	50 °C, 5 °C/min, 185 °C
Carrier Gas:	Hydrogen, 4 mL/min
Injector:	Split, 190 °C
Detector:	FID, 210 °C

The HI-DEX B-SE is a proprietary cyclodextrin phase with a unique selectivity for the separation of enantiomers. Useful in the analysis of chiral compounds in fragrances, pesticides and pharmaceuticals.

ORDERING TABLE

Product	Details	Dimensions	Part Number
Avantor® Hichrom HI-DEX B-SE	GC Column	0.25 mm, 0.25 µm, 30 m	HI72-25-025-30

Acknowledgement: Dr. A. Adler, University of Koln, Organic Chemistry Dept., Greinstrasse 4, Koln, Germany. Thanks also to Dr. R. Forche, "Dr. R. Forche Chromatographie".