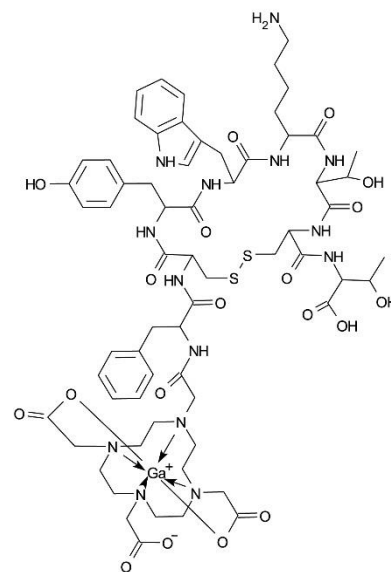
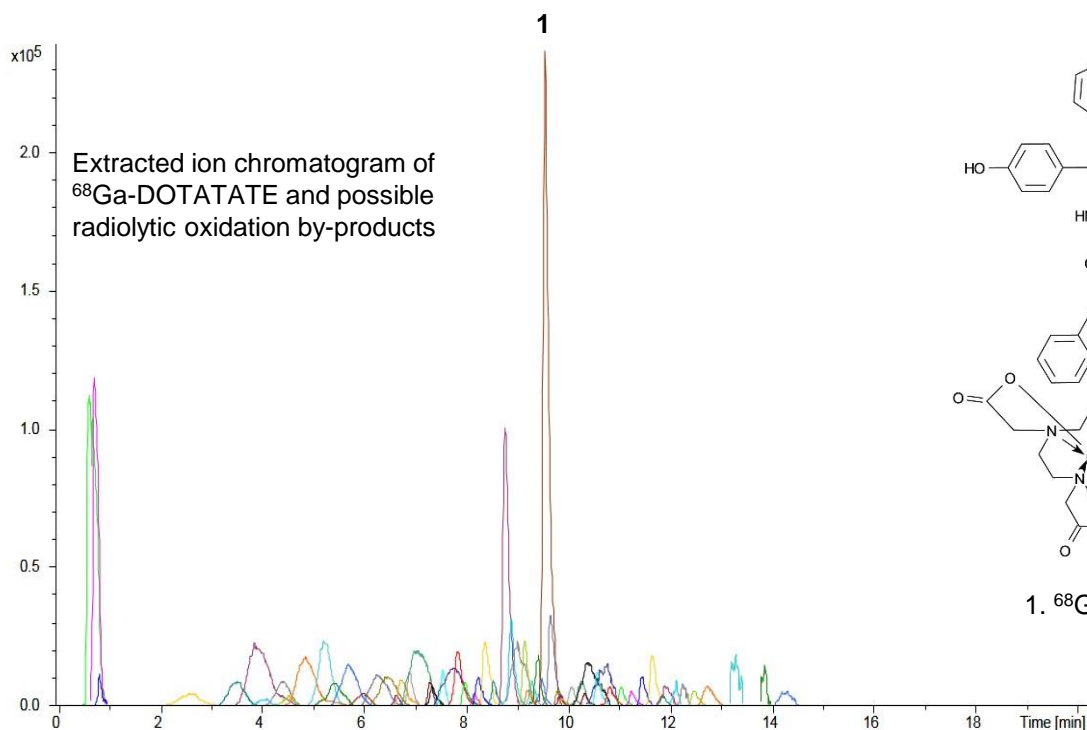


Conditions

Column: ACE 3 C18
Dimensions: 50 x 4.6 mm
Part Number: ACE-111-0546
Mobile Phase: A: 0.1% formic acid in H₂O
B: 0.1% formic acid in MeCN

Time (mins)	%B
0	2
10	25
20	25

Flow Rate: 1 mL/min
Injection: 10 µL
Detection: Bruker ESI-Q-TOF
ESI positive ion mode



1. ⁶⁸Ga-DOTATATE