

Application note # C-13066

Separation of Solvents using the Avantor[®] Hichrom HI-SOLVE 1 column

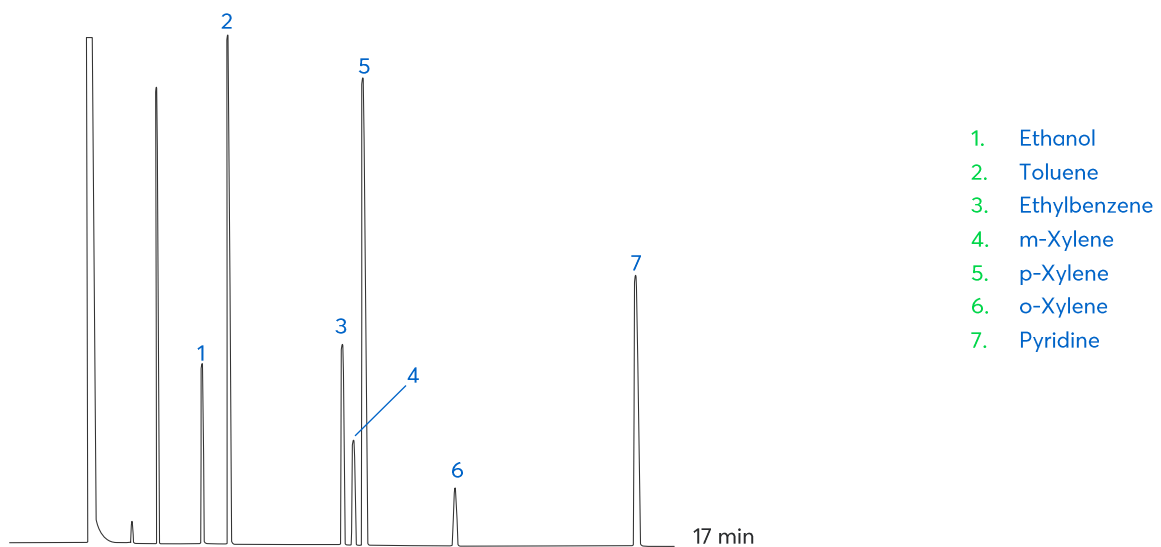


Figure 1: Separation of a solvent mixture using the Avantor[®] Hichrom HI-SOLVE 1 column.

Method Details

CONDITIONS

Oven Program:	35 °C (2 min), 1 °C/min, 60 °C
Carrier Gas:	Helium, 2.5 mL/min.
Injector:	Split, 200 °C, 0.5 µL 1:70 split ratio
Detector:	FID, 200 °C

The HI-SOLVE 1 is an application specific column with a proprietary stationary phase developed for the separation of complex solvent mixtures.

ORDERING TABLE

Product	Details	Dimensions	Part Number
Avantor® Hichrom HI-SOLVE 1	GC Column	0.32 mm, 0.25 µm, 50 m	HI62-32-025-50