

Paracetamol and Related Substances - Column Screening Approach

Application # AN4420

Page 1 of 2

Conditions

Column: ACE Excel 2 SuperC18; ACE Excel 2 C18-PFP; ACE Excel 2 C18-Amide; ACE Excel 2 CN-ES; ACE Excel 2 C18; ACE Excel 2 C18-AR

Dimensions: 100 x 3.0 mm

Part Number: EXL-1011-1003U; EXL-1010-1003U; EXL-1012-1003U; EXL-1013-1003U; EXL-101-1003U; EXL-109-1003U;

Mobile Phase: A: 20 mM ammonium acetate pH 6.0 in H₂O

B: 20 mM ammonium acetate pH 6.0 in MeOH/H₂O (90:10 v/v)

Time (mins)	%B
-------------	----

0.0	5
-----	---

10.0	95
------	----

12.5	95
------	----

13.0	5
------	---

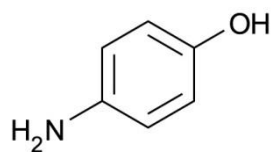
18.0	5
------	---

Flow Rate: 1.2 mL/min

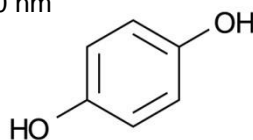
Injection: 2 µL

Temperature: 40 °C

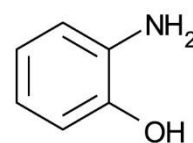
Detection: UV, 210 nm



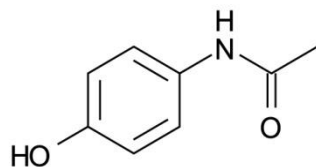
1. 4-Aminophenol



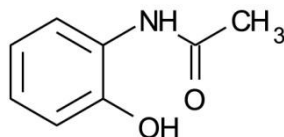
2. Hydroquinone



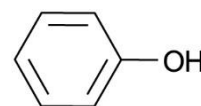
3. 2-Aminophenol



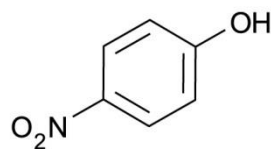
4. Paracetamol



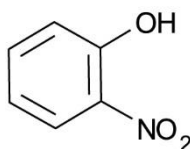
5. 2-Acetamidophenol



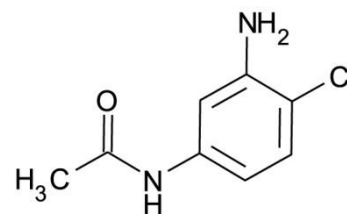
6. Phenol



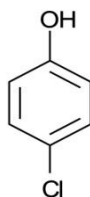
7. 4-Nitrophenol



8. 2-Nitrophenol



9. 4-Chloroacetanilide



10. 4-Chlorophenol

Paracetamol and Related Substances - Column Screening Approach

Application #AN4420
Page 2 of 2

