

Paracetamol and Related Substances – Fast Analysis (II)

ACE[®]
Ultra-inert
UHPLC & HPLC Columns

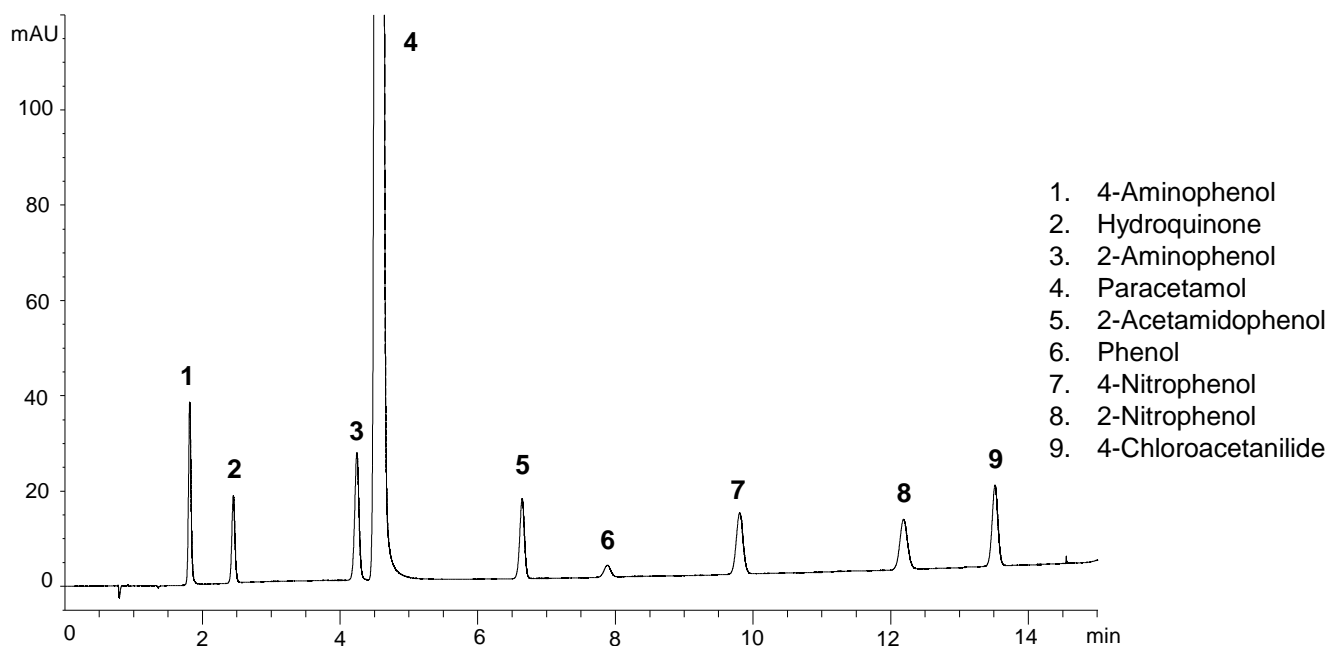
Application #AN2250

Conditions

Column: ACE Excel 1.7 SuperC18
Dimensions: 50 x 3.0 mm
Part Number: EXL-1711-0503U
Mobile Phase: A: 10 mM ammonium acetate pH 6.0 in H₂O
B: 10 mM ammonium acetate pH 6.0 in MeOH/H₂O (90:10 v/v)

Time (mins)	%B
0.0	5
13.62	60
15.32	60
15.66	5

Flow Rate: 0.43 mL/min
Injection: 0.73 µL
Temperature: 35 °C
Detection: UV, 230 nm



For enhanced resolution of paracetamol and related compounds, see AN2220.

© 2015 ACT Ltd. All rights reserved. All products are available worldwide.

For more information contact your local ACE distributor or visit
www.ace-hplc.com or email: info@ace-hplc.com


ACE[®]
UHPLC & HPLC
Columns