

# Separation of Acrylamide, Methacrylamide and Methacrylic Acid

**ACE**<sup>®</sup>  
Ultra-inert  
UHPLC & HPLC Columns

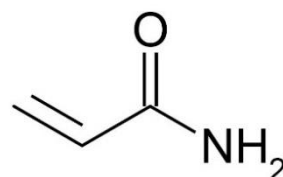
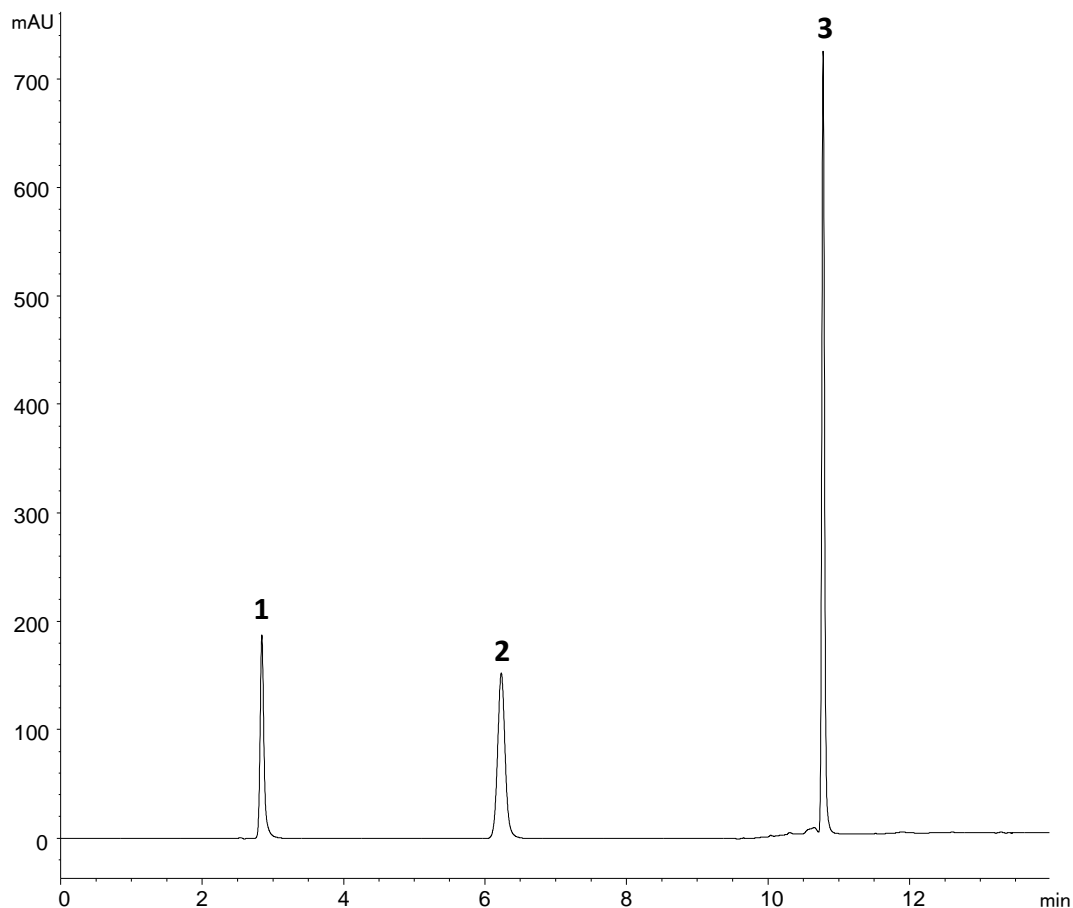
Application #AN6740

## Conditions

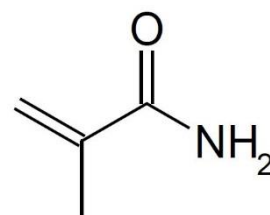
Column: ACE Excel 3 SuperC18  
Dimensions: 150 x 4.6 mm  
Part Number: EXL-1111-1546U  
Mobile Phase: A: 0.05 % phosphoric acid in 97:3 H<sub>2</sub>O/MeCN  
B: 0.05 % phosphoric acid in MeCN

Time (mins)	%B
0	0
3	0
15	100
20	100
21	0
35	0

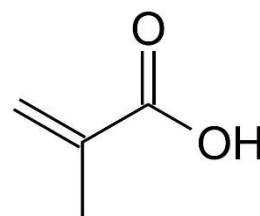
Flow Rate: 1.0 mL/min  
Injection: 5 µL  
Temperature: 25 °C  
Detection: UV, 210 nm



1. Acrylamide



2. Methacrylamide



3. Methacrylic acid

© 2018 ACT Ltd. All rights reserved. All products are available worldwide.

For more information contact your local ACE distributor or visit  
[www.ace-hplc.com](http://www.ace-hplc.com) or email: [info@ace-hplc.com](mailto:info@ace-hplc.com)

  
**ACE**<sup>®</sup>  
UHPLC & HPLC  
Columns