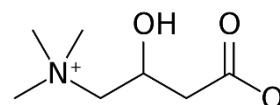
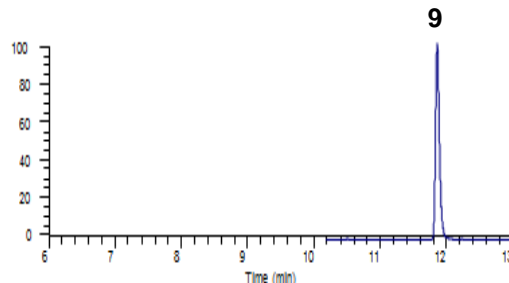
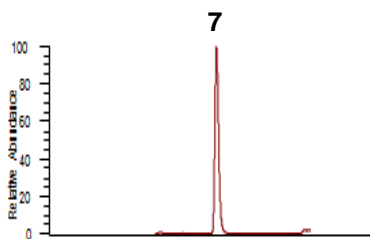
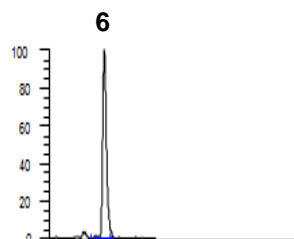
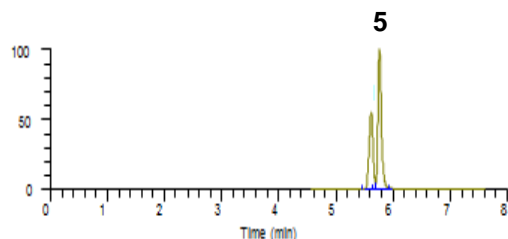
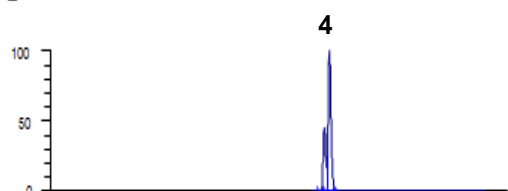
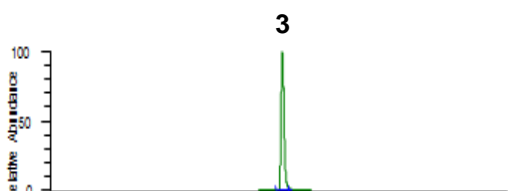
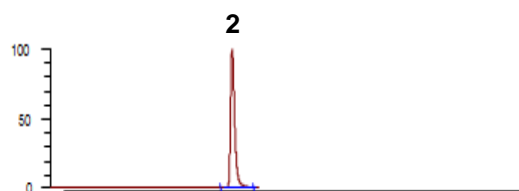


## Conditions

Column: ACE Excel 2 C18-PFP  
Dimensions: 100 x 2.1 mm  
Part Number: EXL-1010-1002U  
Mobile Phase: A: 0.1% formic acid in H<sub>2</sub>O  
B: 0.1% formic acid in MeOH

Time (mins)	%B
0.0	0.5
0.5	0.5
9.0	90.0
13.0	90.0

Flow Rate: 0.3 mL/min  
Sample: Dried serum extract  
Detection: Positive mode ESI



1. Carnitine  
(*m/z* 162.16 → 85.25-85.35)
2. Acetylcarnitine  
(*m/z* 204.13 → 85.25-85.35)
3. Propionylcarnitine  
(*m/z* 218.13 → 85.25-85.35)
4. Butyrylcarnitine & Isobutyrylcarnitine  
(*m/z* 232.15 → 85.25-85.35)
5. Isovalerylcarnitine & 2-Methylbutyrylcarnitine  
(*m/z* 246.20 → 85.25-85.35)
6. Hexanoylcarnitine  
(*m/z* 260.20 → 85.25-85.35)
7. Octanoylcarnitine  
(*m/z* 288.20 → 85.25-85.35)
8. Myristoylcarnitine  
(*m/z* 372.30 → 85.25-85.35)
9. Palmitoylcarnitine  
(*m/z* 400.30 → 85.25-85.35)

Reproduced with permission of Department of Pathology, Immunology and Laboratory Medicine, University of Florida, USA

© 2015 ACT Ltd. All rights reserved. All products are available worldwide.

For more information contact your local ACE distributor or visit  
[www.ace-hplc.com](http://www.ace-hplc.com) or email: [info@ace-hplc.com](mailto:info@ace-hplc.com)