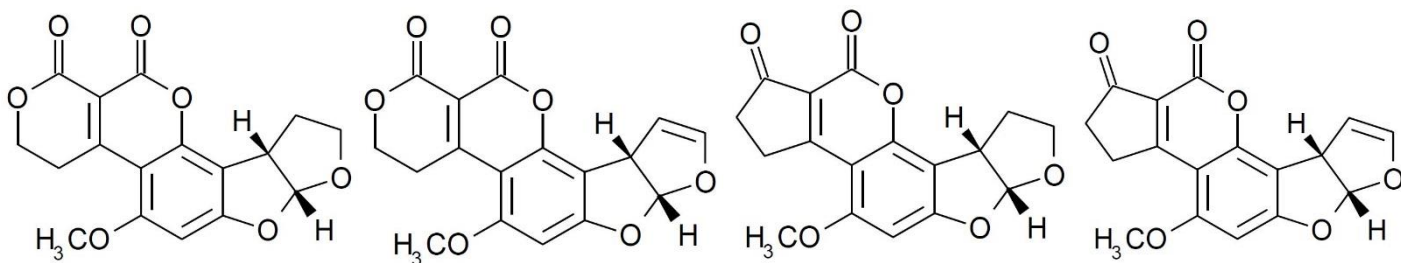


# Determination of Aflatoxins using Fluorescence Detection

Application #AN6530

## Conditions

Columns:	ACE Excel 5 C18
Dimensions:	250 x 4.6 mm
Part Numbers:	EXL-121-2546U
Mobile Phase:	MeOH/MeCN/H <sub>2</sub> O (30:10:60 v/v/v)
Flow Rate:	1.0 mL/min
Injection:	25 µL
Temperature:	35 °C
Detection:	Fluorescence, $\lambda_{\text{ex}}$ = 360 nm, $\lambda_{\text{em}}$ = 450 nm
Method:	ChP. 2015, Vol. 4



1. Aflatoxin G2

2. Aflatoxin G1

3. Aflatoxin B2

4. Aflatoxin B1

