

Application note # C-12983

Separation of Alcohols using an Avantor[®] Hichrom HI-PS255 GC Column

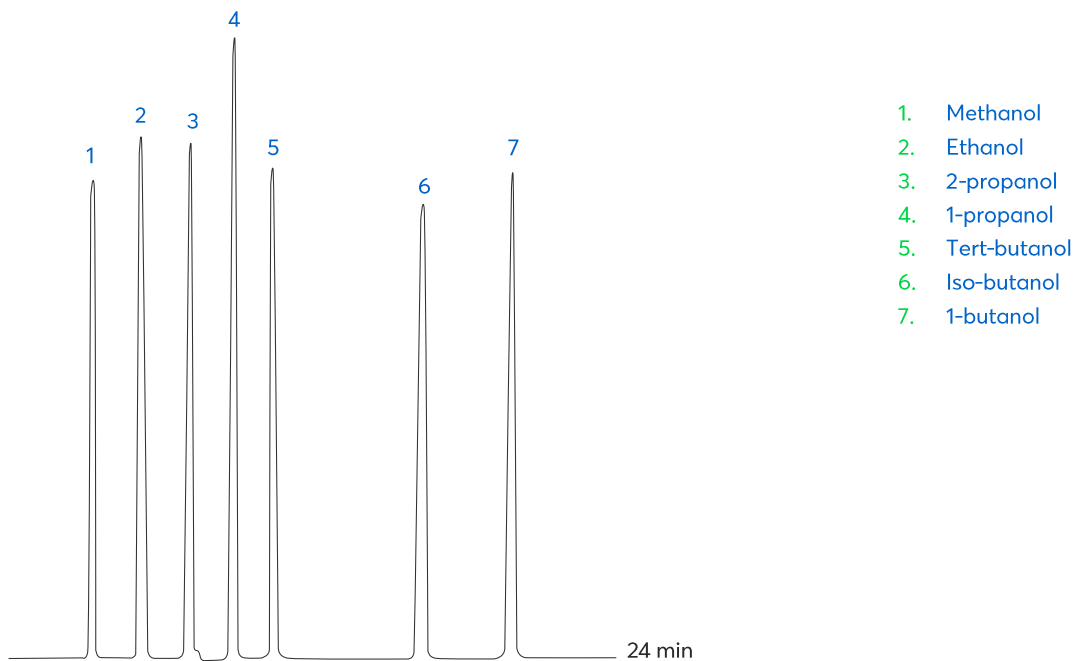


Figure 1: Separation of 7 alcohols using the Avantor[®] Hichrom HI-PS255 phase.

Method Details

CONDITIONS

Oven Program:	50 °C, 3 °C/min, 120 °C
Carrier Gas:	Nitrogen, 0.4 mL/min
Injector:	Split 250 °C, 1:50 Split Ratio
Detector:	FID 250 °C

The HI-PS255 is a non-polar GC phase with a 1% vinyl, 99% methyl polysiloxane composition. Suitable for high film thickness columns. It is well suited for the analysis of solvents, alcohols and volatiles.

ORDERING TABLE

Product	Details	Dimensions	Part Number
Avantor® Hichrom HI-PS255	GC Column	0.32 mm, 3.00 µm, 30 m	HI58-32-300-30