



Aldehydes

- Shimadzu LC-20A
- Shimpack VP-ODS
250x4.6mm 5um

- A: 20% THF
- B: ACN

Time	%B
0	40
6	40
8	75
15	75
30	60

- 1.0ml/min
- 40oC
- 360nm

- Shimadzu Nexera
- Shimpack VP-ODS
250x4.6mm 5um

- A: Water/THF/MeOH 7/2/1
- B: Water/ACN 4/6

Time	%B
0	50
0.5	50
4	90
5	50

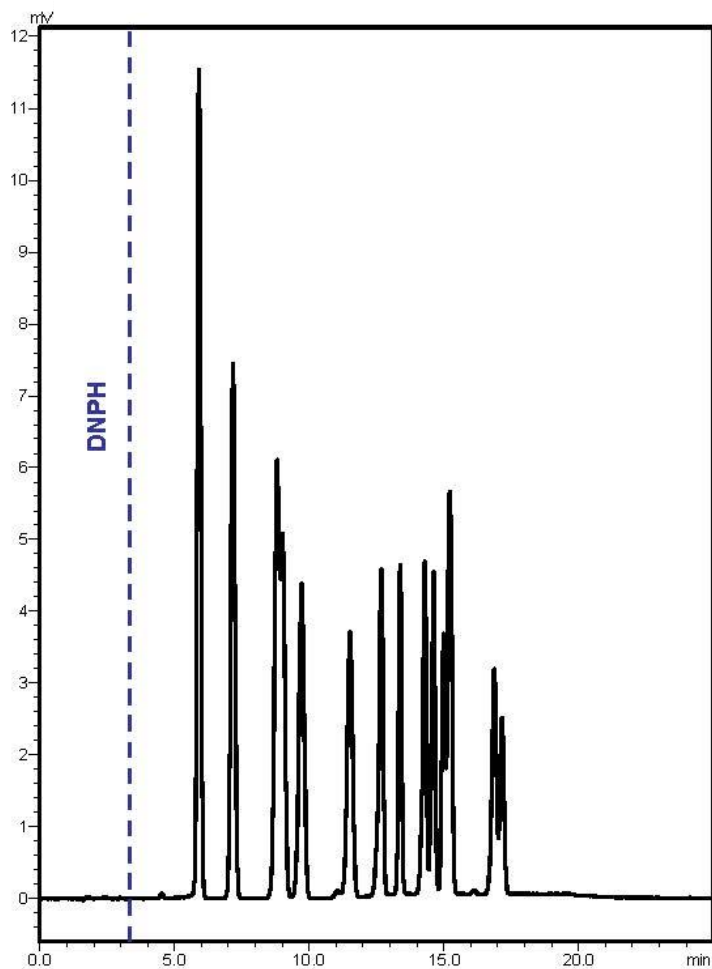
- 0.4ml/min
- 50oC
- 360nm

- 1) Formaldehyde
- 2) Acetaldehyde
- 3) Acetone
- 4) Acrolein
- 5) Propionaldehyde
- 6) Crotonaldehyde
- 7) Butyraldehyde
- 8) Benzaldehyde
- 9) Isovaleraldehyde
- 10) Valeraldehyde
- 11) o-Tolualdehyde
- 12) m,p-Tolualdehyde
- 13) Hexaaldehyde
- 14) 2,5-Dimethylbenzaldehyde



Aldehydes

Shimpack VP-ODS 250x4.6mm 5um



1.7um Fortis C18 50x2.1mm

