

Separation of Amines using the Avantor[®] Hichrom HI-PS255 Phase

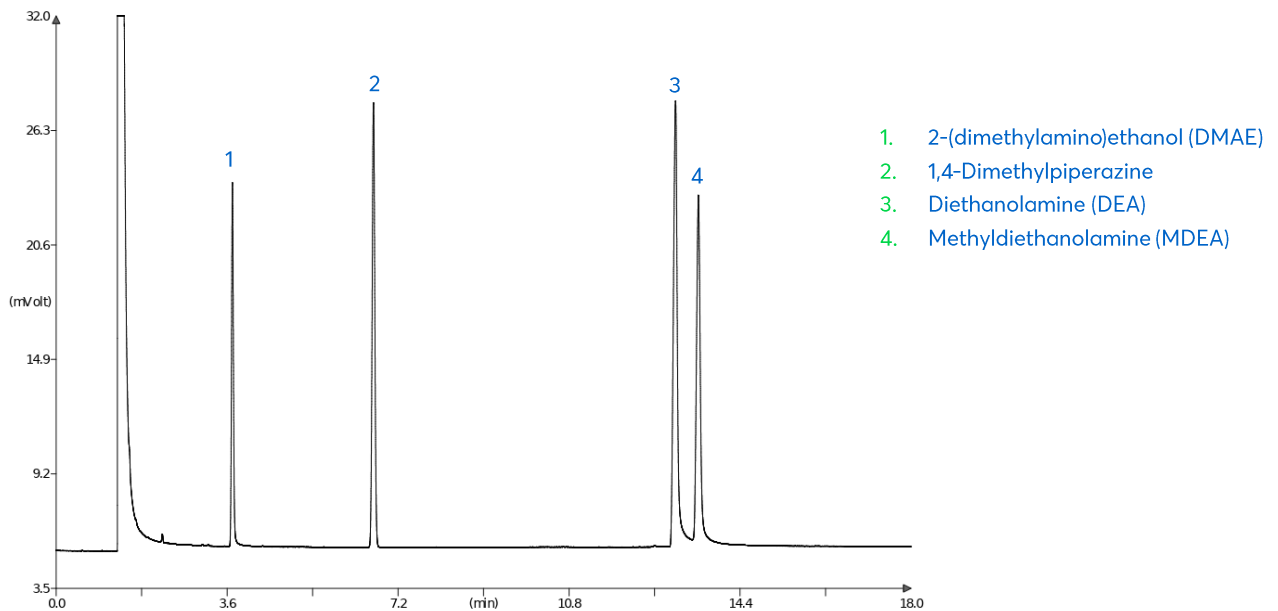


Figure 1: Separation of amines using the Avantor[®] Hichrom HI-PS255 phase.

Method Details

CONDITIONS

Oven Program:	100 °C, 2.5 °C/min, 200 °C
Carrier Gas:	Hydrogen, 80 kPa
Injector:	Split, 250 °C
Detector:	FID, 300 °C

The HI-PS255 is a non-polar GC phase with a 1% vinyl, 99% methyl polysiloxane composition. Suitable for high film thickness columns. It is well suited for the analysis of solvents, alcohols and volatiles.

ORDERING TABLE

Product	Details	Dimensions	Part Number
Avantor® Hichrom HI-PS255	GC Column	0.25 mm, 3.00 µm, 30 m	HI58-25-300-30