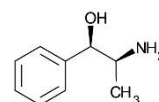
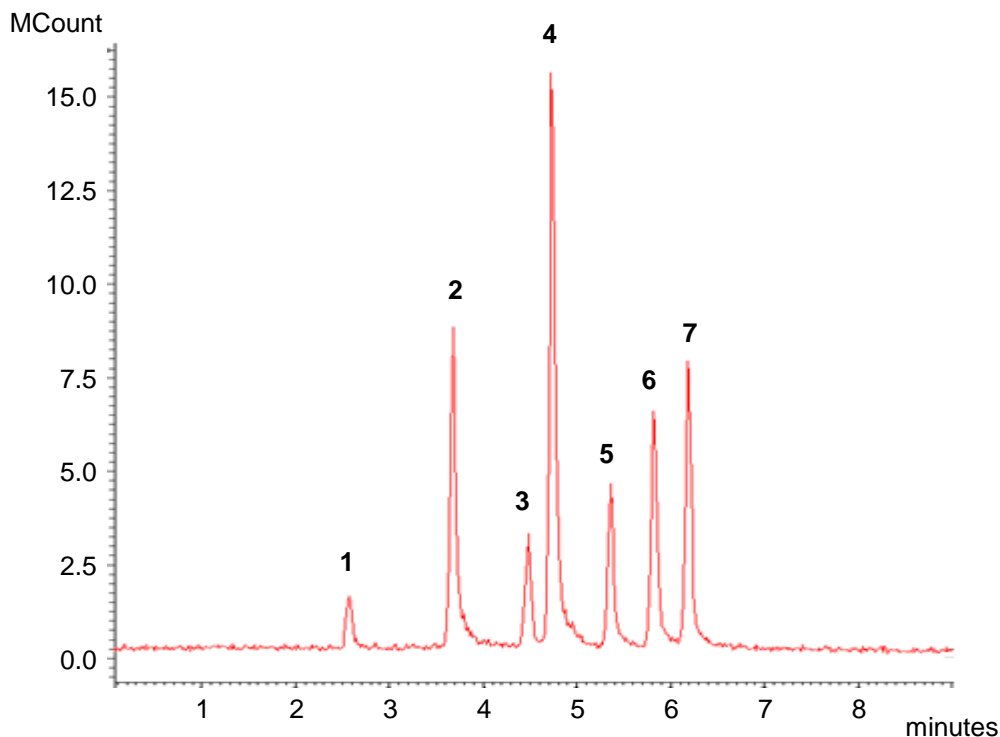


## Conditions

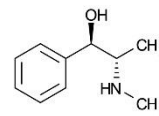
Column: ACE Excel 3 SuperC18  
Dimensions: 75 x 2.1 mm  
Part Number: EXL-1111-7502U  
Mobile Phase: A: 5 mM ammonium hydroxide pH 10.8 in H<sub>2</sub>O  
B: 5 mM ammonium hydroxide pH 10.8 in MeOH/H<sub>2</sub>O (90:10 v/v)

Time (mins)	%B
0	30
8	95

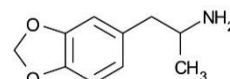
Flow Rate: 0.6 mL/min  
Injection: 2 µL  
Temperature: 60 °C  
Detection: Varian 320 Triple Quadrupole MS  
Electrospray voltage: +5 kV  
Inlet capillary voltage: 30 V  
CID with argon at 1.5 mTorr  
Collision cell potential ranges from 5 to 17 V  
Drying gas (nitrogen) temperature: 325 °C  
Nebulizing gas (nitrogen) pressure: 35 psi  
Extended Dynamic Range



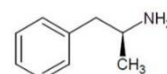
1. Phenylpropanolamine  
LOD (est) 4 ppb  
(*m/z* 151.6 → 134.0)



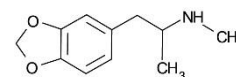
2. (l)-Ephedrine  
LOD (est) 2 ppb  
(*m/z* 166.2 → 148.0)



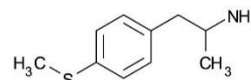
3. (dl)-3,4-MDA  
LOD (est) 30 ppb  
(*m/z* 179.7 → 163.0)



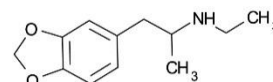
4. (d)-Amphetamine  
LOD (est) 4 ppb  
(*m/z* 135.8 → 90.9)



5. (dl)-3,4-MDMA  
LOD (est) 2 ppb  
(*m/z* 193.7 → 163.0)



6. 4-Methylthioamphetamine  
LOD (est) 10 ppb  
(*m/z* 182.2 → 165.0)



7. (±)-MDEA  
LOD (est) 1 ppb  
(*m/z* 207.7 → 165.0)