

Analysis of Eleutherococcus Senticosus Root Extract (Siberian Ginseng) in Traditional Chinese Herbal Medicine

ACE[®]
Ultra-inert
UHPLC & HPLC Columns

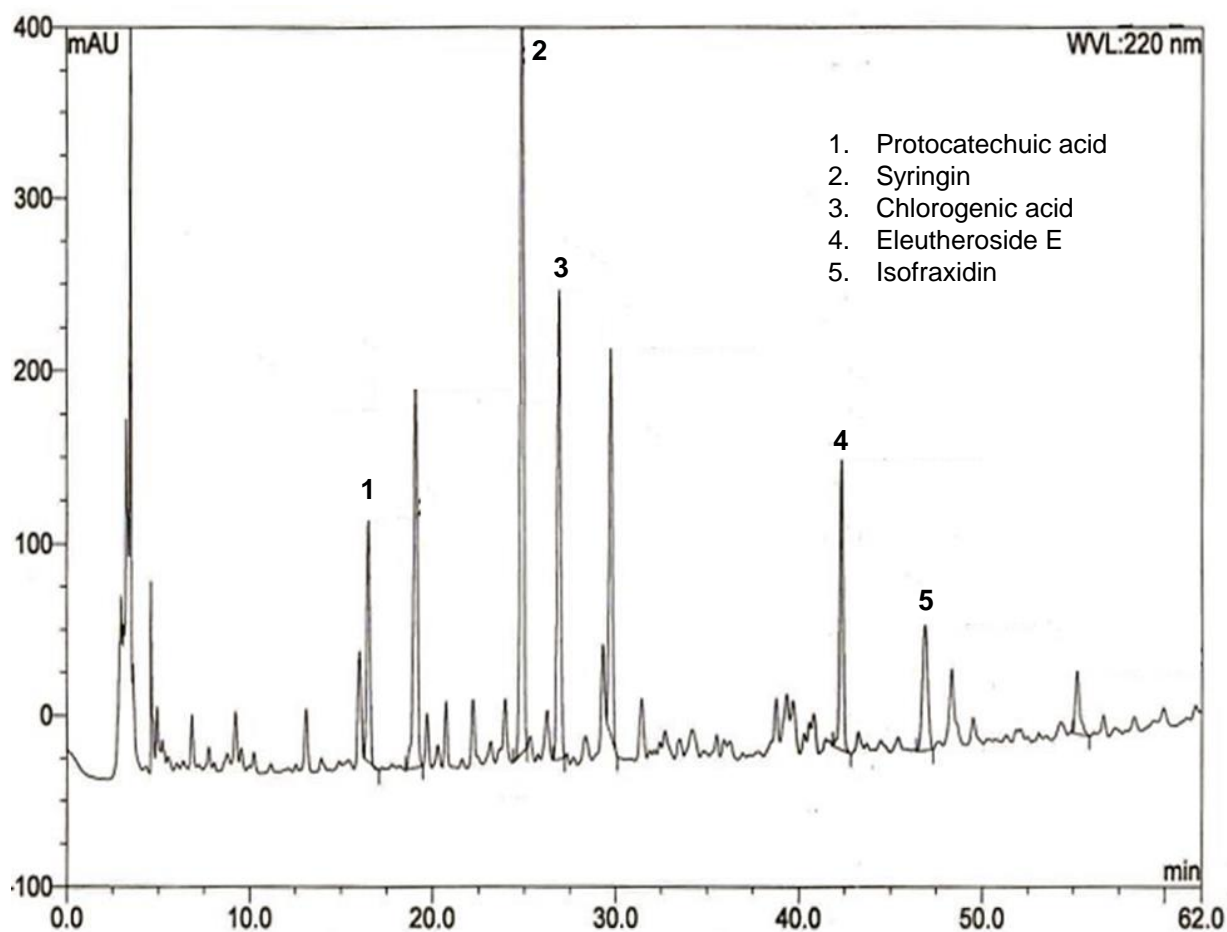
Application #AN6580

Conditions

Columns: ACE Excel 5 C18
Dimensions: 250 x 4.6 mm
Part Numbers: EXL-121-2546U
Mobile Phase: A: 0.2 % H₃PO₄ (aq)
B: MeCN/H₂O (30:70 v/v)

| Time (mins) | %B |
|-------------|----|
| 0 | 15 |
| 3 | 18 |
| 50 | 69 |
| 60 | 80 |

Flow Rate: 0.8 mL/min
Injection: 10 µL
Temperature: 20 °C
Detection: UV, 220 nm
Method: ChP. 2015, Vol. 1



© 2018 ACT Ltd. All rights reserved. All products are available worldwide.

For more information contact your local ACE distributor or visit
www.ace-hplc.com or email: info@ace-hplc.com


ACE[®]
UHPLC & HPLC
Columns