

Application note # C-13099

Analysis of Ethylene in Air using the Avantor[®] Hichrom HI-PS264 Phase

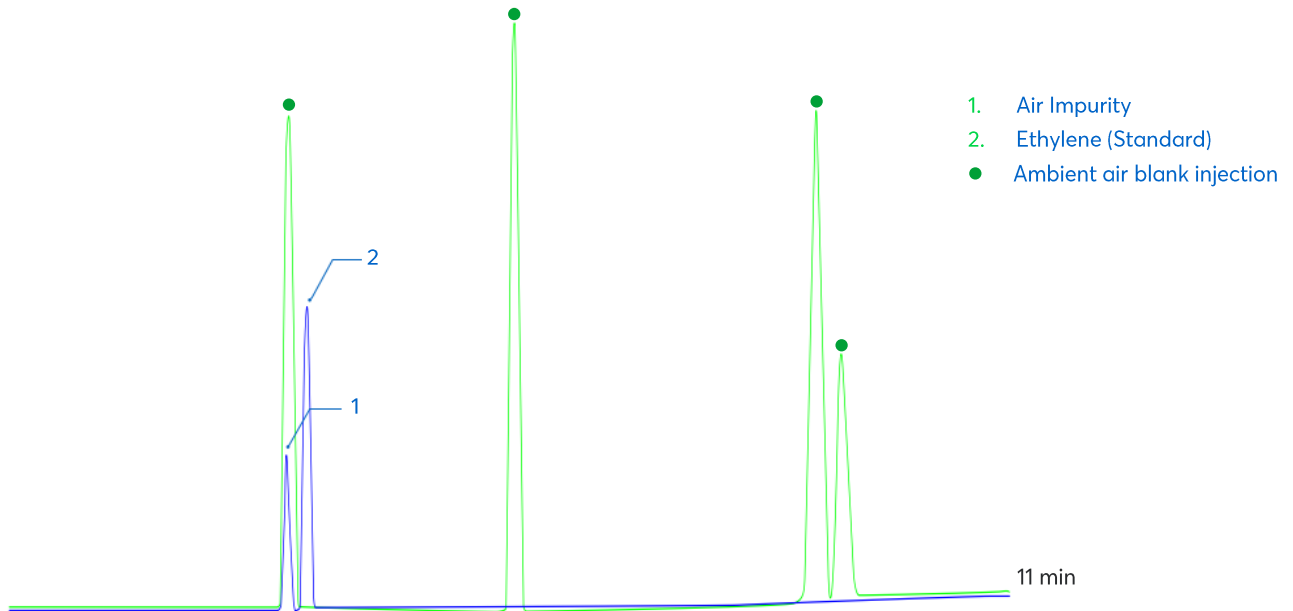


Figure 1: Analysis of ethylene in air using the Avantor[®] Hichrom HI-PS264 column.

Method Details

CONDITIONS

| | |
|---------------|--|
| Oven Program: | 40 °C (4 min), 10 °C/min |
| Carrier Gas: | Helium, 100 kPa |
| Injector: | Split 250 °C, 1 mL injection volume with a Gas Syringe, 25 mL/min split flow |
| Detector: | FID, 250 °C |

The HI-PS264 is a low polarity GC phase with a 5.8% Phenyl, 0.2% Vinyl, 94% Methyl Polysiloxane composition. Suitable for high film thickness columns. It is well suited for the analysis of solvents, alcohols and volatiles.

ORDERING TABLE

| Product | Details | Dimensions | Part Number |
|---------------------------|-----------|------------------------|----------------|
| Avantor® Hichrom HI-PS264 | GC Column | 0.32 mm, 5.00 µm, 30 m | HI59-32-500-30 |