

# Analysis of Phthalates

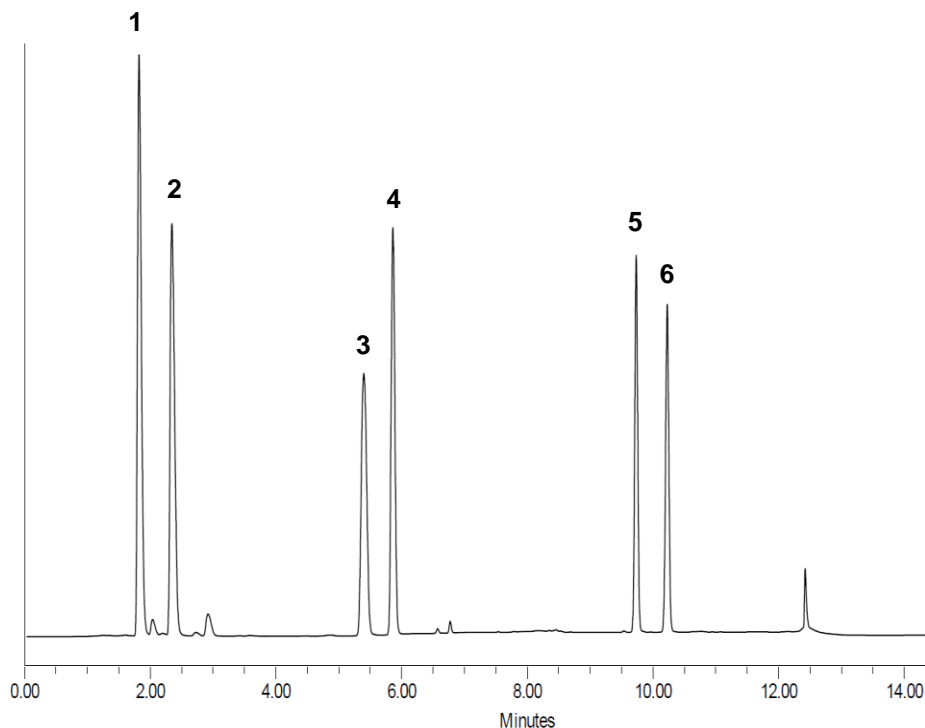
## Conditions

Column: ACE UltraCore 2.5 SuperC18  
Dimensions: 150 x 4.6 mm  
Part Number: CORE-25A-1546U  
Mobile Phase: A: Water  
B: Acetonitrile

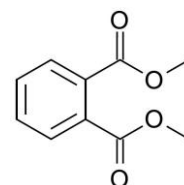
Time (mins)	%B
0	70
3.0	70
5.0	100
10.0	100
11.0	70
16.0	70

Flow Rate: 1.0 mL/min  
Injection: 20 µL  
Temperature: 40 °C  
Detection: UV, 230 nm  
Standard Concentration: 20 mg/L in MeCN

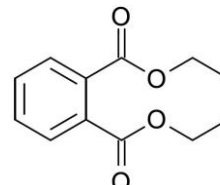
Solvents: Acetonitrile, J.T.Baker, P/N: 9017-88  
Water, J.T.Baker, P/N: 4218-88



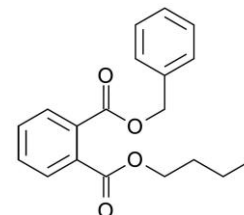
## Application #AN6990



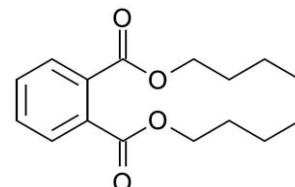
1. Dimethyl phthalate (DMP)



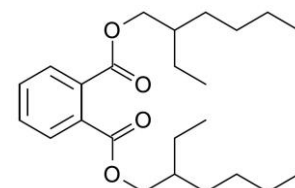
2. Diethyl phthalate (DEP)



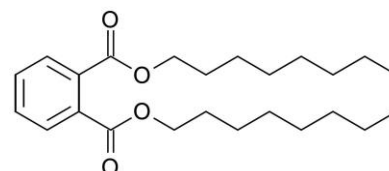
3. Benzyl butyl phthalate (BBP)



4. Di-n-butyl phthalate (DBP)



5. Bis(2-ethylhexyl) phthalate (DEHP)



6. Di-n-octyl phthalate (DNOP)

Reproduced with permission of Avantor Korea Application Lab

© 2019 ACT Ltd. All rights reserved. All products are available worldwide.

For more information contact your local ACE distributor or visit  
[www.ace-hplc.com](http://www.ace-hplc.com) or email: [info@ace-hplc.com](mailto:info@ace-hplc.com)