

# Analysis of Polyoxin B in Tobacco Leaves and Soil Extracts

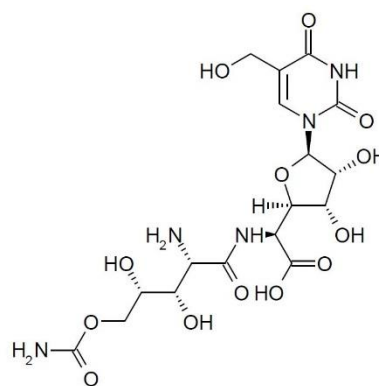
Application #AN6510

## Conditions

Column: ACE Excel 5 SuperC18  
Dimensions: 250 x 4.6 mm  
Part Number: EXL-1211-2546U  
Mobile Phase: A: Phosphoric acid pH 4.0 (aq)  
B: MeOH

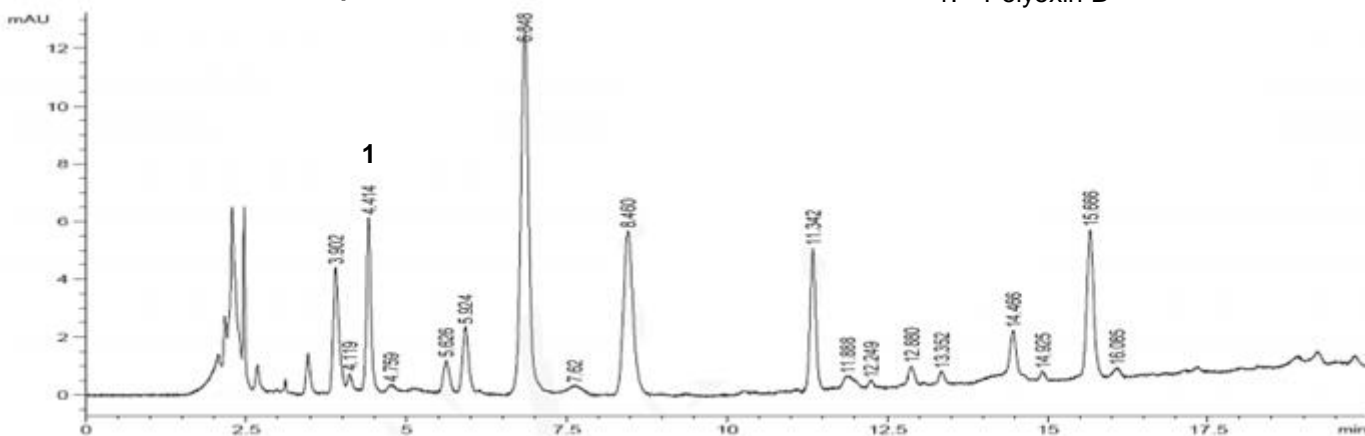
Time (mins)	%B
0	5
5	5
20	45

Flow Rate: 1.0 mL/min  
Injection: 10 µL  
Temperature: Ambient  
Detection: UV, 262 nm



1. Polyoxin B

## Tobacco leaves sample



## Soil sample

