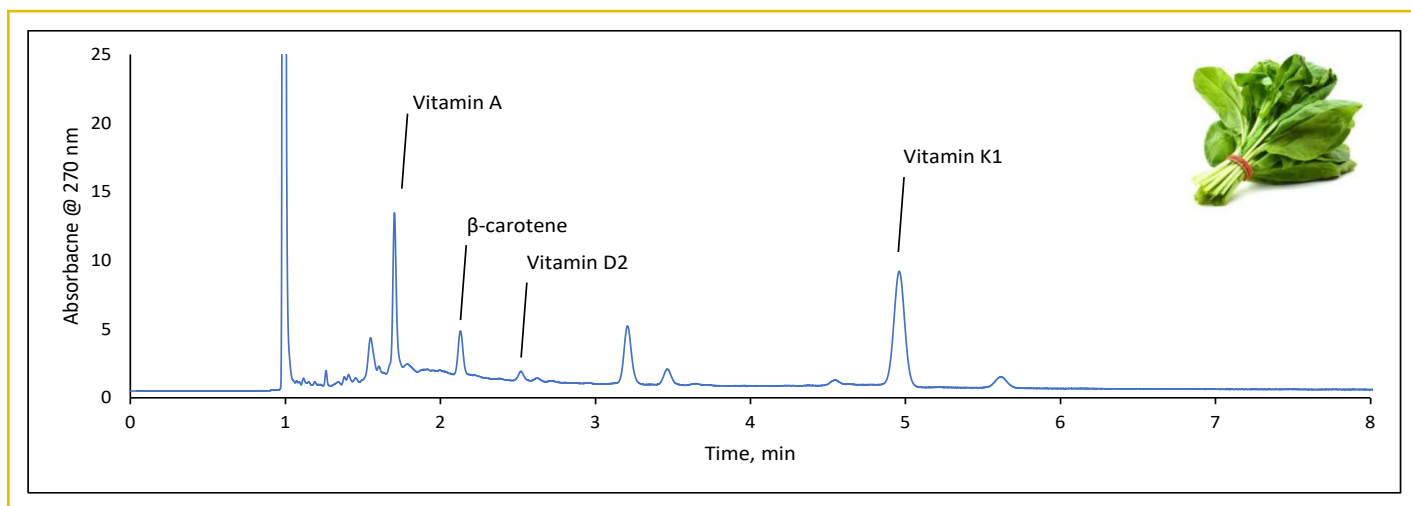




## Analysis of Spinach

223-V



### TEST CONDITIONS:

**Column:** HALO 160 Å C30, 2.7  $\mu$ m, 4.6 x 150 mm

**Part Number:** 92114-730

**Mobile Phase:** Methanol

**Flow Rate:** 1.5 mL/min

**Pressure:**

**Temperature:** 30 °C

**Detection:** UV 270 nm

**Injection Volume:** 1.0  $\mu$ L

**Sample Solvent:** Hexane

**Response Time:** 0.025 sec

**Flow Cell:** 1  $\mu$ L

**LC System:** Shimadzu Nexera X2

### PEAK IDENTITIES:

1. Retinyl acetate (Vitamin A)
2.  $\beta$ -carotene
3. Ergocalciferol (Vitamin D2)
4. 2, 3 - trans-phyloquinone (Vitamin K1)

Spinach is common leafy green vegetable found all over the world and is one of the most nutritious to consume. A sample of spinach is dissolved in hexane and analyzed using a HALO® C30 column. Several fat soluble vitamins are found in the sample using isocratic HPLC conditions.

