

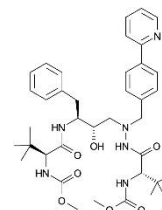
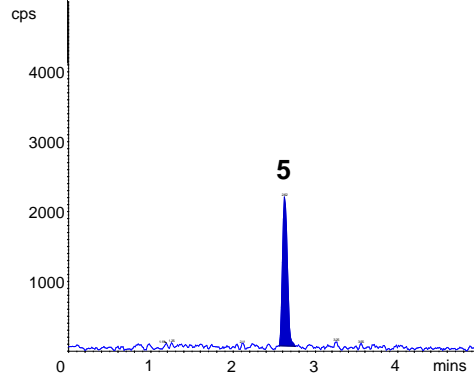
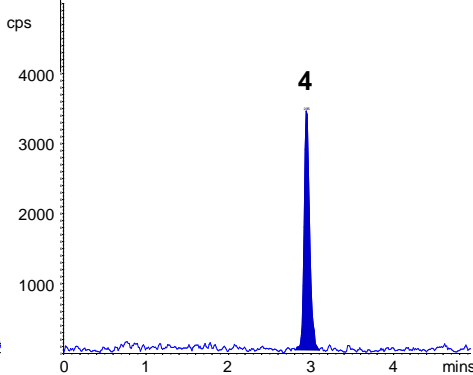
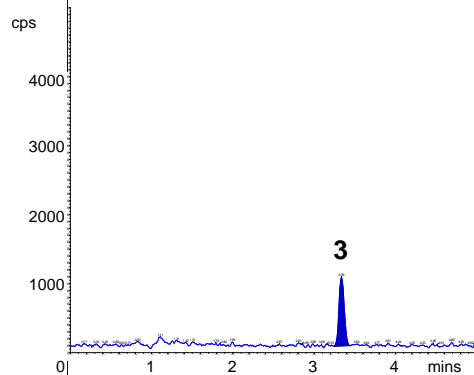
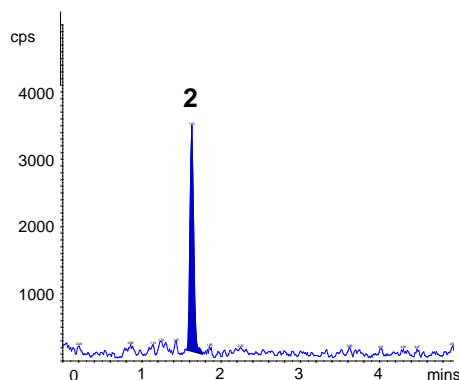
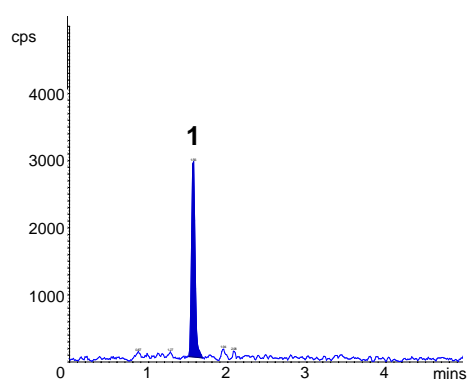
Antiretrovirals in Human Mononuclear Cell Extracts by LC-MS/MS

ACE[®]
Ultra-inert
UHPLC & HPLC Columns

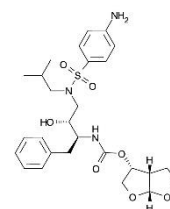
Application #AN3470

Conditions

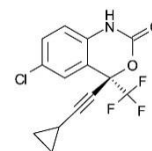
Column: ACE 3 C18
Dimensions: 100 x 3.0 mm
Part Number: ACE-111-1003
Mobile Phase: MeCN/H₂O/formic acid (60:40:0.1 v/v/v)
Flow Rate: 0.5 mL/min
Injection: 40 µL
Temperature: 40 °C
Detection: SCIEX API 6500 triple quad MS
Positive ion mode ESI (negative mode for efavirenz)
Ion spray voltage: +5500 V (-4500 V for efavirenz)
Temperature: 450 °C (650 °C for efavirenz)



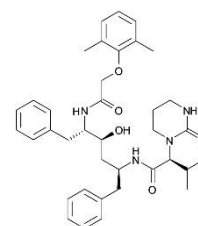
1. Atazanavir
(*m/z* 705.4 → 168.2)
LLOQ: 0.04 fmol/sample



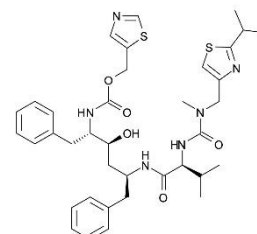
2. Darunavir
(*m/z* 548.3 → 392.3)
LLOQ: 1.0 fmol/sample



3. Efavirenz
(*m/z* 313.9 → 244.0)
LLOQ: 4.0 fmol/sample



4. Lopinavir
(*m/z* 629.4 → 447.3)
LLOQ: 1.0 fmol/sample



5. Ritonavir
(*m/z* 721.4 → 268.2)
LLOQ: 1.0 fmol/sample

Reproduced with permission of Antiviral Pharmacology Laboratory, College of Pharmacy, University of Nebraska Medical Centre, Nebraska, USA

© 2015 ACT Ltd. All rights reserved. All products are available worldwide.

For more information contact your local ACE distributor or visit
www.ace-hplc.com or email: info@ace-hplc.com


ACE[®]
UHPLC & HPLC
Columns