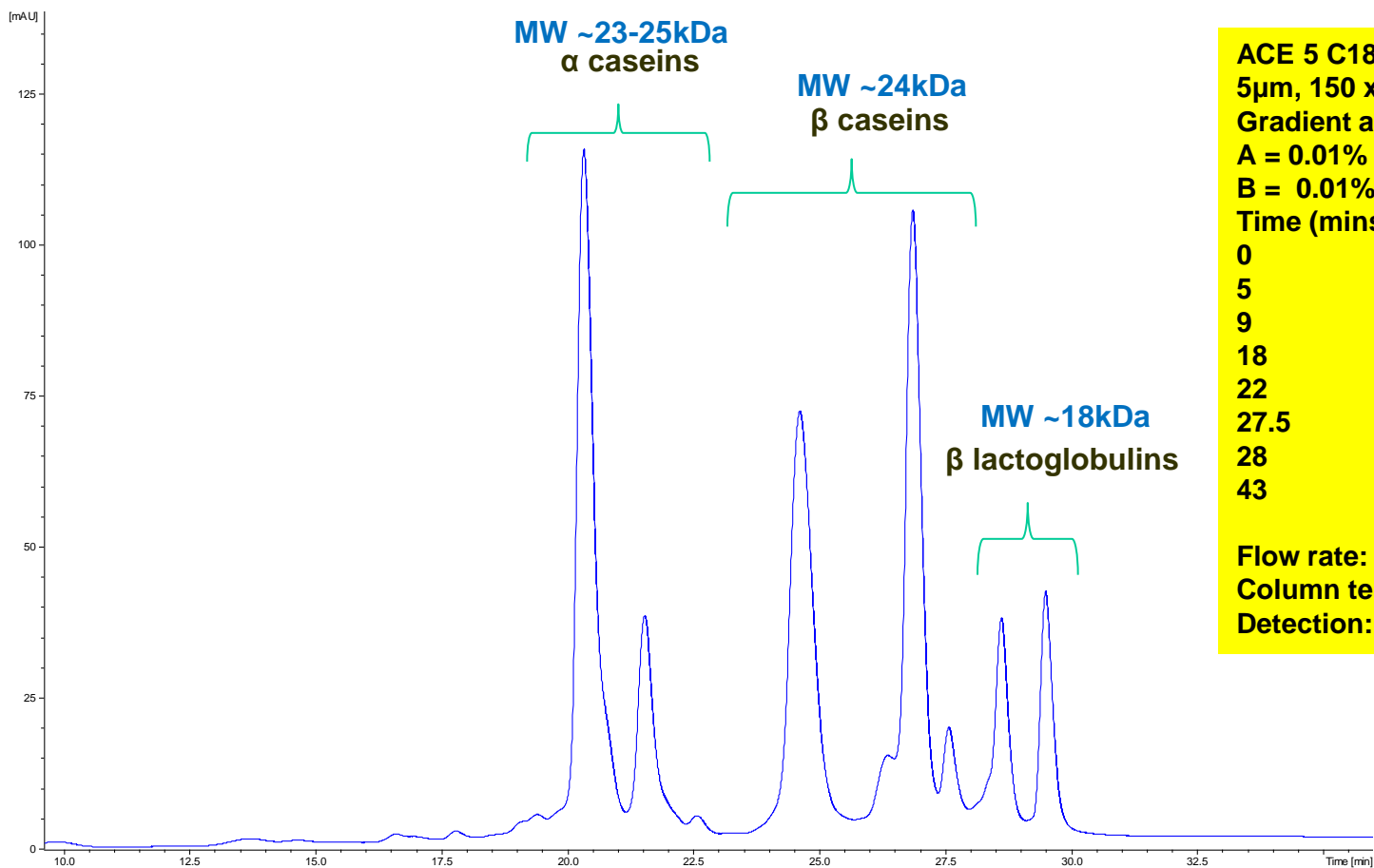


# Separation of Milk Proteins



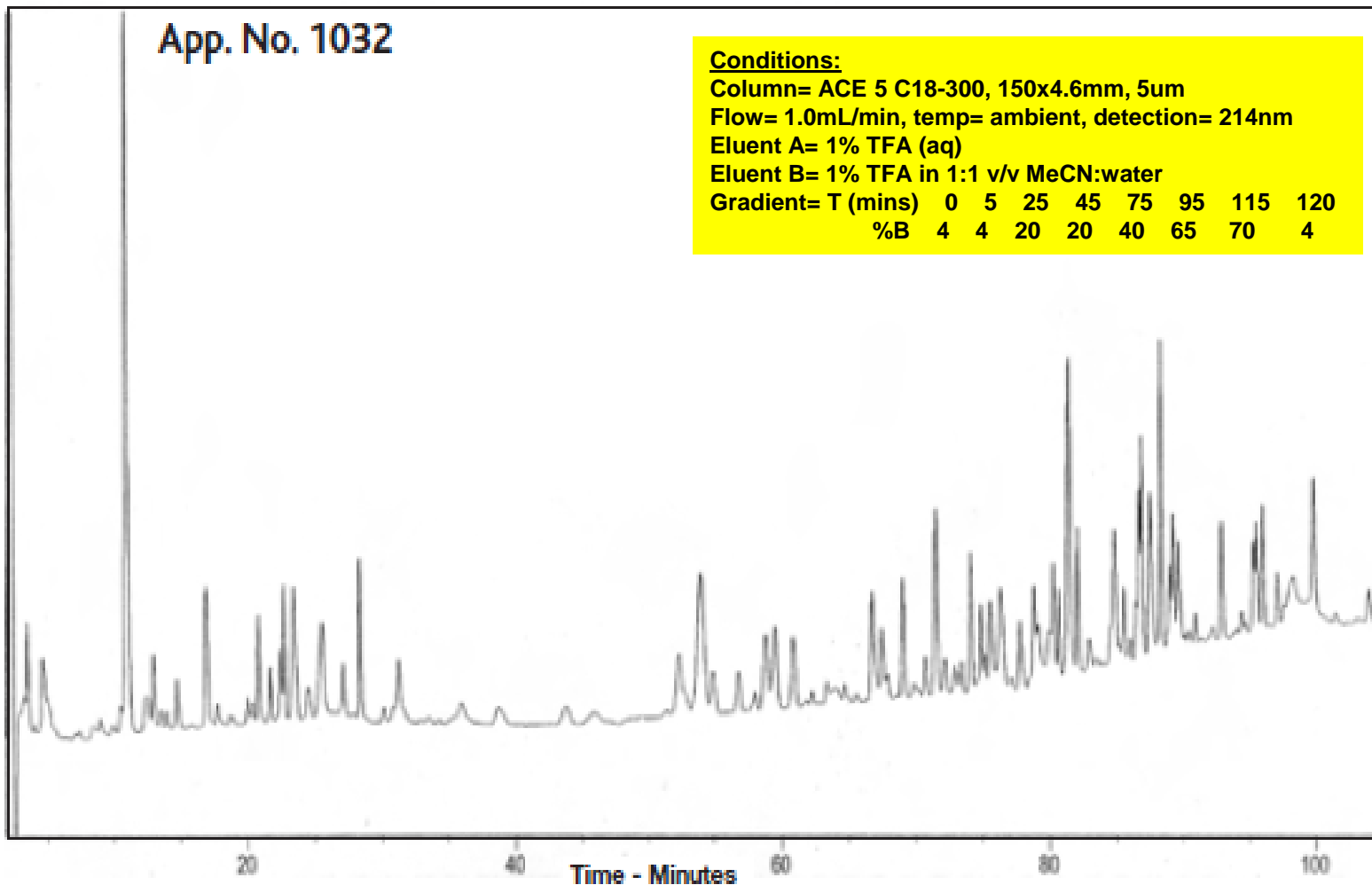
**ACE 5 C18-300**  
**5 $\mu$ m, 150 x 2.1mm**  
**Gradient analysis**  
**A = 0.01% TFA in water**  
**B = 0.01% TFA in acetonitrile**

Time (mins)	%B
0	33
5	33
9	35
18	37
22	40
27.5	41
28	41
43	43

**Flow rate: 0.2ml/min**  
**Column temperature: 45°C**  
**Detection: UV, 214nm**

# Digest Profiling

## BSA Tryptic Digest Profiling



# Angiotensin Peptides

## 300Å Pore Size Products: Peptide analysis

