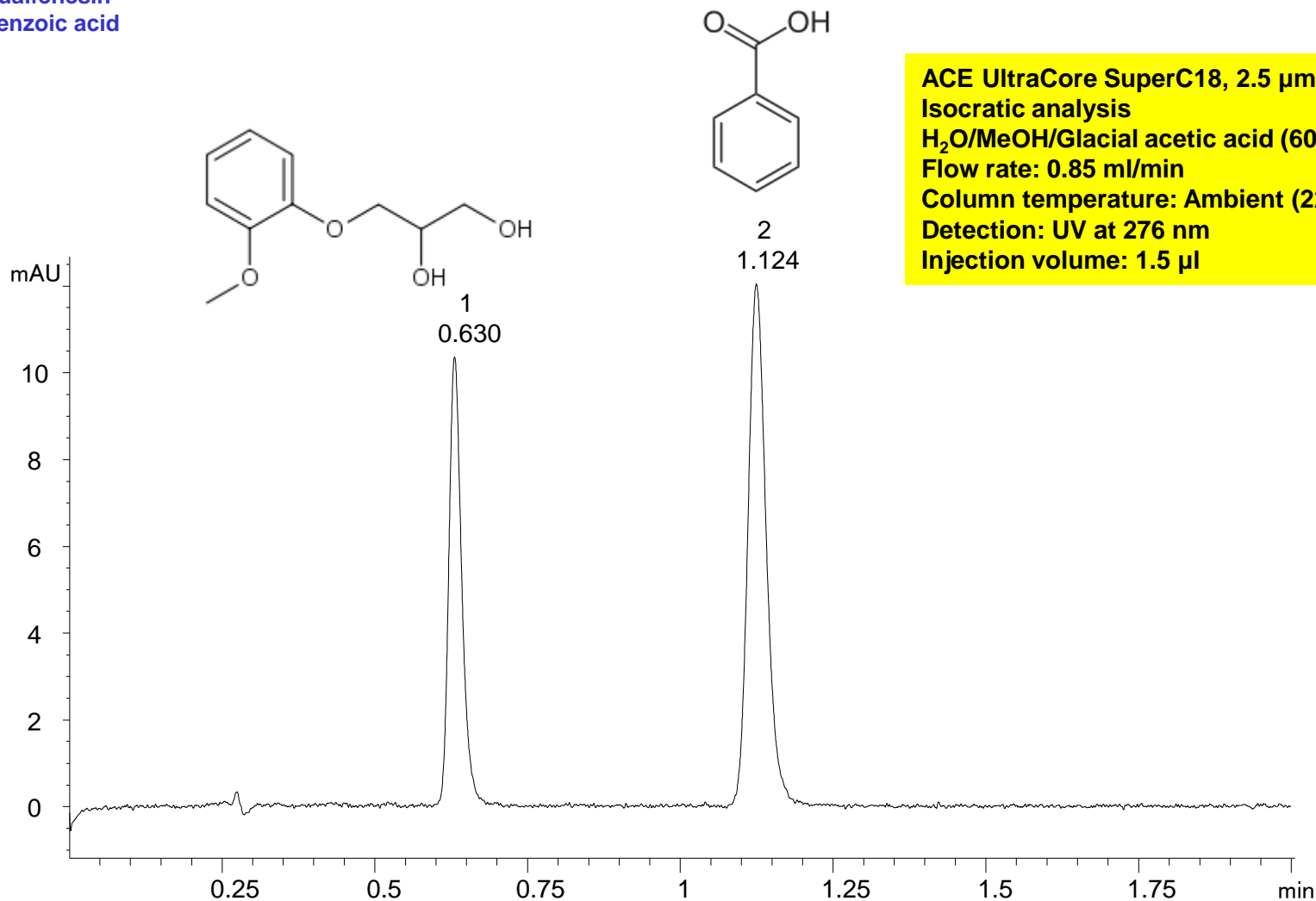


USP Guaifenesin

Key:

- 1 Guaifenesin
- 2 Benzoic acid



ACE UltraCore SuperC18, 2.5 µm, 50 x 3.0 mm
Isocratic analysis
H₂O/MeOH/Glacial acetic acid (60:40:1.5 v/v)
Flow rate: 0.85 ml/min
Column temperature: Ambient (22°C)
Detection: UV at 276 nm
Injection volume: 1.5 µl

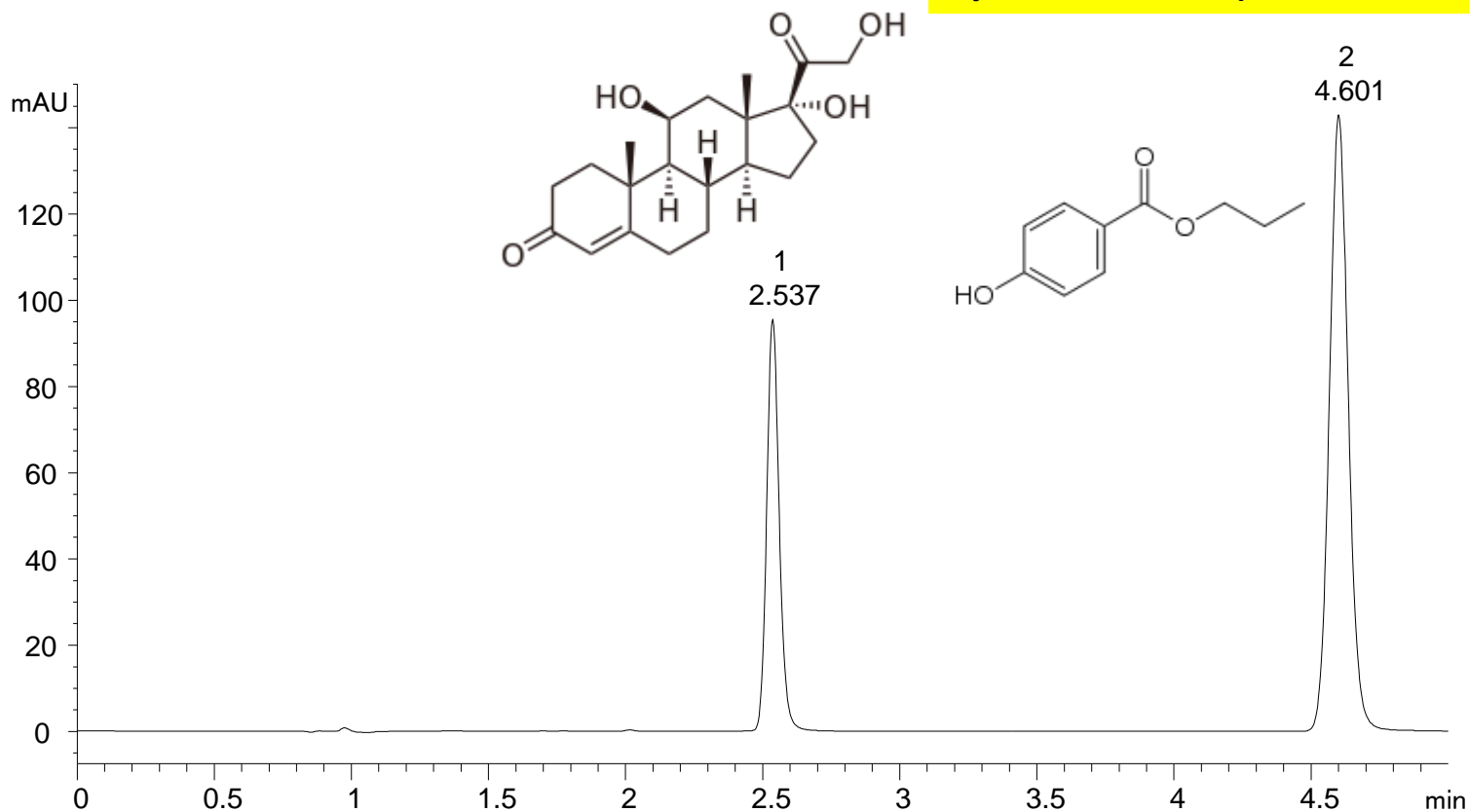


USP Hydrocortisone

Key:

- 1 Hydrocortisone
- 2 Propylparaben

ACE Ultracore SuperC18, 2.5 μ m, 100 x 4.6 mm
Isocratic analysis
MeCN/MeOH/H₂O (25:25:50 v/v)
Flow rate: 1 ml/min
Column temperature: Ambient (22°C)
Detection: UV at 253 nm
Injection volume: 5.8 μ l



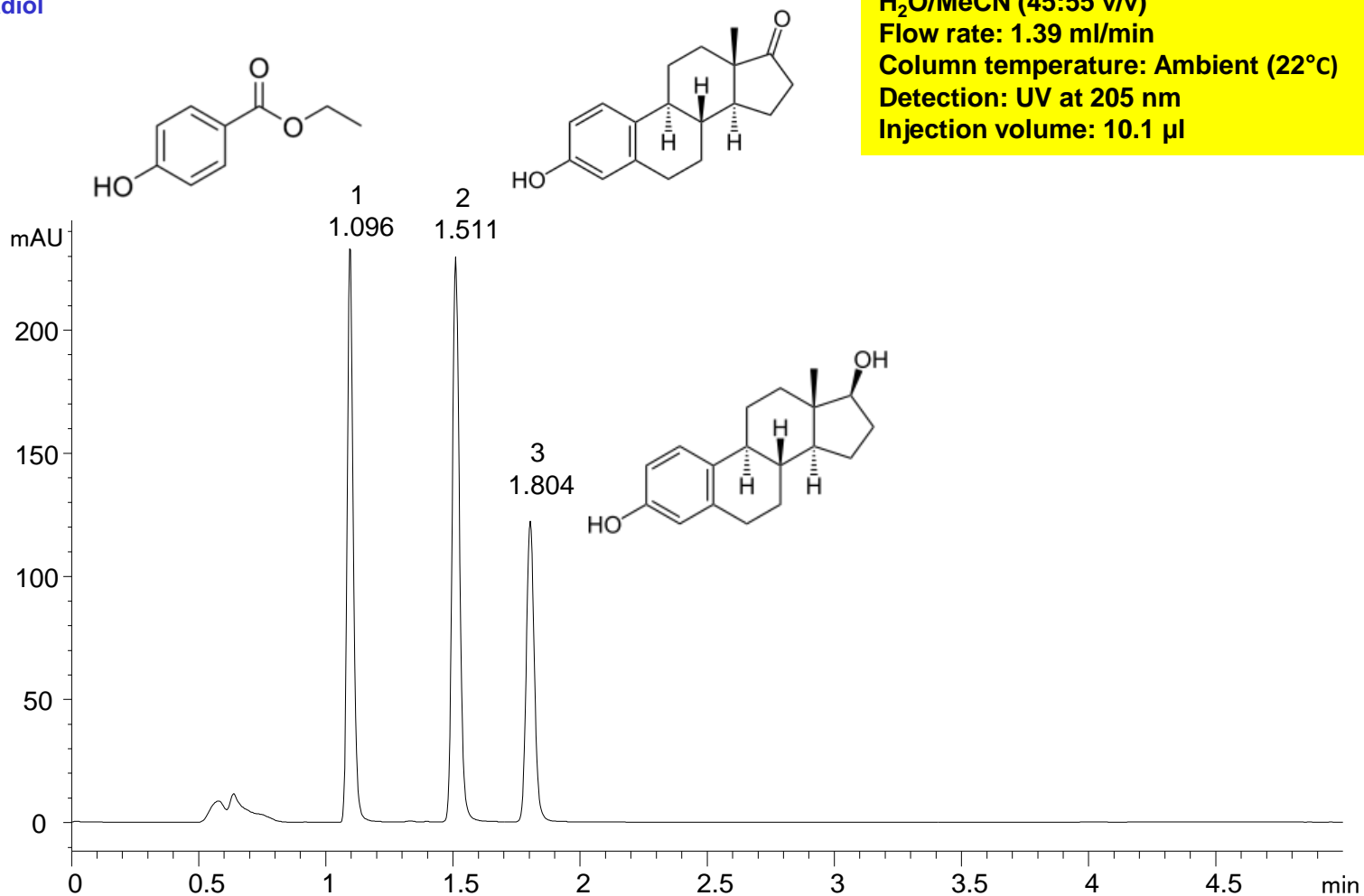


USP Estradiol

Key:

- 1 Ethylparaben
- 2 Estrone
- 3 Estradiol

ACE Ultracore SuperC18, 2.5 μ m, 100 x 4.6 mm
Isocratic analysis
H₂O/MeCN (45:55 v/v)
Flow rate: 1.39 ml/min
Column temperature: Ambient (22°C)
Detection: UV at 205 nm
Injection volume: 10.1 μ l



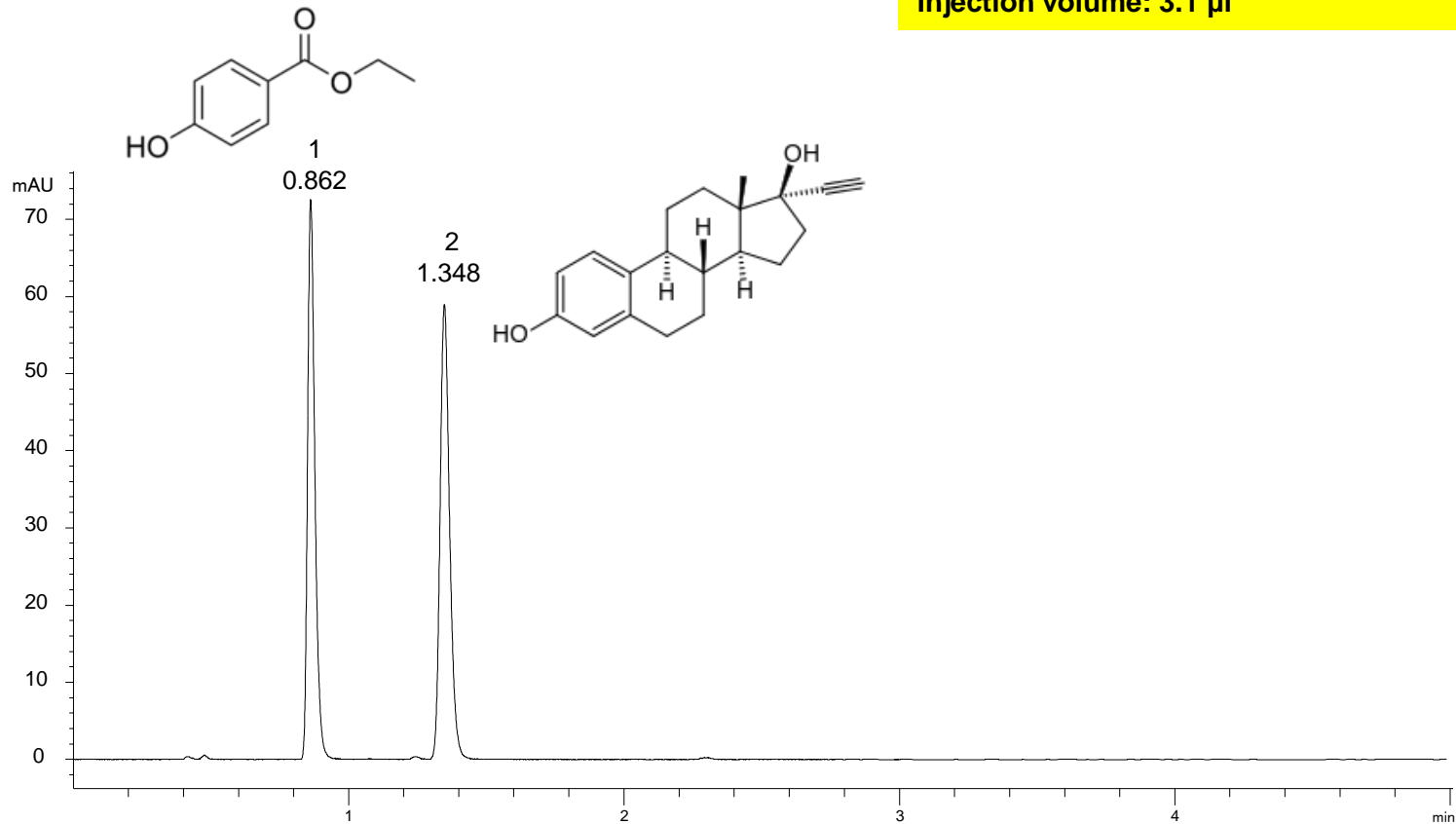


USP 17 α -Ethinylestradiol

Key:

- 1 Ethylparaben
- 2 17 α -Ethinylestradiol

ACE Ultracore SuperC18, 2.5 μ m, 50 x 3.0 mm
Isocratic analysis
MeCN/H₂O (50:50 v/v)
Flow rate: 0.43 ml/min
Column temperature: Ambient (22°C)
Detection: UV at 280 nm
Injection volume: 3.1 μ l

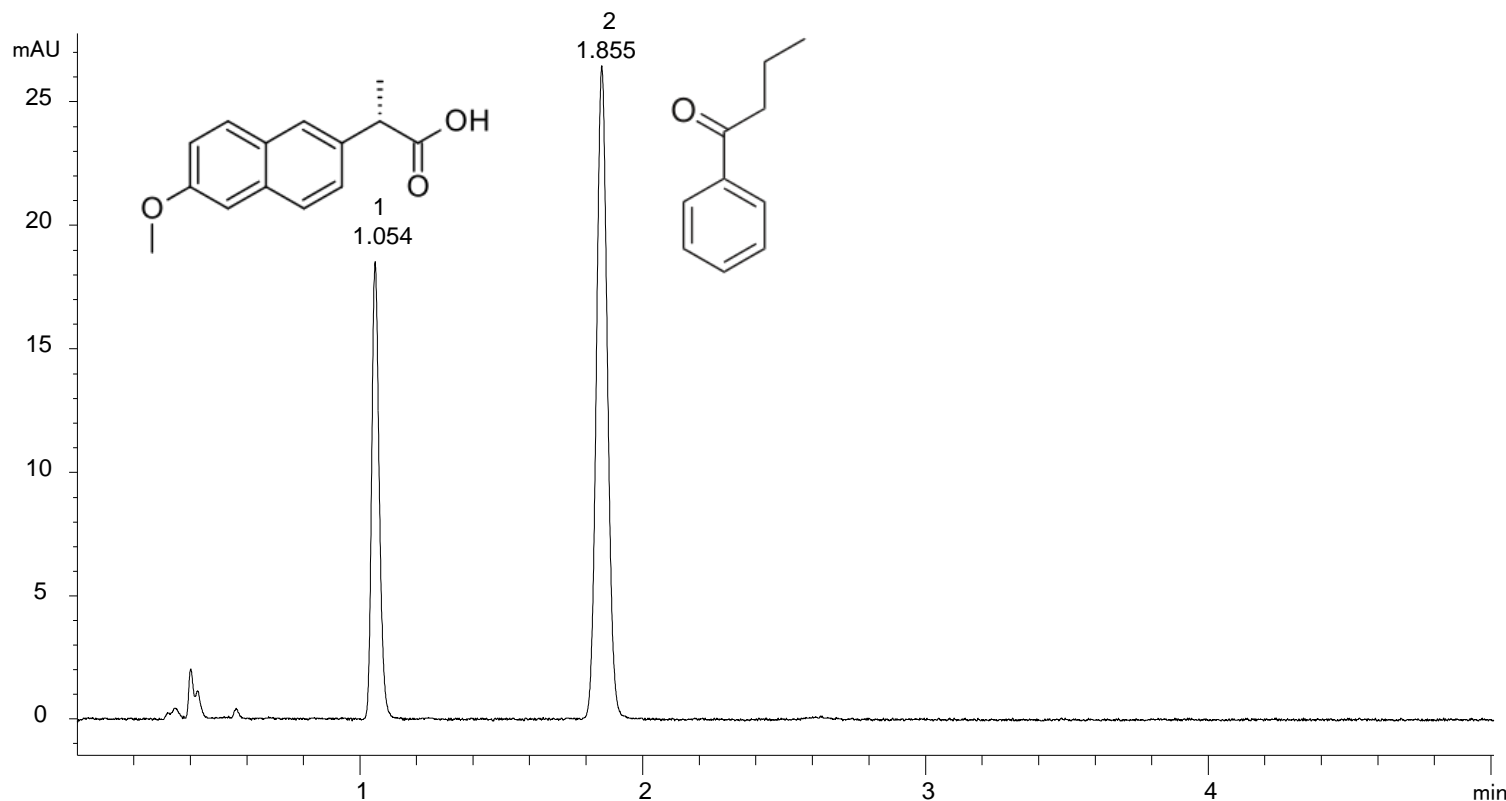


USP Naproxen

Key:

- 1 Naproxen
- 2 Butyrophenone

ACE Ultracore SuperC18, 2.5 µm, 50 x 3.0 mm
Isocratic analysis
H₂O with glacial acetic acid (49:1)/MeCN (50:50 v/v)
Flow rate: 0.51 ml/min
Column temperature: Ambient (22°C)
Detection: UV at 254 nm
Injection volume: 2.8 µl

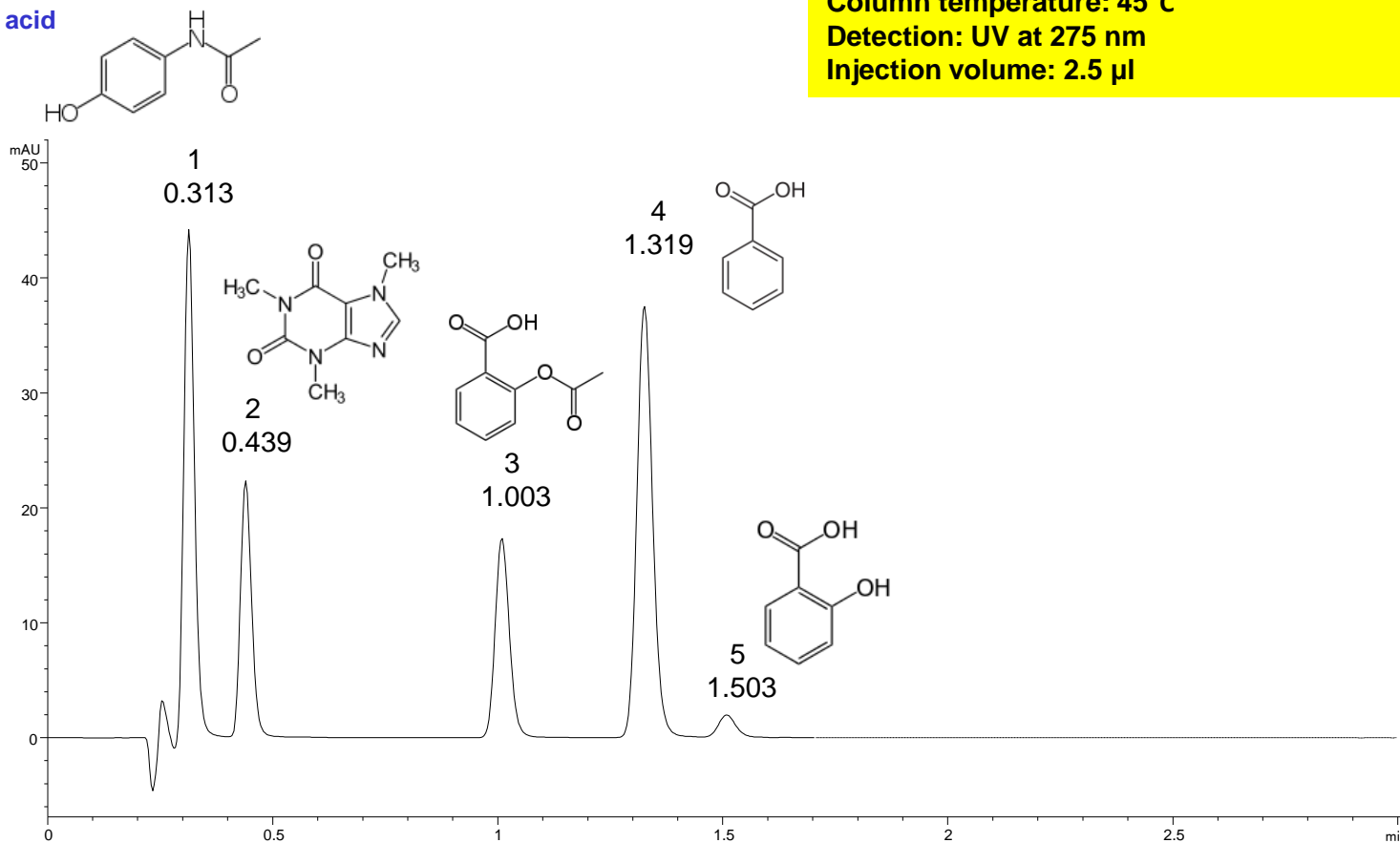


USP Paracetamol / Aspirin / Caffeine

Key:

- 1 Paracetamol
- 2 Caffeine
- 3 Aspirin
- 4 Benzoic acid
- 5 Salicylic acid

ACE Ultracore SuperC18, 2.5 µm, 50 x 4.6 mm
Isocratic analysis
H₂O with glacial acetic acid (69:3)/MeOH (72:28 v/v)
Flow rate: 2 ml/min
Column temperature: 45°C
Detection: UV at 275 nm
Injection volume: 2.5 µl



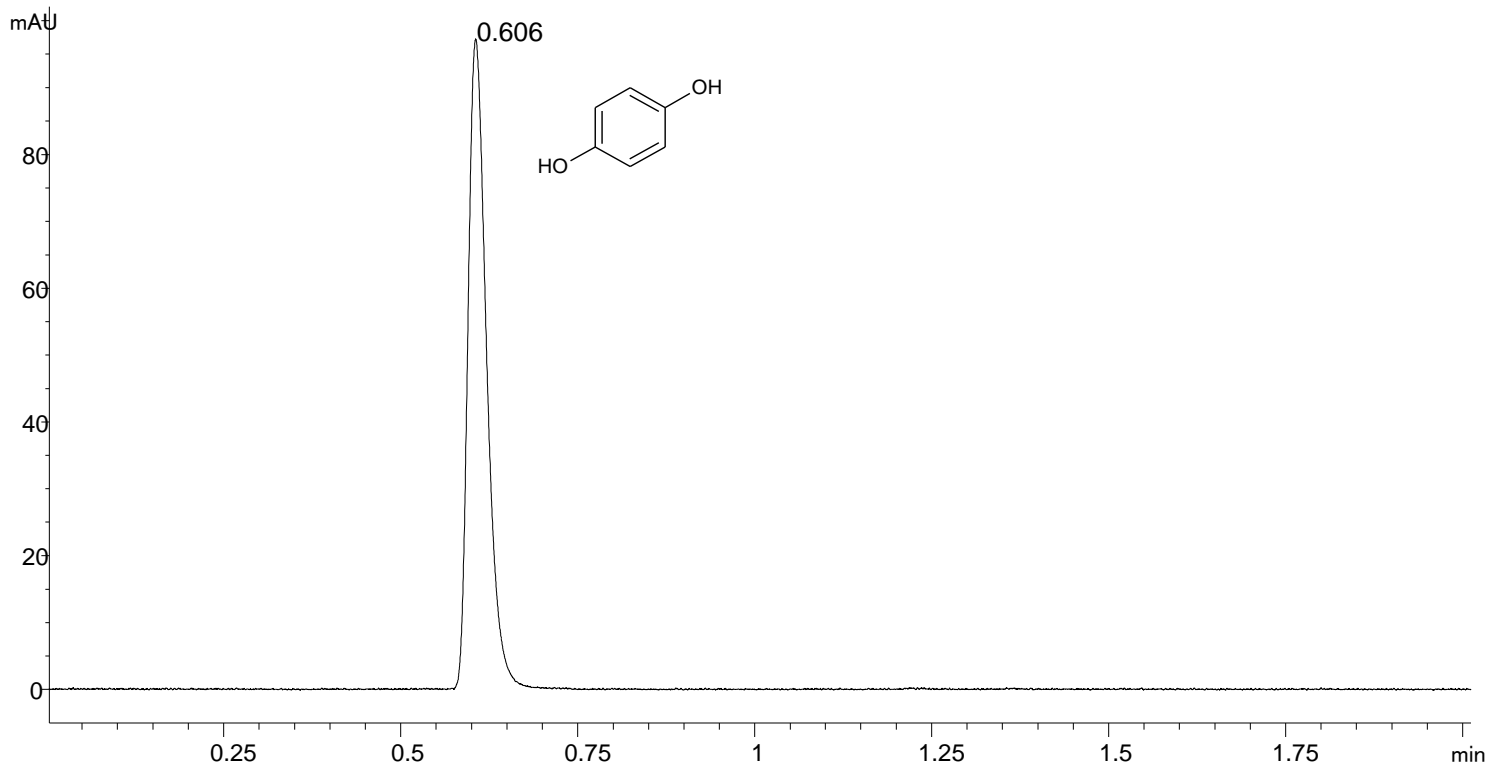


USP Hydroquinone

Key:

1 Hydroquinone

ACE Excel C18, 2 μ m, 50 x 3.0 mm
Isocratic analysis
H₂O/MeOH (45:55 v/v)
Flow rate: 0.45 ml/min
Column temperature: Ambient (22°C)
Detection: UV at 280 nm
Injection volume: 0.9 μ l

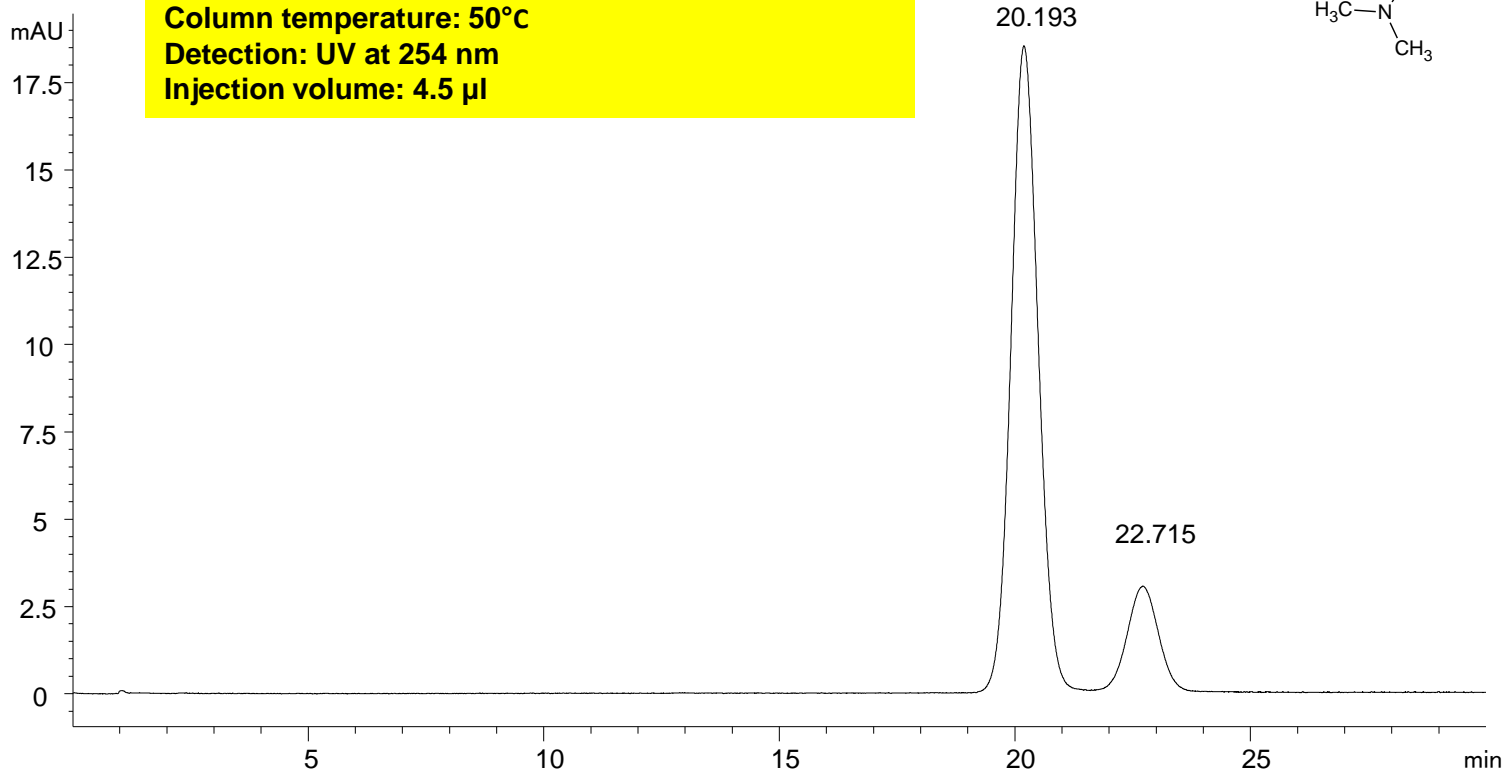
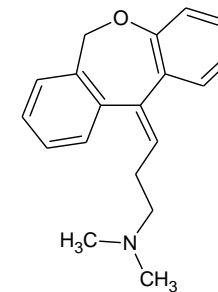


USP Doxepin

Key:

- 1 Doxepin isomer
- 2 Doxepin isomer

ACE C8, 3 µm, 50 x 4.6 mm
Isocratic analysis
0.2 M Monobasic NaH₂PO₄ in water pH 2.5:MeOH
(30:70 v/v)
Flow rate: 0.56 ml/min
Column temperature: 50°C
Detection: UV at 254 nm
Injection volume: 4.5 µl

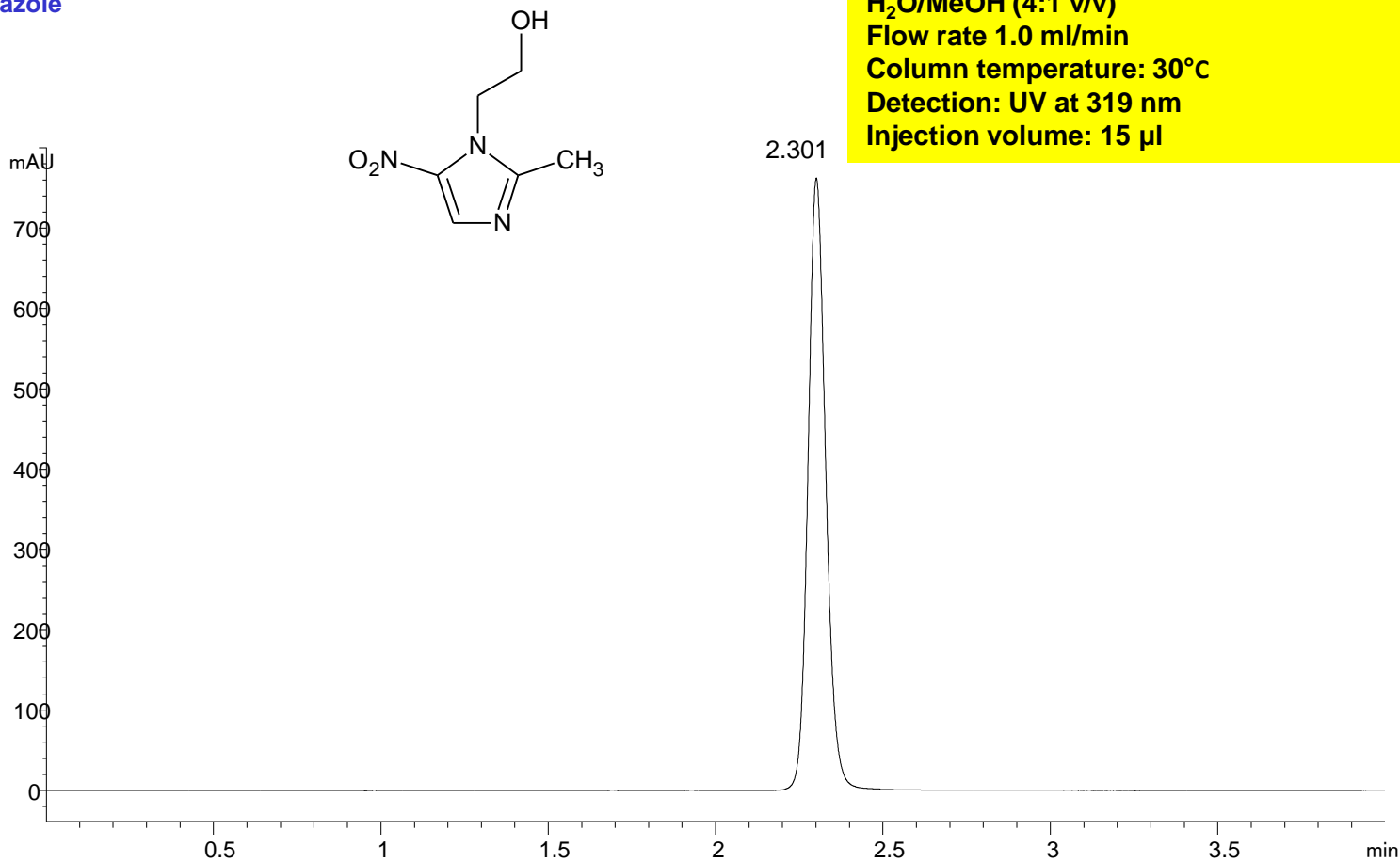




USP Metronidazole

Key:

1 Metronidazole



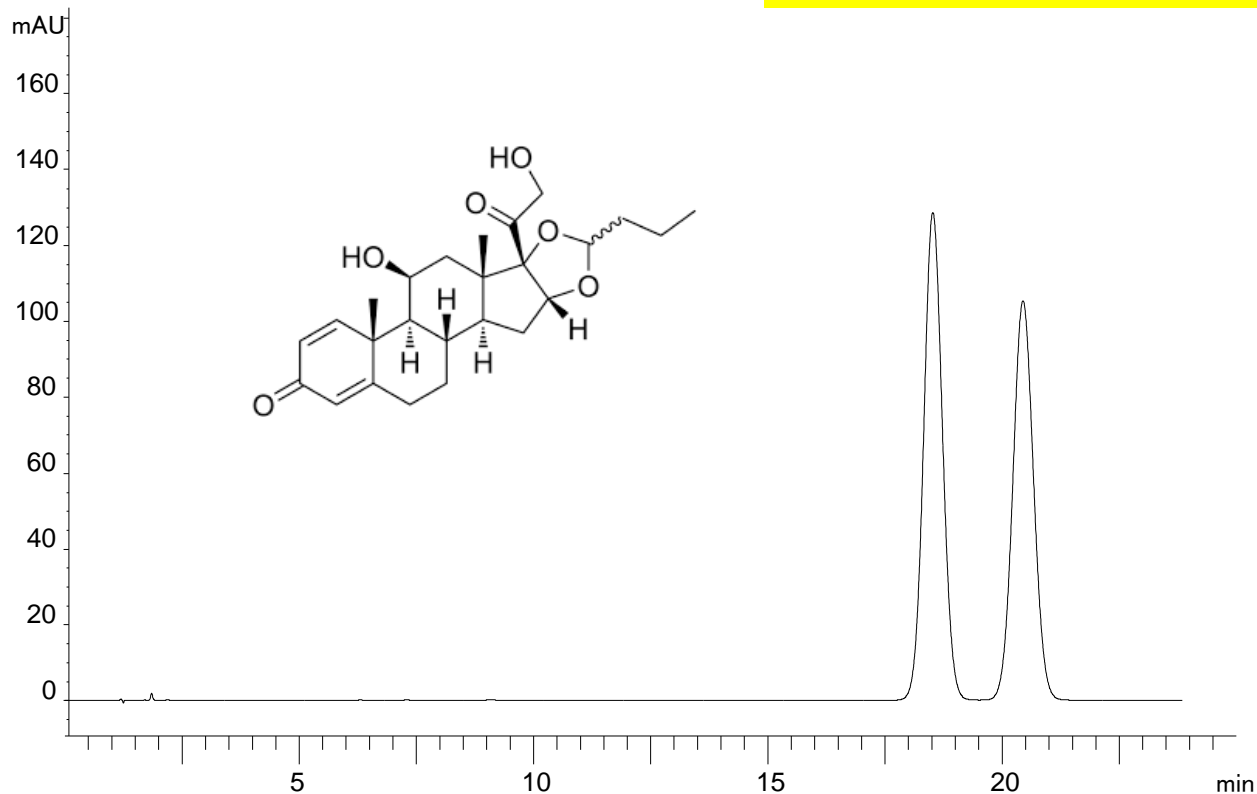


USP Budesonide

Key:

- 1 Budesonide B
- 2 Budesonide A

ACE C18, 5 µm, 150 x 4.6 mm
Isocratic analysis
18 mM monobasic sodium phosphate pH 3.2 in H₂O/MeCN (68:32 v/v)
Flow rate 1.5 ml/min
Column temperature: Ambient (22 °C)
Detection: UV at 254 nm
Injection volume: 20 µl

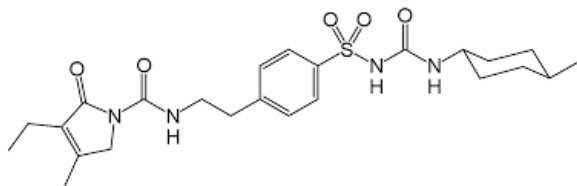
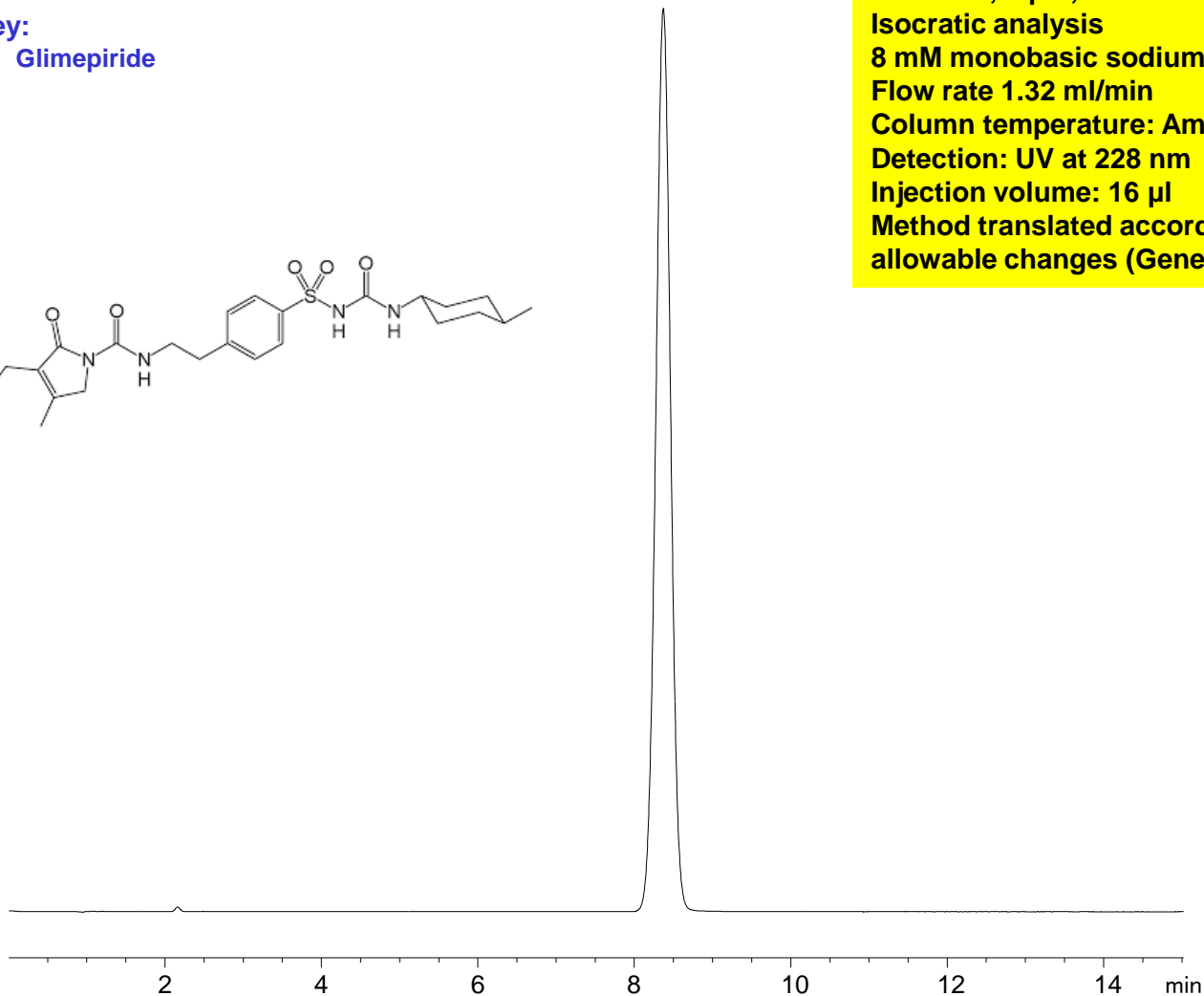




USP Glimepiride

Key:

1 Glimepiride

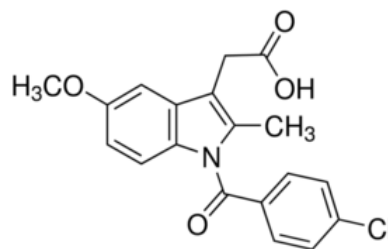
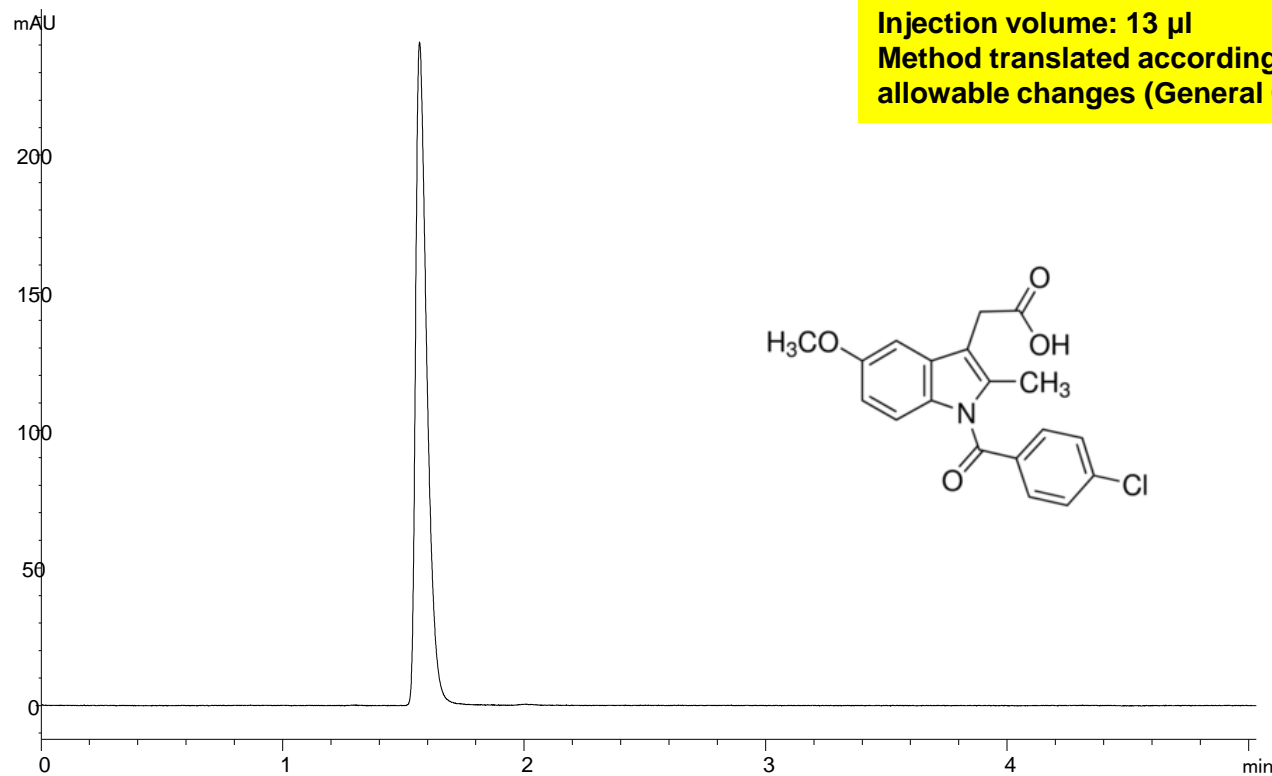
**ACE C18, 5 μ m, 150 x 4.6 mm****Isocratic analysis****8 mM monobasic sodium phosphate pH 2.4 :MeCN (1:1 v/v)****Flow rate 1.32 ml/min****Column temperature: Ambient (22 °C)****Detection: UV at 228 nm****Injection volume: 16 μ l****Method translated according to USP guidelines for allowable changes (General Chapter <621>)**



USP Indomethacin

Key:

1 Indomethacin

**ACE C18, 5 µm, 150 x 4.6 mm****Isocratic analysis****0.01M monobasic sodium phosphate and 0.01M dibasic sodium phosphate in MeCN:water 1:1 v/v****Flow rate 1.32 ml/min****Column temperature: Ambient (22 °C)****Detection: UV at 254 nm****Injection volume: 13 µl****Method translated according to USP guidelines for allowable changes (General Chapter <621>)**