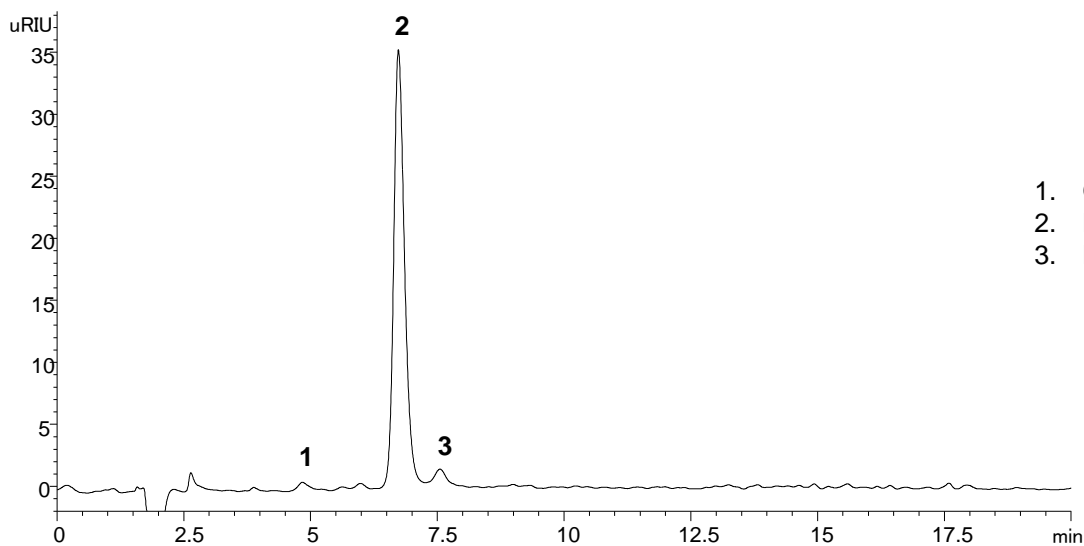


## Conditions

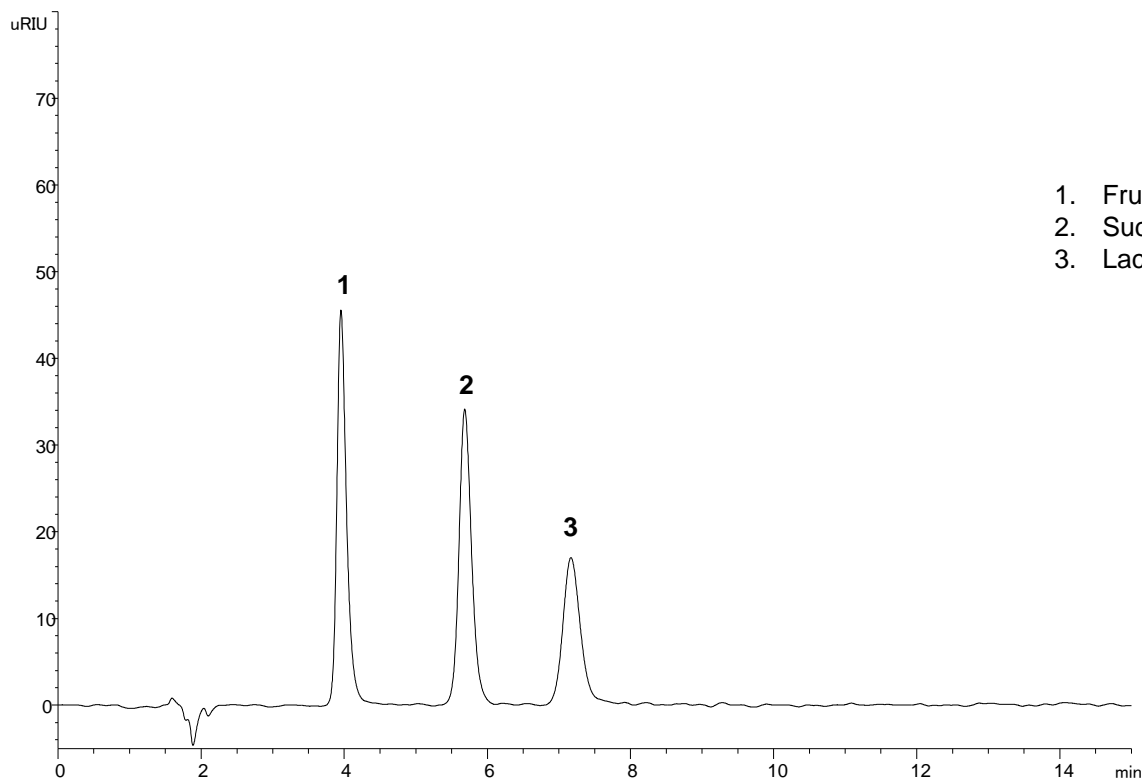
Column: ACE Excel 5 NH<sub>2</sub>  
Dimensions: 150 x 4.6 mm  
Part Number: EXL-1214-1546U  
Mobile Phase: MeCN/H<sub>2</sub>O (70:30 v/v)  
Flow Rate: 1 mL/min  
Injection: 10 µL  
Temperature: 35 °C  
Detection: RI, 35 °C  
Sample: 100 µL Lactulose in 9900 µL mobile phase  
System: Chromaster 600



1. Galactose
2. Lactulose
3. Lactose

## Conditions

Column: ACE Excel 5 NH<sub>2</sub>  
Dimensions: 150 x 4.6 mm  
Part Number: EXL-1214-1546U  
Mobile Phase: MeCN/H<sub>2</sub>O (70:30 v/v)  
Flow Rate: 1 mL/min  
Injection: 10 µL  
Temperature: 35 °C  
Detection: RI, 35 °C  
Sample: 5 mg/mL in mobile phase  
System: Chromaster 600

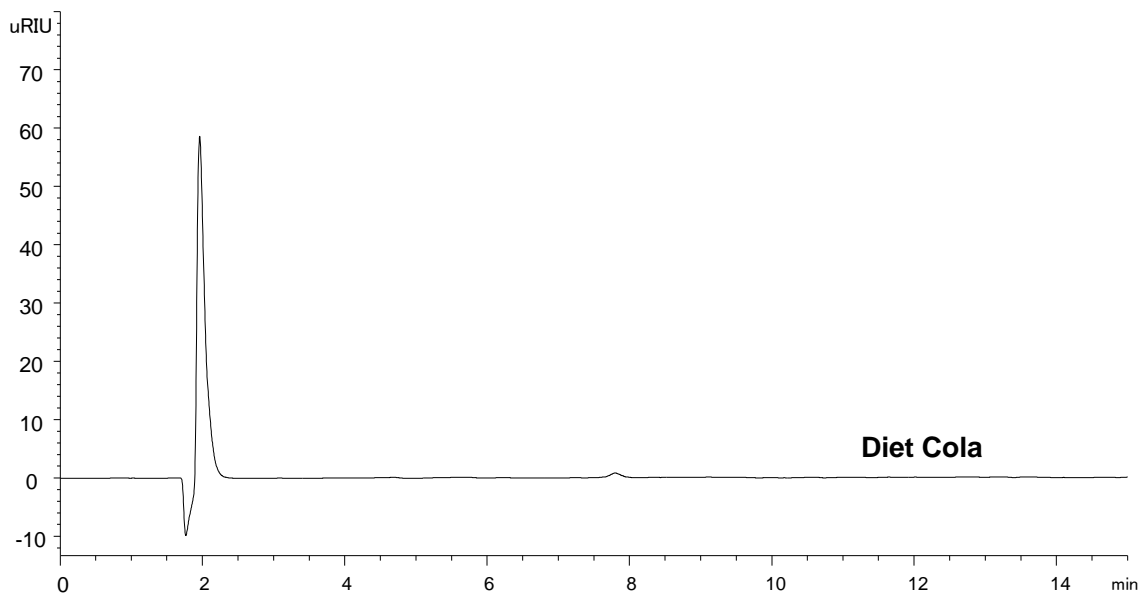
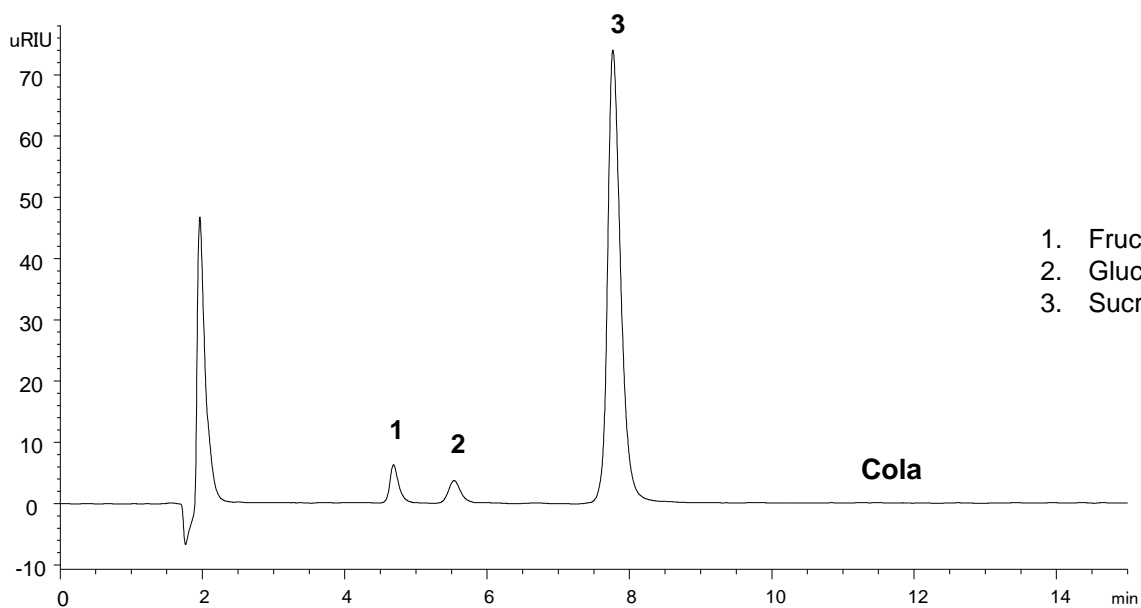


# Sugars – Cola Vs Diet Cola

Application #AN4150

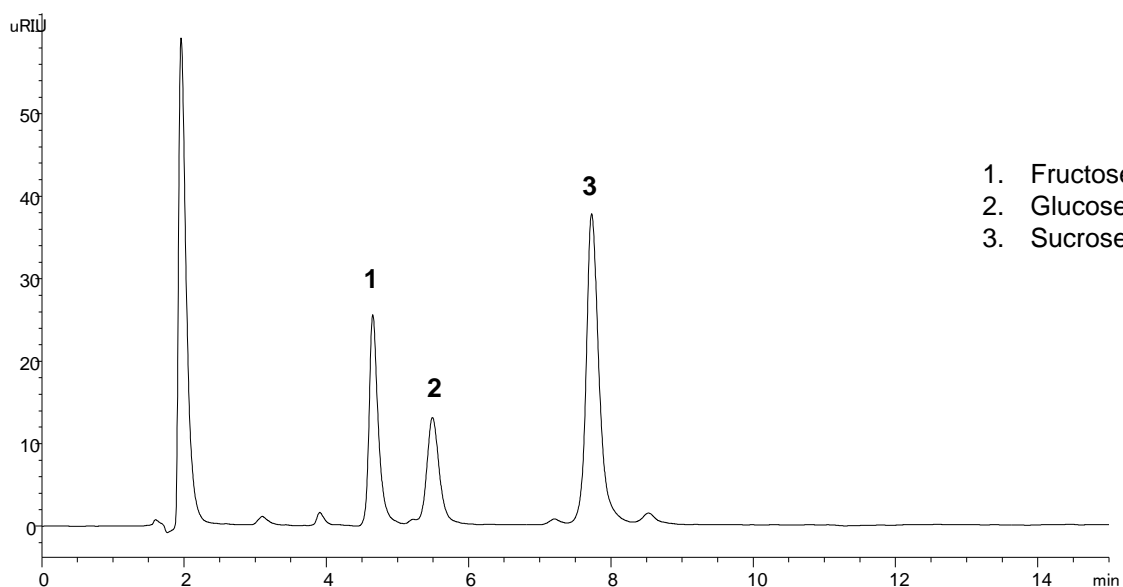
## Conditions

Column: ACE Excel 3 NH<sub>2</sub>  
Dimensions: 150 x 4.6 mm  
Part Number: EXL-1114-1546U  
Mobile Phase: MeCN/H<sub>2</sub>O (75:25 v/v)  
Flow Rate: 1 mL/min  
Injection: 10 µL  
Temperature: 35 °C  
Detection: RI, 35 °C  
Sample: 100 µL drink in 900 µL mobile phase  
System: Chromaster 600



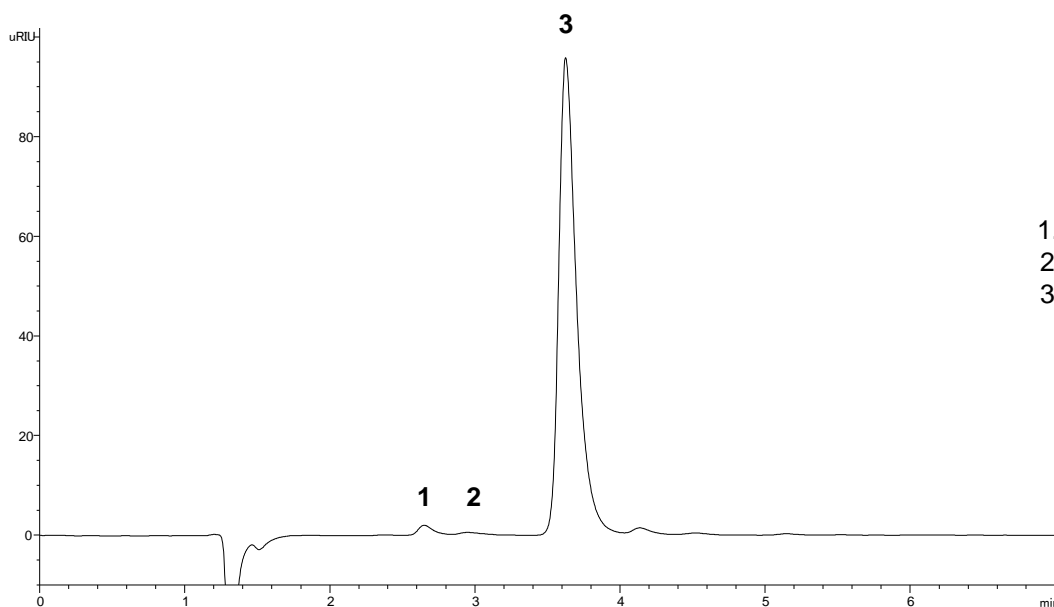
## Conditions

Column: ACE Excel 3 NH<sub>2</sub>  
Dimensions: 150 x 4.6 mm  
Part Number: EXL-1114-1546U  
Mobile Phase: MeCN/H<sub>2</sub>O (75:25 v/v)  
Flow Rate: 1 mL/min  
Injection: 10 µL  
Temperature: 35 °C  
Detection: RI, 35 °C  
Sample: 100 µL orange juice in 900 µL mobile phase  
System: Chromaster 600



## Conditions

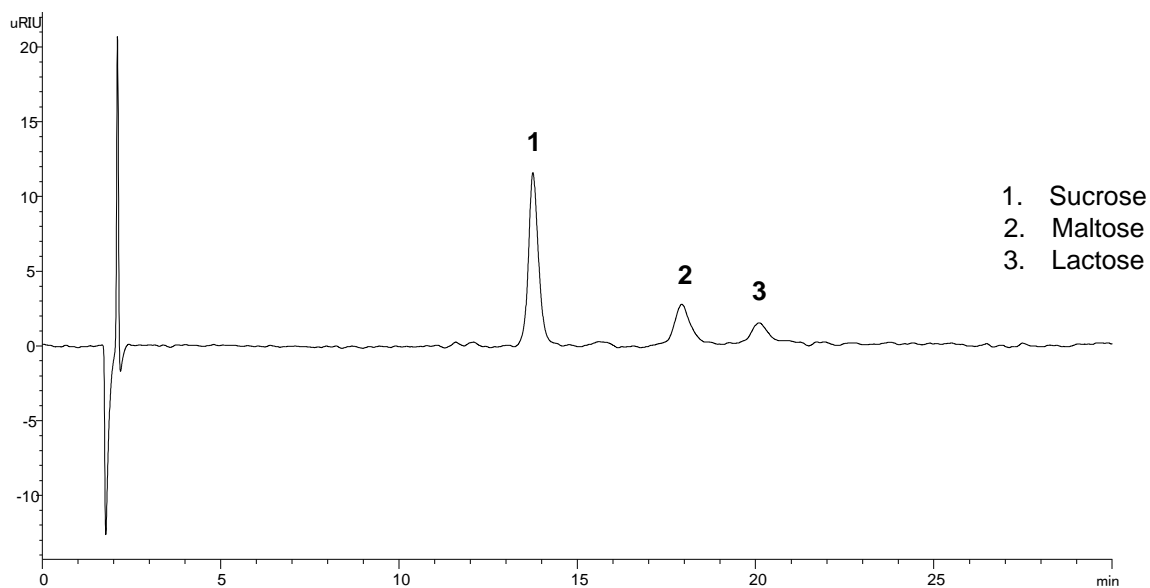
Column: ACE Excel 1.7 NH<sub>2</sub>  
Dimensions: 100 x 3.0 mm  
Part Number: EXL-1714-1003U  
Mobile Phase: MeCN/H<sub>2</sub>O (70:30 v/v)  
Flow Rate: 0.43 mL/min  
Injection: 10 µL  
Temperature: 35 °C  
Detection: RI, 35 °C  
Sample: 100 µL maple syrup in 9900 µL mobile phase  
System: Chromaster 600



1. Fructose
2. Glucose
3. Sucrose

## Conditions

Column: ACE Excel 3 NH<sub>2</sub>  
Dimensions: 150 x 4.6 mm  
Part Number: EXL-1114-1546U  
Mobile Phase: MeCN/H<sub>2</sub>O (80:20 v/v)  
Flow Rate: 1 mL/min  
Injection: 20 µL  
Temperature: 35 °C  
Detection: RI, 35 °C  
Sample: 2 mg/mL each disaccharide in MeCN/H<sub>2</sub>O (80:20 v/v)  
System: Chromaster 600



## Conditions

Column:	ACE Excel 5 NH <sub>2</sub>
Dimensions:	150 x 4.6 mm
Part Number:	EXL-1214-1546U
Mobile Phase:	MeCN/H <sub>2</sub> O (75:25 v/v)
Flow Rate:	1 mL/min
Injection:	10 µL
Temperature:	35 °C
Detection:	RI, 35 °C
Sample:	5 mg/mL per monosaccharide in MeCN/H <sub>2</sub> O (70:30 v/v)
System:	Chromaster 600

