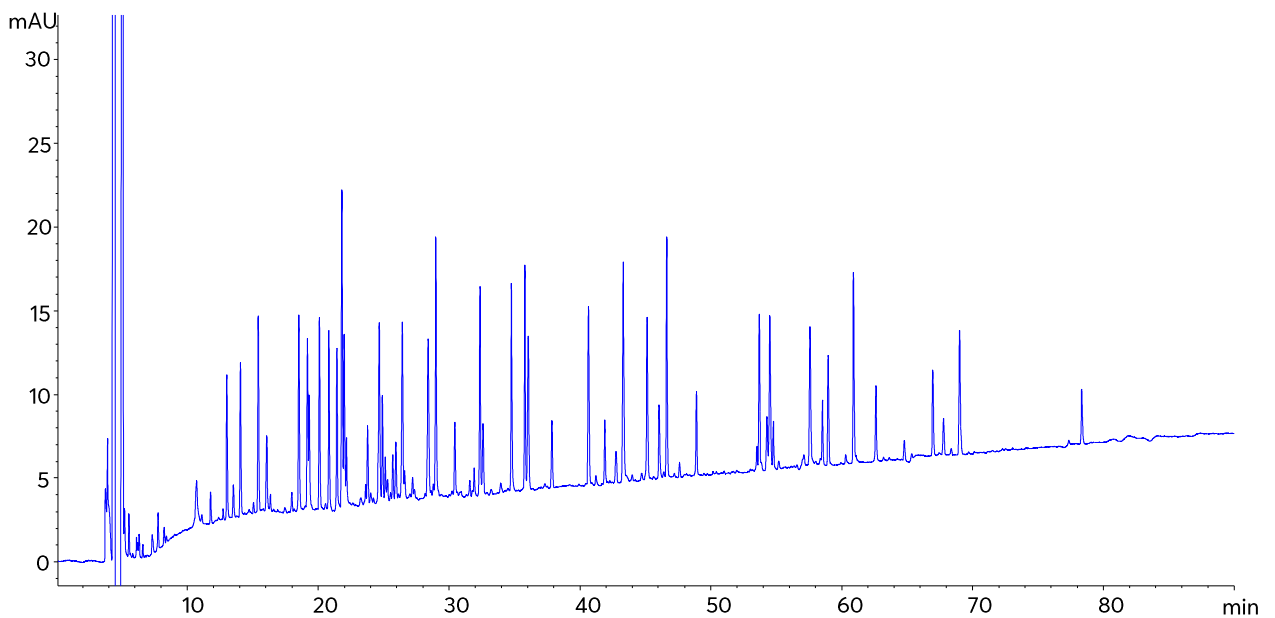


BSA Tryptic Digest Analysis using Column Coupling



Method Details

CONDITIONS

Column: 3 x Avantor® ACE® UltraCore™ 2.5 SuperC18™ columns coupled together

Particle Size: 2.5 µm

Dimensions: 150 x 2.1 mm (each column)

Mobile Phases: A: 0.05 % TFA in H₂O
B: 0.05 % TFA in MeCN

Gradient:

Time (mins)	% B
0	10
90	40
120	65
125	95
130	95
132	10
180	10

Flow Rate: 0.21 mL/min

Injection: 20 µL

Temperature: 60 °C

Detection: UV, 214 nm

ORDERING TABLE

Product	Details	Size	Part Number
Avantor® ACE® UltraCore™ 2.5 SuperC18™	HPLC Column	150 x 2.1 mm	CORE-25A-1502U
Acetonitrile	VWR CHROMANORM® super gradient grade	2.5 L	83639.320
Water	VWR CHROMANORM® super gradient grade	2.5 L	83650.320
Trifluoroacetic acid	VWR HiPerSolv CHROMANORM® for LC/MS	10 x 1 mL	85049.001