

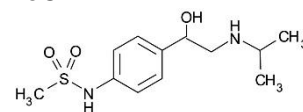
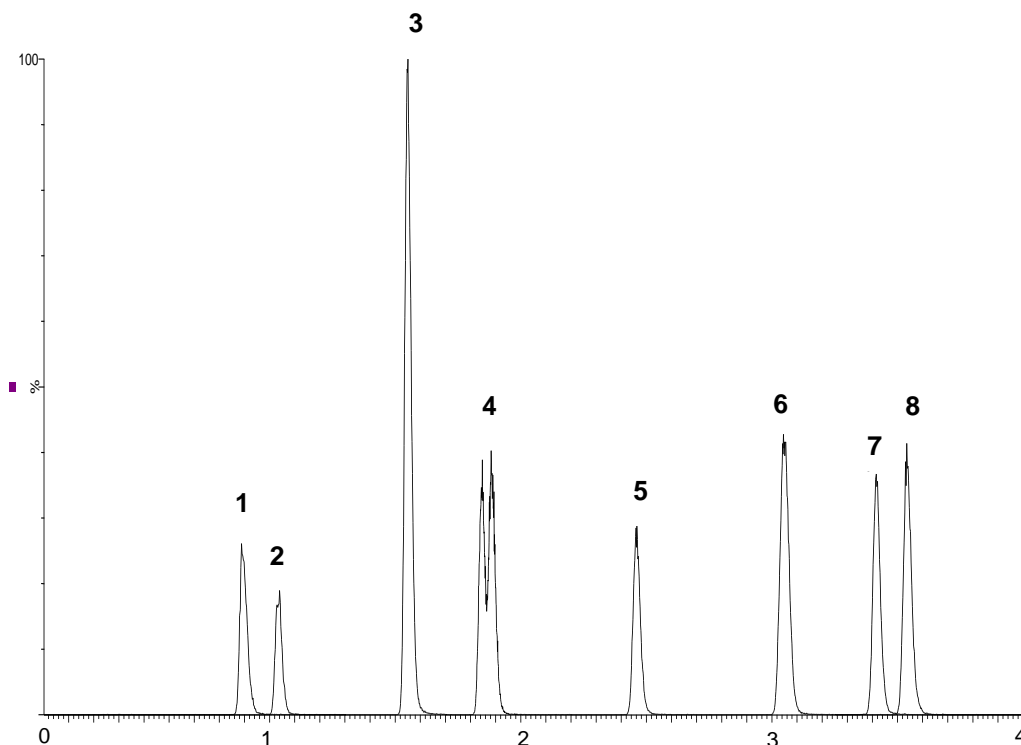
Application #AN2620

Conditions

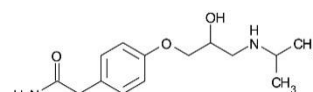
Column: ACE Excel 2 C18
Dimensions: 50 x 2.1 mm
Part Number: EXL-101-0502U
Mobile Phase: A: 2 mM ammonium acetate + 0.1% formic acid in H₂O
B: 2 mM ammonium acetate + 0.1% formic acid in MeOH

Time (mins)	%B
0.0	10
3.0	50
3.1	10

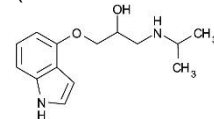
Flow Rate: 0.4 mL/min
Injection: 10 µL
Temperature: 40 °C
Detection: MS/MS
ESI in positive ion mode
Sample: 2.5 pg/µL



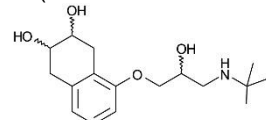
1. Sotalol
(*m/z* 272.9 → 212.8)



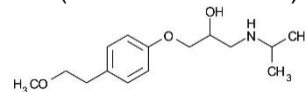
2. Atenolol
(*m/z* 267.0 → 189.8)



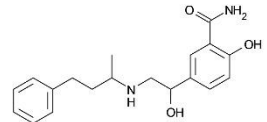
3. Pindolol
(*m/z* 248.9 → 115.8)



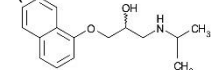
4. Nadolol diastereomers
(*m/z* 310.0 → 253.9)



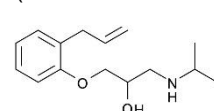
5. Metoprolol
(*m/z* 268.0 → 115.8)



6. Labetalol
(*m/z* 329.1 → 161.8)



7. Propranolol
(*m/z* 260.0 → 115.7)



8. Alprenolol
(*m/z* 250.0 → 115.8)

Reproduced with permission of Biotage GB Ltd
© 2015 ACT Ltd. All rights reserved. All products are available worldwide.

For more information contact your local ACE distributor or visit
www.ace-hplc.com or email: info@ace-hplc.com