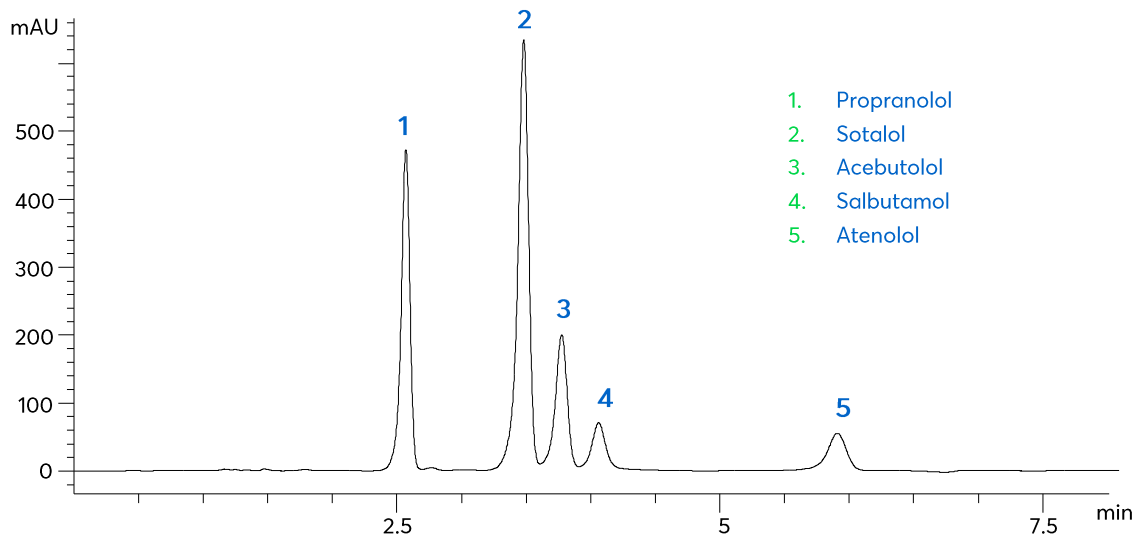


# Application note #4530

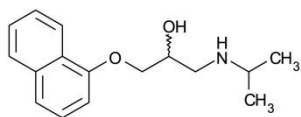
## $\beta$ -Blockers using HILIC Mode



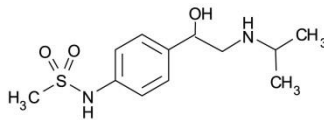
# Method Details

## CONDITIONS

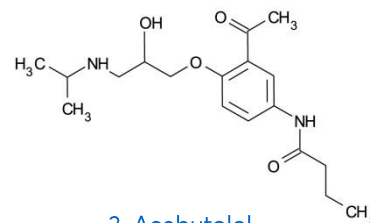
Column:	ACE 5 HILIC-A
Dimensions:	150 x 4.6 mm
Mobile Phase:	12 mM ammonium formate pH 4.7 in MeCN/H <sub>2</sub> O (88:12 v/v)
Flow Rate:	1.5 mL/min
Injection:	2 µL
Temperature:	25 °C
Detection:	UV, 230 nm



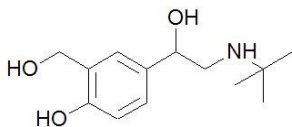
1. Propranolol



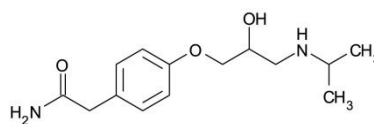
2. Sotalol



3. Acebutolol



4. Salbutamol



5. Atenolol

## ORDERING TABLE

Product	Details	Size	Part number
Avantor® ACE® 5 HILIC-A	HPLC column	150 x 4.6 mm	HILA-5-1546U
Acetonitrile	VWR CHROMANORM® gradient grade	2.5 L	83639.320
Water	VWR CHROMANORM® gradient grade	2.5 L	83650.320
Ammonium formate	VWR CHROMANORM® for LC-MS	100 g	84884.180