

Application note # C-13068

Blood Alcohol Analysis using Headspace GC on the Avantor[®] Hichrom HI-ALC 1 Phase

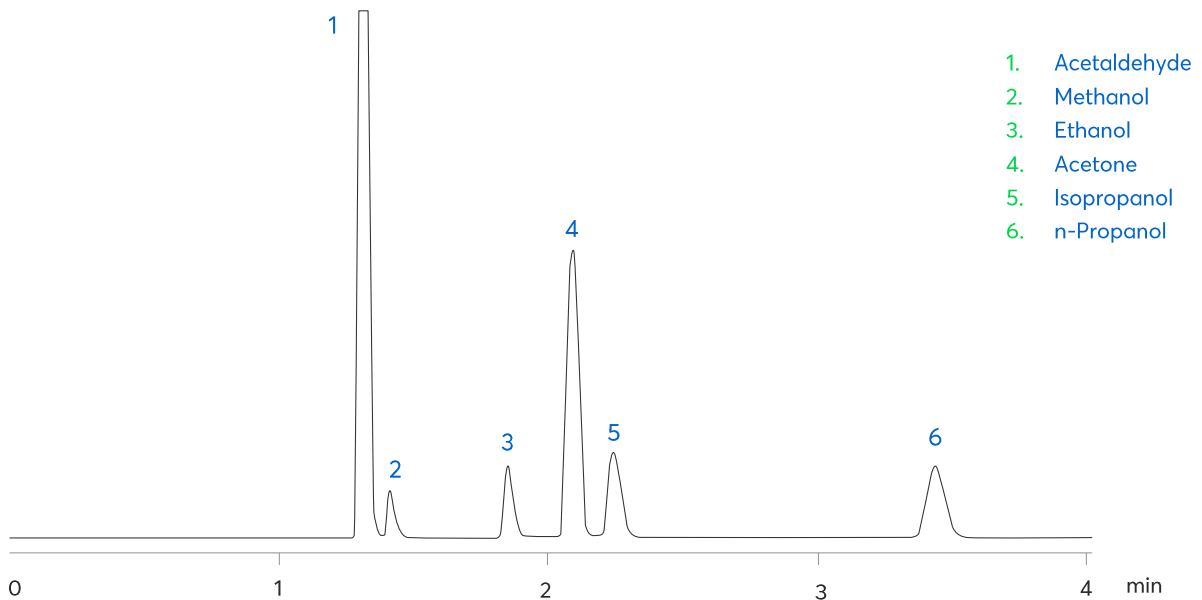


Figure 1: Headspace analysis of blood alcohol using the Avantor[®] Hichrom HI-ALC 1 phase.

Method Details

CONDITIONS

| | |
|---------------|---|
| Oven Program: | 40 °C Isothermal |
| Carrier Gas: | Hydrogen, 50 kPa |
| Injector: | Split, 250 °C, 1.0 mL with gas syringe |
| Detector: | FID, 250 °C |
| Sample: | Headspace of blood alcohol mix, hold 15 min @ 80 °C |

The HI-ALC 1 is an application specific column developed for blood alcohol analysis. Offering alternative selectivity to the HI-ALC 2 column.

ORDERING TABLE

| Product | Details | Dimensions | Part Number |
|---------------------------|-----------|------------------------|----------------|
| Avantor® Hichrom HI-ALC 1 | GC Column | 0.32 mm, 1.50 µm, 30 m | HI36-32-150-30 |