

# Bufotenine Extract from *Rhinella Jimi* Toad Skin Secretions

**ACE**<sup>®</sup>  
Ultra-inert  
UHPLC & HPLC Columns

Application #AN3800

## Conditions

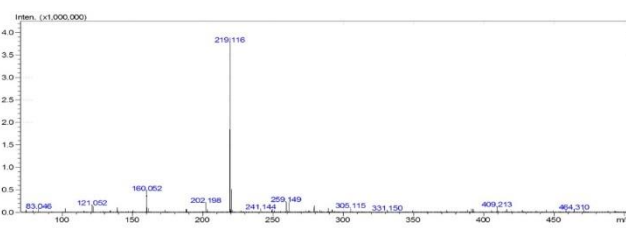
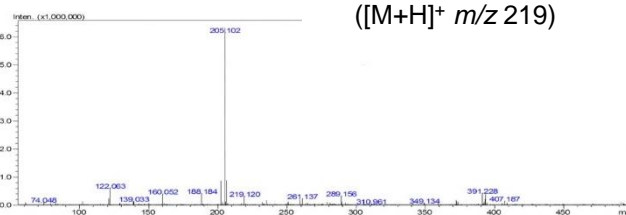
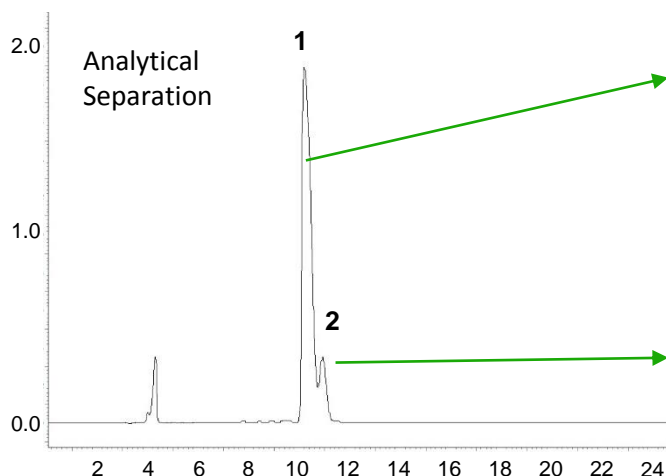
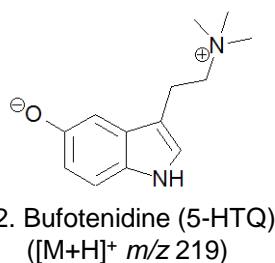
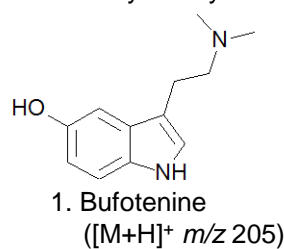
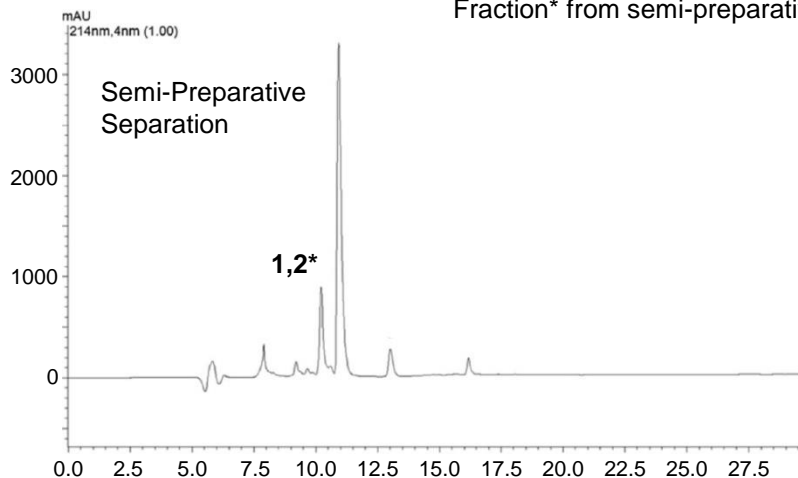
Column: ACE 5 C18  
Dimensions: 250 x 7.75 mm (semi-preparative separation) and 250 x 4.6 mm (analytical)  
Part Number: ACE-121-2508 and ACE-121-2546  
Mobile Phase: A: 0.1% TFA in H<sub>2</sub>O  
B: 0.1% TFA in H<sub>2</sub>O/MeCN (10:90 v/v)

Semi-Preparative		Analytical	
Time (mins)	%B	Time (mins)	%B
0	10	0	13
35	70	15	15

Flow Rate: 1.7 mL/min (semi-preparative) and 1.1 mL/min (analytical)  
Temperature: 4 °C (analytical)  
Detection: UV, 214 nm

MS positive ESI mode for peak identification

Sample: Aqueous extract from liquid-liquid partition of toad skin secretion  
Fraction\* from semi-preparative separation injected into analytical system.



Vigerelli H, Sciani JM, Jared C, Antoniazzi MM, Caporale GMM, Rodrigues da Silva A, Pimenta DC. Bufotenine is able to block rabies virus infection in BHK-21 cells. *Journal of Venomous Animals and Toxins including Tropical Diseases* 2014, 20:45. doi:10.1186/1678-9199-20-45

© 2015 ACT Ltd. All rights reserved. All products are available worldwide.

For more information contact your local ACE distributor or visit  
[www.ace-hplc.com](http://www.ace-hplc.com) or email: [info@ace-hplc.com](mailto:info@ace-hplc.com)

**ACE**<sup>®</sup>  
UHPLC & HPLC  
Columns