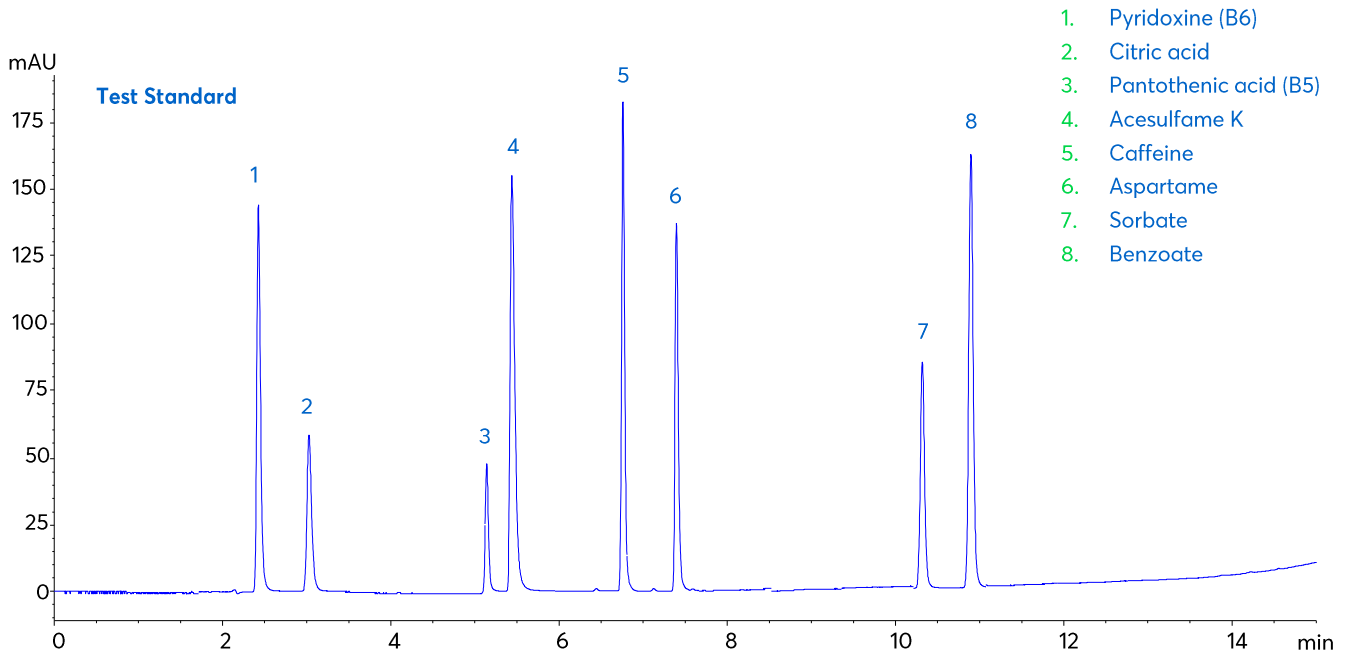
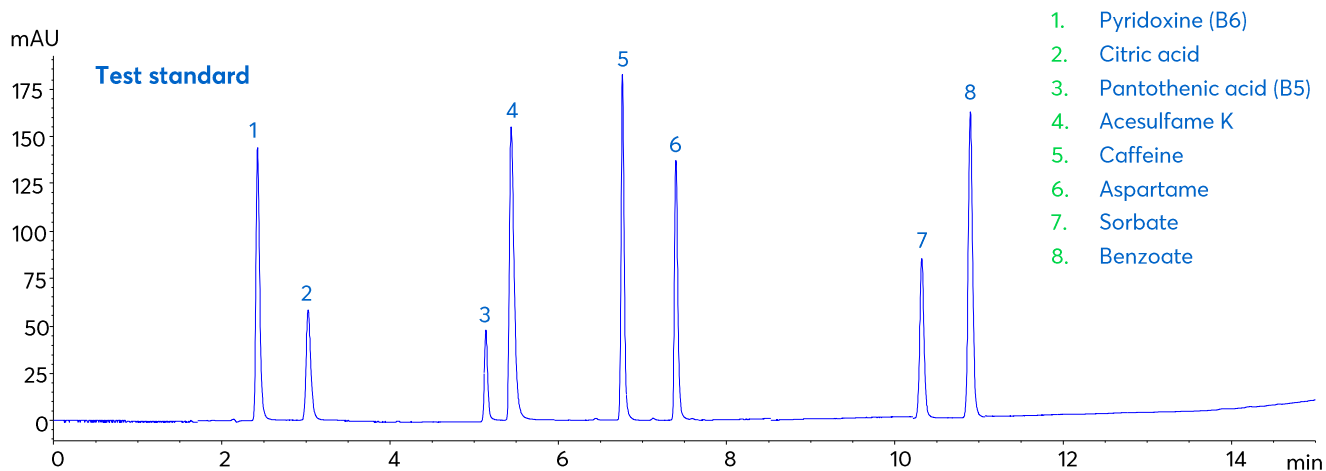
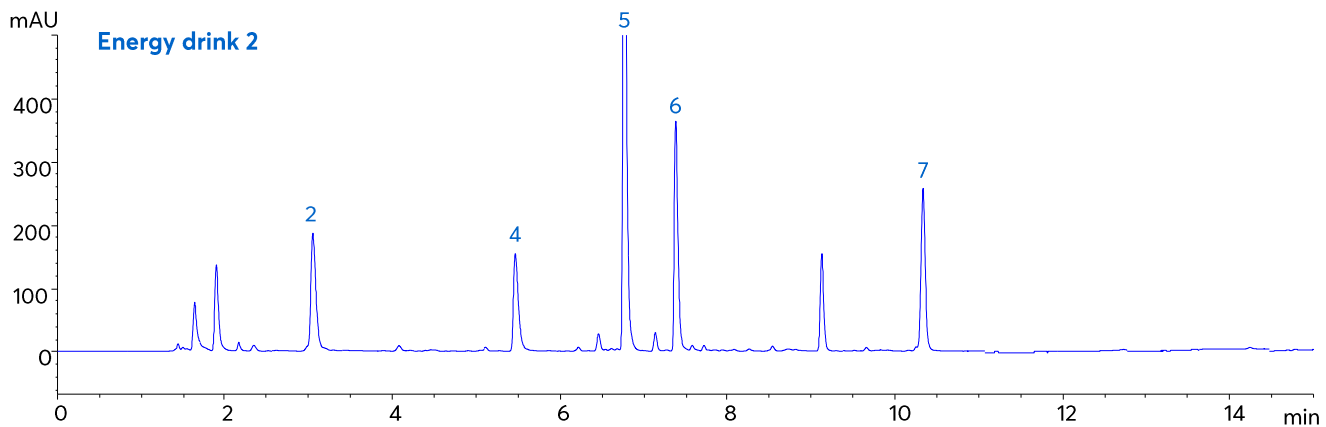
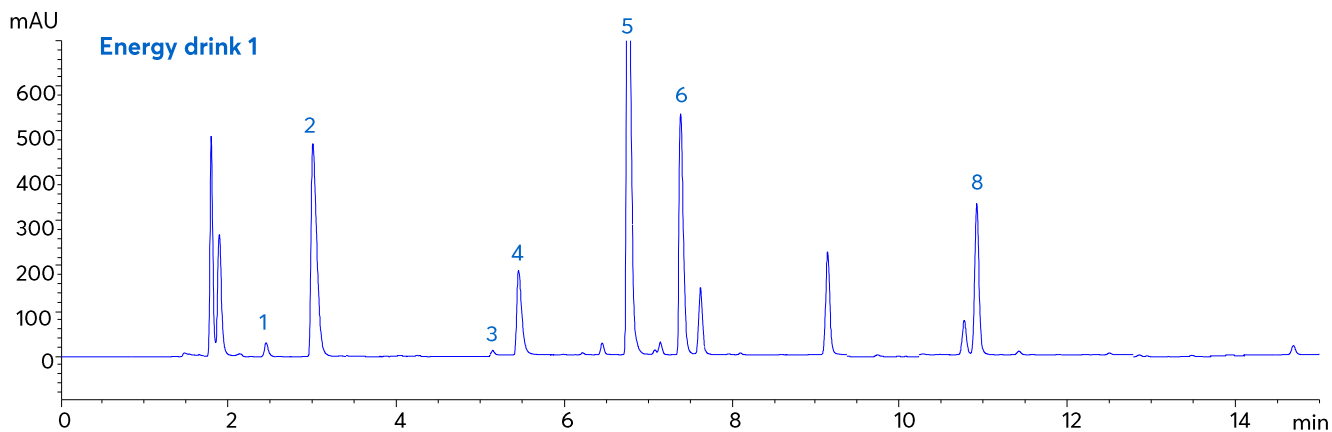


Caffeine, Sweeteners and Preservatives





The method was used to test two brands of energy drink:



Method Details

CONDITIONS

Column: Avantor® ACE® Excel® 3 C18-Amide

Dimensions: 150 x 4.6 mm

Mobile Phases: A: 0.1% Phosphoric acid in H₂O
B: 0.1% Phosphoric acid in MeCN

Gradient:

Time (mins)	%B
0.0	5
12.0	65
15.0	95
16.0	95
16.5	5
30.0	5

Flow Rate: 1.0 mL/min

Injection: 5 µL

Temperature: 30 °C

Detection: UV, 214 nm

Instrument: VWR Hitachi Chromaster

ORDERING TABLE

Product	Details	Size	Part number
Avantor® ACE® Excel® 3 C18-Amide	HPLC column	150 x 4.6 mm	EXL-1112-1546U
Acetonitrile	VWR CHROMANORM® gradient grade	2.5 L	83639.320
Water	VWR CHROMANORM® super gradient grade	2.5 L	83650.320
Orthophosphoric acid 85%	VWR NORMAPUR® analytical reagent	500 mL	20624.262
VWR Chromaster HPLC system	Pre-configured complete system with UV detector		903-0337