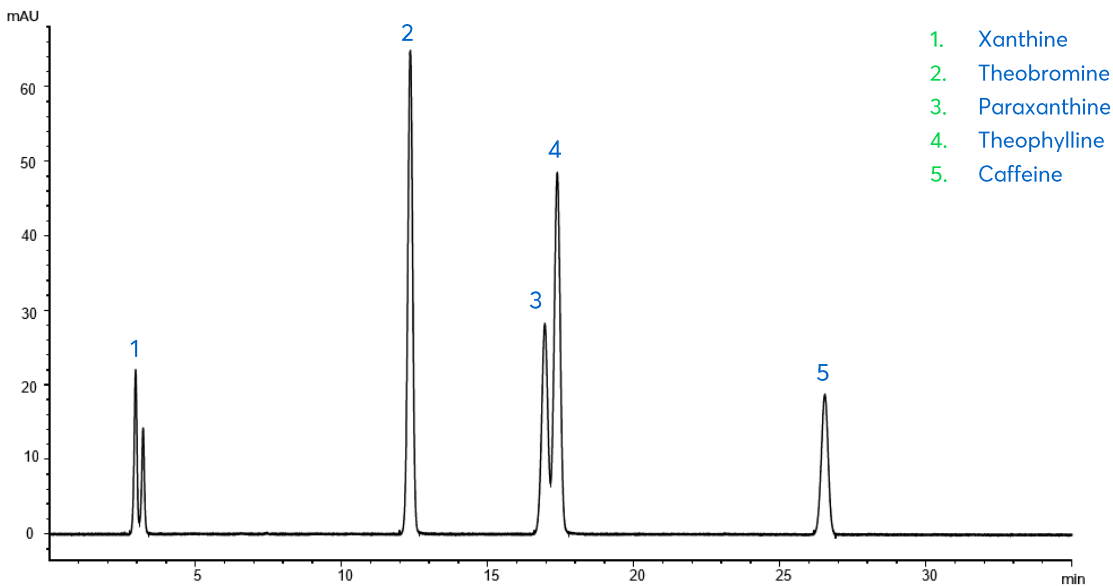


Caffeine and Metabolites



Method Details

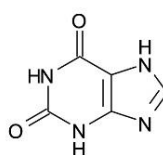
CONDITIONS

Column:	Avantor® ACE® Excel® 5 SuperC18
Particle Size:	5 µm
Dimensions:	150 x 4.6 mm
Mobile Phase:	A: 20 mM ammonium acetate pH 7.0 in H ₂ O B: 20 mM ammonium acetate pH 7.0 in MeCN/H ₂ O (90:10 v/v)

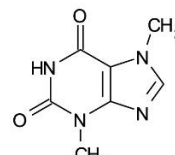
Gradient:

Time (mins)	% B
0	2
45	15
48	15
49	2
Post time 10 minutes	

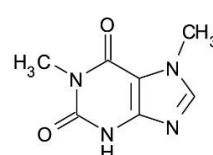
Flow Rate:	1 mL/min
Injection:	1 µL
Temperature:	60 °C
Detection:	UV, 273 nm



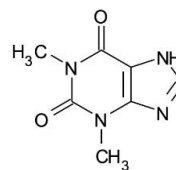
Xanthine



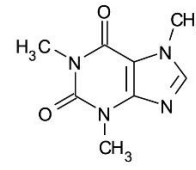
Theobromine



Paraxanthine



Theophylline



Caffeine

ORDERING TABLE

Product	Details	Size	Part Number
Avantor® ACE® Excel® 5 SuperC18	HPLC Column	150 x 4.6 mm	EXL-1211-1546U
Acetonitrile	VWR CHROMANORM® super gradient grade	2.5 L	83639.320
Water	VWR CHROMANORM® super gradient grade	2.5 L	83650.320
Ammonium acetate	VWR HiPerSolv CHROMANORM® for HPLC	250 g	153164R