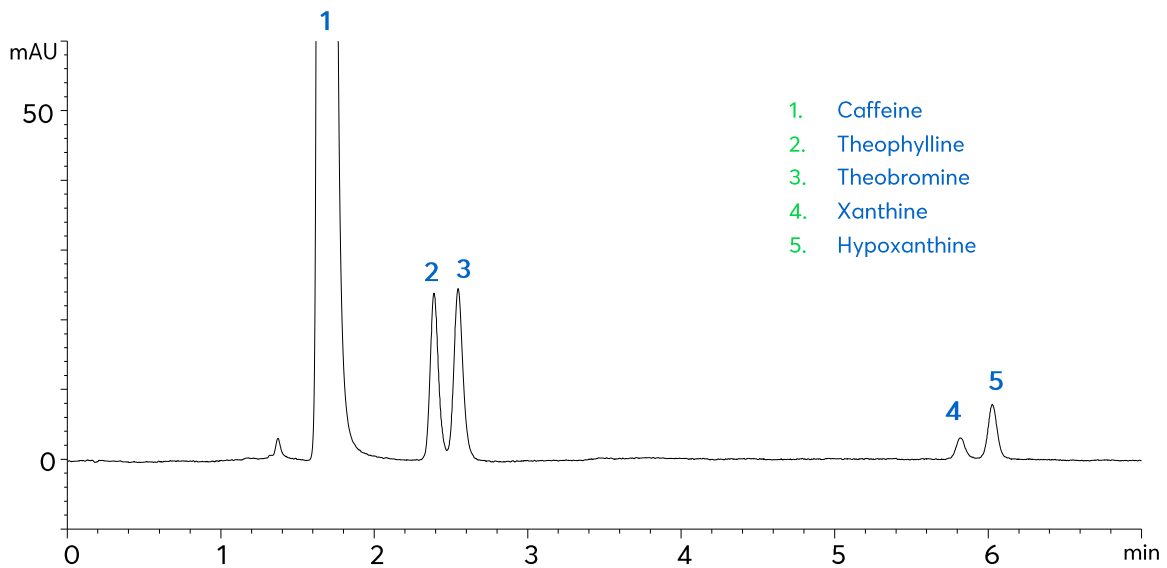


# Caffeine and Related Compounds using HILIC Mode



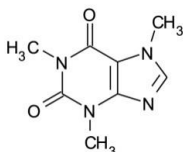
# Method Details

## CONDITIONS

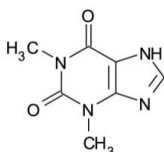
Column:	ACE 5 HILIC-N
Dimensions:	150 x 4.6 mm
Mobile Phase:	A: 10 mM ammonium formate pH 3.0 in MeCN/H <sub>2</sub> O (96:4 v/v) B: 10 mM ammonium formate pH 3.0 in MeCN/H <sub>2</sub> O (50:50 v/v)

Time (mins)	%B
0	0
15	100

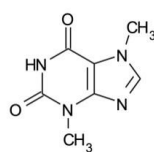
Flow Rate:	1.5 mL/min
Injection:	2 µL
Temperature:	15 °C
Detection:	UV, 275 nm
Sample:	Caffeine (25 mg/mL) with related substances at 0.5% w/w, dissolved in MeCN/H <sub>2</sub> O (90:10 v/v).



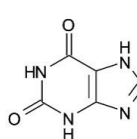
1. Caffeine



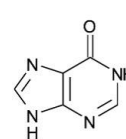
2. Theophylline



3. Theobromine



4. Xanthine



5. Hypoxanthine

## ORDERING TABLE

Product	Details	Size	Part number
Avantor® ACE® 5 HILIC-N	HPLC column	150 x 4.6 mm	HILN-5-1546U
Acetonitrile	VWR CHROMANORM® gradient grade	2.5 L	83639.320
Water	VWR CHROMANORM® gradient grade	2.5 L	83650.320
Ammonium formate	VWR CHROMANORM® for LC-MS	100 g	84884.180