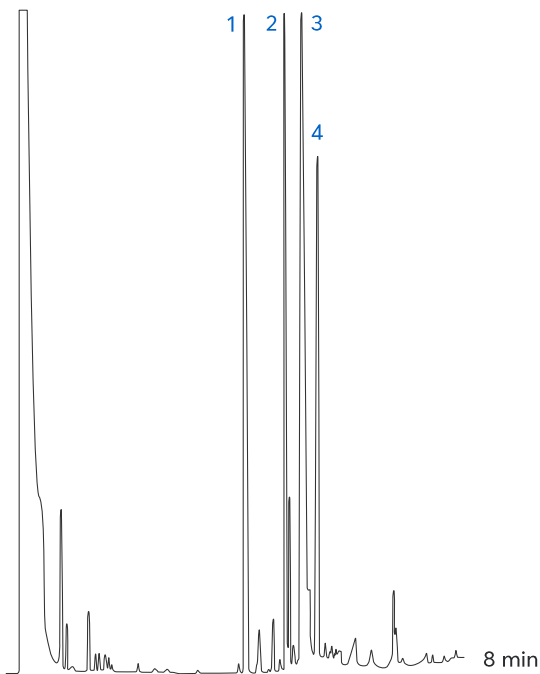


Cannabinoids using the Avantor[®] Hichrom HI-1 Phase



1. Docosane (I.S.)
2. Cannabidiol (CBD)
3. Tetrahydrocannabinol (THC)
4. Cannabinol (CBN)

Figure 1: Separation of cannabinoids using the Avantor[®] Hichrom HI-1 phase.

Method Details

CONDITIONS

Oven Program:	120 °C, 25 °C/min, 310 °C
Carrier Gas:	Hydrogen, 30 kPa
Injection:	Split 280 °C, 1.0 µL, 1:50 Split Ratio
Detector:	FID, 320 °C

The HI-1 is a versatile general-purpose column with an apolar 100% dimethylpolysiloxane stationary phase.

Suitable for a wide range of applications including PCBs, solvent impurities, natural gases, essential oils, pesticides, semi-volatiles and drugs of abuse.

ORDERING TABLE

Product	Details	Dimensions	Part Number
Avantor® Hichrom HI-1	GC Column	0.25 mm, 0.25 µm, 15 m	HI01-25-025-15