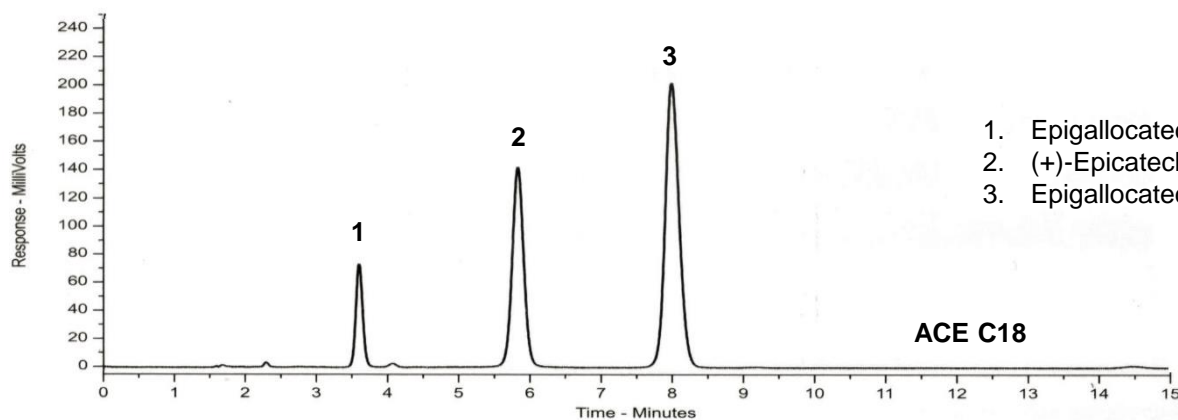


## Conditions

Column: ACE 5 C18, ACE 5 CN  
Dimensions: 150 x 4.6 mm  
Part Number: ACE-121-1546, ACE-124-1546  
Mobile Phase: MeOH/0.1% formic acid in H<sub>2</sub>O (25:75 v/v)  
Flow Rate: 1 mL/min  
Injection: 2 µL  
Temperature: Ambient  
Detection: UV, 280 nm



1. Epigallocatechin
2. (+)-Epicatechin
3. Epigallocatechin gallate

