

Catecholamines and their Metabolites in Urine by LC-MS/MS

ACE[®]
Ultra-inert
UHPLC & HPLC Columns

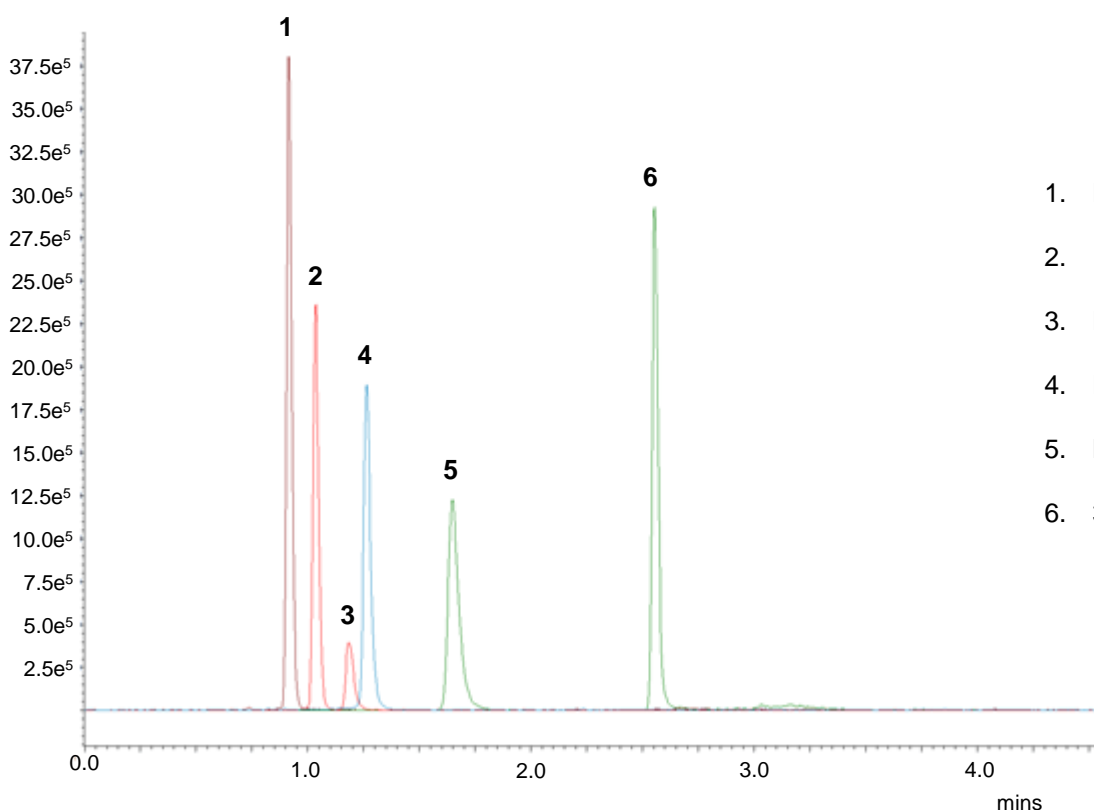
Application #AN4040

Conditions

Column: ACE UltraCore 2.5 SuperPhenylHexyl
Dimensions: 100 x 2.1 mm
Part Number: CORE-25B-1002U
Mobile Phase: A: 2 mM ammonium formate + 0.05% formic acid in H₂O
B: 2 mM ammonium formate + 0.05% formic acid in MeOH

Time (mins)	%B
0.00	0
1.00	70
1.10	70
1.11	0
4.50	0

Flow Rate: 0.3 mL/min
Injection: 10 µL
Temperature: 30 °C
Detection: Shimadzu LCMS-8040
ESI in positive ion mode
Sample: Standard 100 ng/mL in urine (after SPE purification)



1. Norepinephrine
(*m/z* 170 → 107)
2. Epinephrine
(*m/z* 184 → 166)
3. Normetanephrine
(*m/z* 184 → 166)
4. Dopamine
(*m/z* 154 → 91)
5. Metanephrine
(*m/z* 198 → 180)
6. 3-Methoxytyramine
(*m/z* 181 → 91)

Reproduced with permission of Shimadzu, France

© 2015 ACT Ltd. All rights reserved. All products are available worldwide.

For more information contact your local ACE distributor or visit
www.ace-hplc.com or email: info@ace-hplc.com


ACE[®]
UHPLC & HPLC
Columns