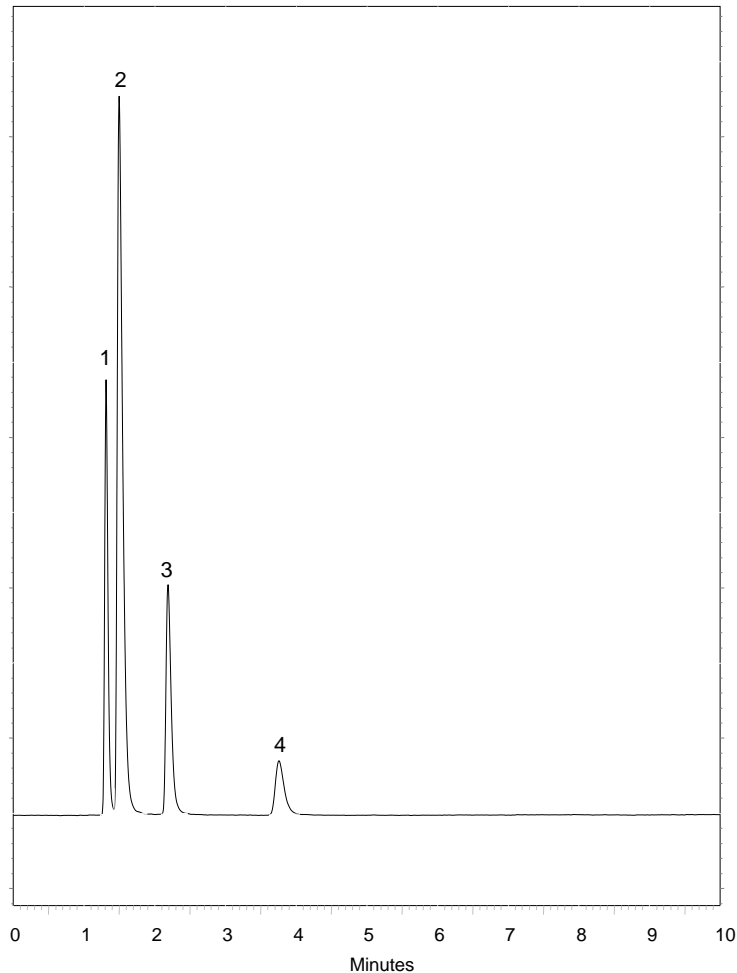


Catecholamine



Column : **5 μ Fortis H₂O 150x4.6mm**
p/n : **FHO-050705**

Mobile Phase: **H₂O + 0.1% Formic acid**

Flow : **0.8ml/min**
Temp : **20°C**
 λ : **270nm**

- 1. Dopamine**
- 2. Serotonin**
- 3. DOPAC**
- 4. 5-HIAA**