

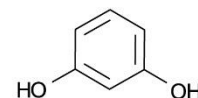
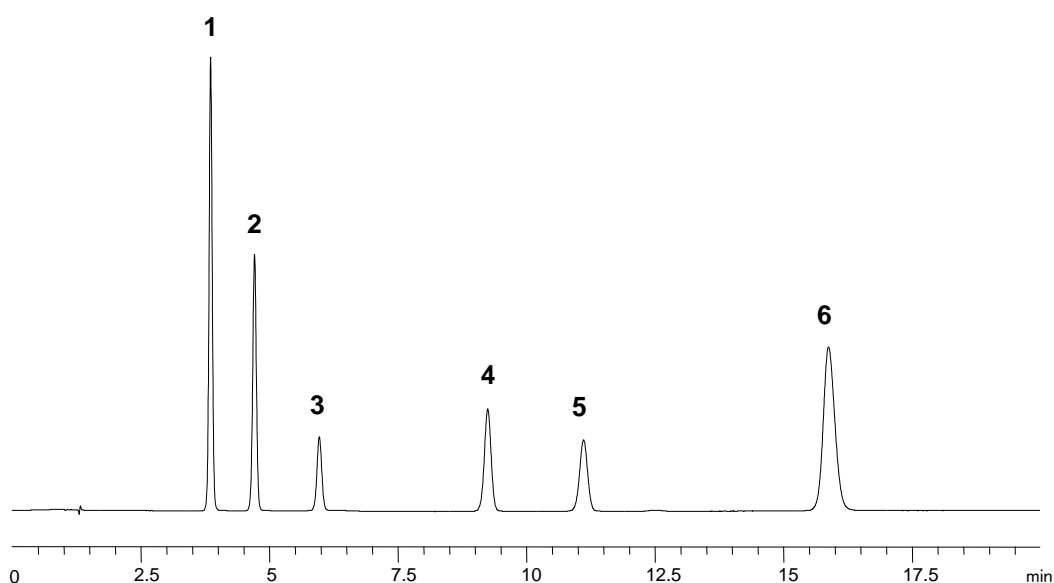
Catechols Mixture Separation (II)

ACE[®]
Ultra-inert
UHPLC & HPLC Columns

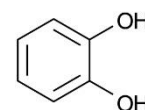
Application #AN1440

Conditions

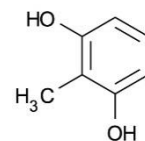
Column: ACE 3 C18-Amide
Dimensions: 150 x 4.6 mm
Part Number: EXL-1112-1546U
Mobile Phase: 20 mM H₃PO₄ in MeCN/H₂O (10:90 v/v)
Flow Rate: 1.5 mL/min
Injection: 5 µL
Temperature: 30 °C
Detection: UV, 270 nm



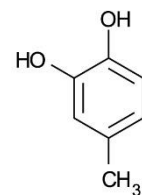
1. Resorcinol



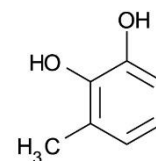
2. Catechol



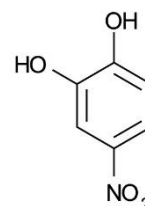
3. 2-Methylresorcinol



4. 4-Methylcatechol



5. 3-Methylcatechol



6. 4-Nitrocatechol

© 2015 ACT Ltd. All rights reserved. All products are available worldwide.

For more information contact your local ACE distributor or visit
www.ace-hplc.com or email: info@ace-hplc.com


ACE[®]
UHPLC & HPLC
Columns