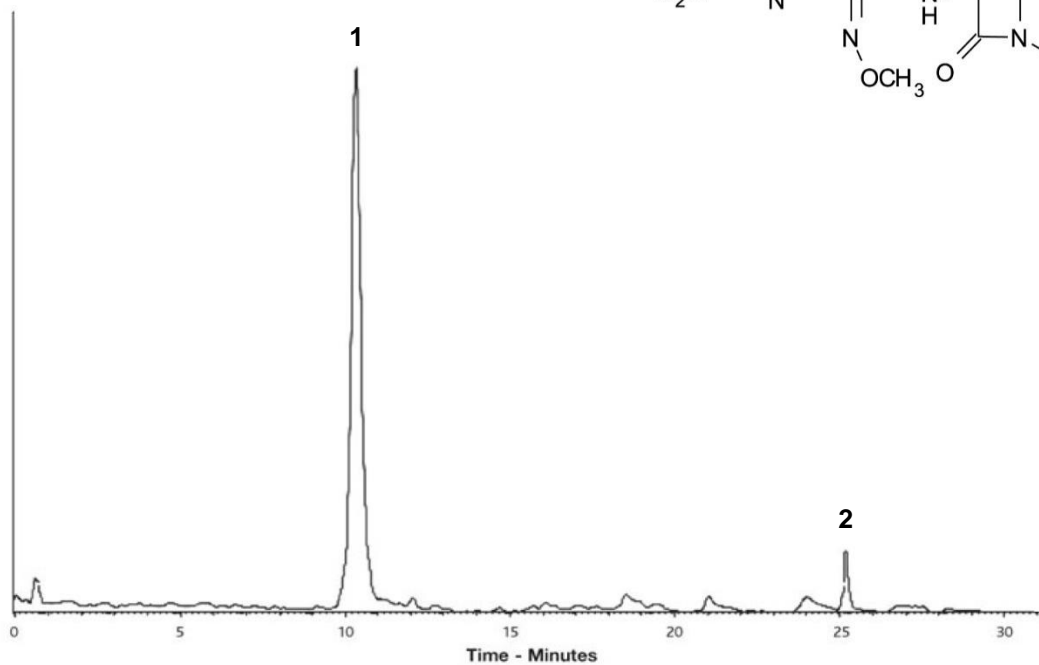
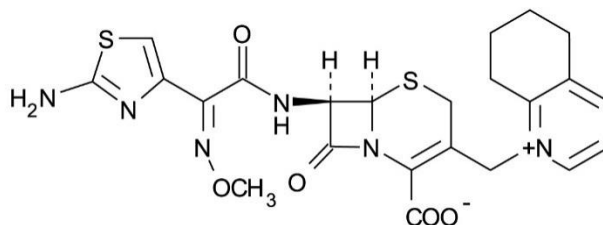


## Conditions

Column: ACE 5 C18  
Dimensions: 150 x 2.1 mm  
Part Number: ACE-121-1502  
Mobile Phase: A: 2 mM formic acid in H<sub>2</sub>O  
B: 2 mM formic acid in MeCN

Time (mins)	%B
0	5
1	5
10	95
30	95

Flow Rate: 0.2 mL/min  
Temperature: 25 °C  
Detection: ESI-MS (+)



1. Cefquinome (*m/z* 529.2)
2. Excipient