

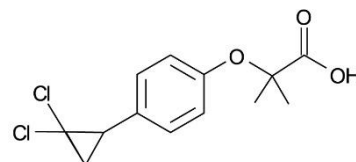
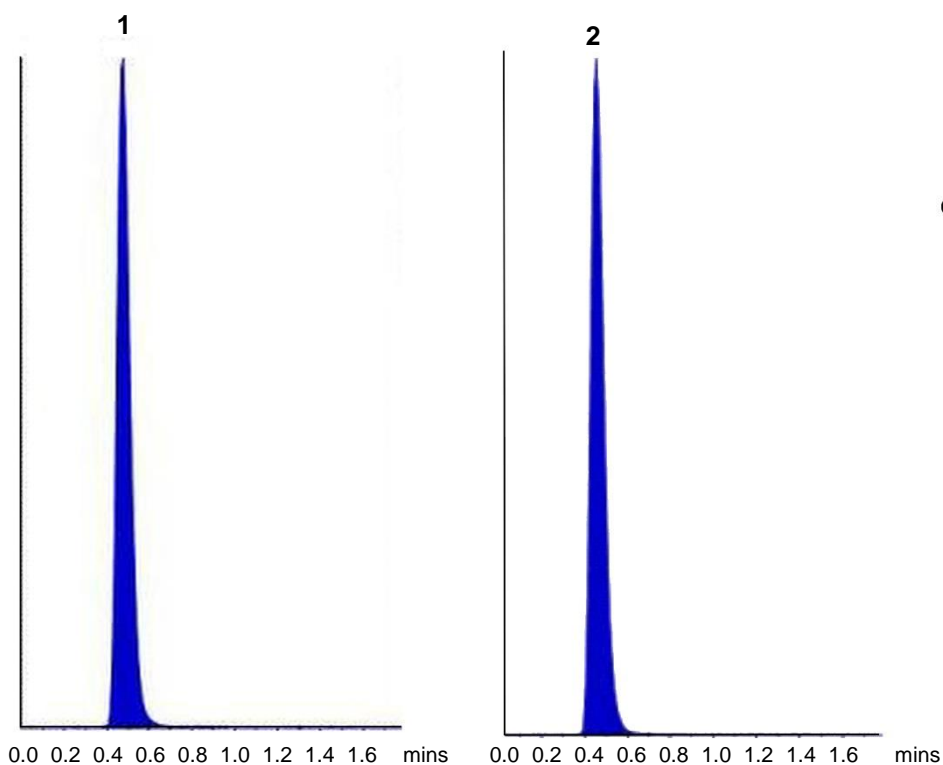
Ciprofibrate from Human Plasma by LC-MS/MS

ACE[®]
Ultra-inert
UHPLC & HPLC Columns

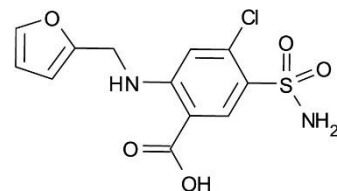
Application #AN2670

Conditions

Column: ACE 5 C18
Dimensions: 50 x 4.6 mm
Part Number: ACE-121-0546
Mobile Phase: 0.001% ammonia in MeOH/MeCN/H₂O (70:20:10 v/v/v)
Flow Rate: 1 mL/min
Injection: 20 µL
Temperature: Ambient
Detection: API 3200 triple quad MS
ESI in negative ion mode
Ion source temperature: 550 °C
Ion spray voltage: 4500 V



1. Ciprofibrate
(*m/z* 287.0 → 85.0)



2. Furosemide (IS)
(*m/z* 328.9 → 204.9)

Reproduced with permission of Indukaka Ipcowala College of Pharmacy, New Vallabh Vidyanagar, Gujarat, India

© 2015 ACT Ltd. All rights reserved. All products are available worldwide.

For more information contact your local ACE distributor or visit
www.ace-hplc.com or email: info@ace-hplc.com



ACE[®]
UHPLC & HPLC
Columns