

Clenbuterol in Equine Plasma by LC-MS/MS

Application #AN2050

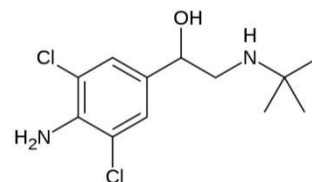
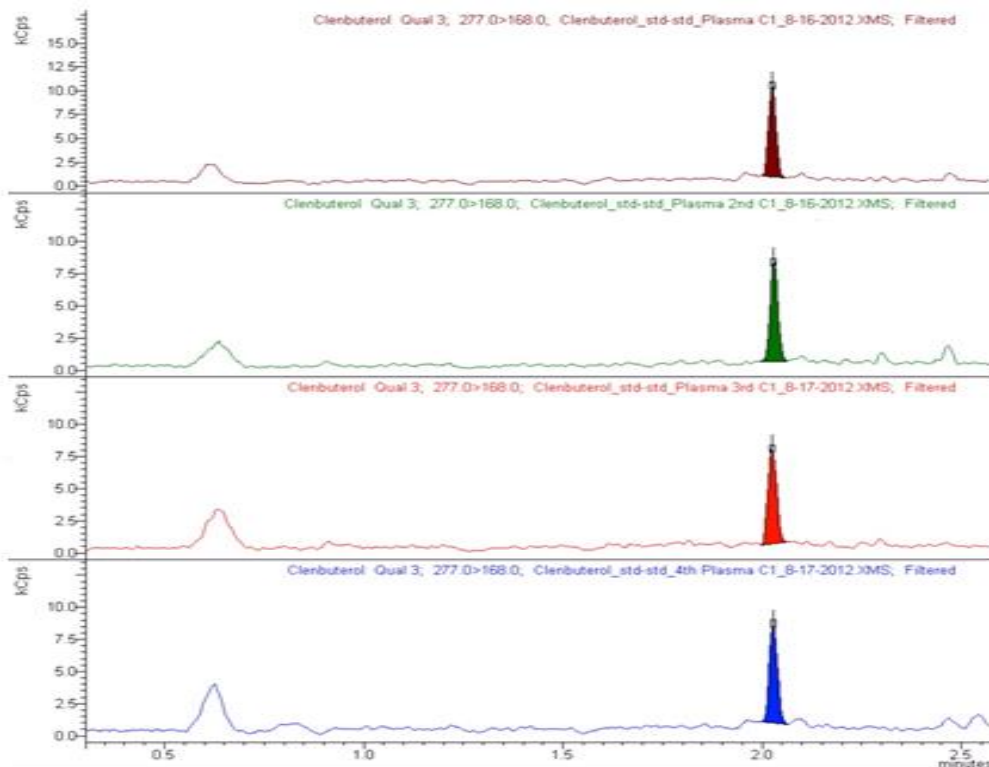
Conditions

Column: ACE 3 C18
Dimensions: 100 x 2.1 mm
Part Number: ACE-111-1002
Mobile Phase: A: 0.2% formic acid in H₂O
B: 0.2% formic acid in MeCN

Time (mins)	%B
0.0	10
0.3	10
2.5	95
2.8	10
4.5	10

Flow Rate: 0.45 mL/min
Injection: 30 µL
Detection: Bruker EVOQ Elite triple quad MS
VIP heated-ESI temperature: 300 °C
Cone gas temperature: 300 °C
Spray voltage: +3500 V

Representative MRM chromatograms of 5 ppt clenbuterol (150 fg on-column)



1. Clenbuterol
(*m/z* 277.1 → 168)

d9-Clenbuterol was used as
the internal standard
(*m/z* 286.1 → 204)