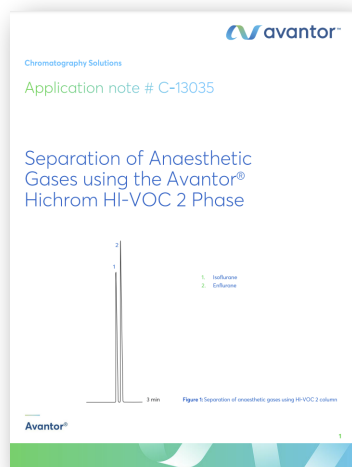


LAB NOTES Clinical Industry Analyses

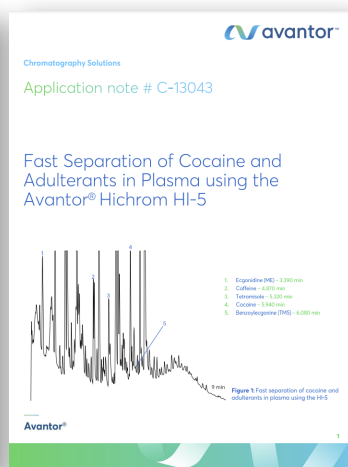


Laboratories conducting clinical HPLC analyses are a vital part of the US healthcare system. They analyze difficult matrices such as blood, plasma, urine, feces, and saliva, among others, to determine the presence and concentrations of key classes of compounds so that healthcare providers can treat their patients effectively. Moreover, they also support drug testing for pain management clinics and in the workplace. Clinical chromatographers and analysts need columns and applications that will provide dependable separations to ensure reliable, accurate chromatographic results. Our new **Clinical Industry Page** has clinical application guides, technical notes, numerous applications, and a **Clinical White Paper** to support clinical chromatographers.

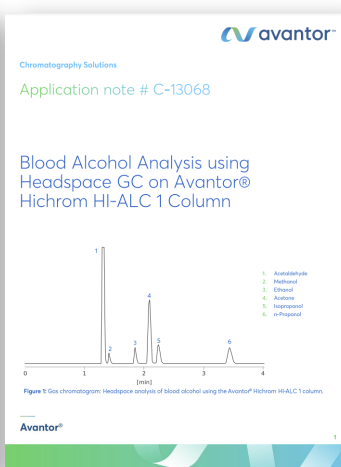
GC APPLICATIONS



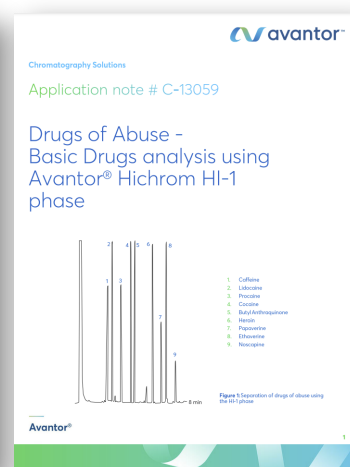
Anesthetic Gases



Cocaine and Adulterants in Plasma

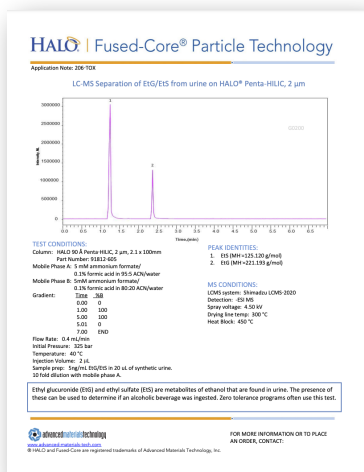


Blood Alcohol Analysis

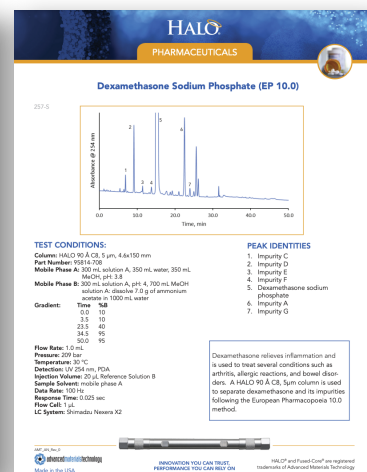


Drugs of Abuse

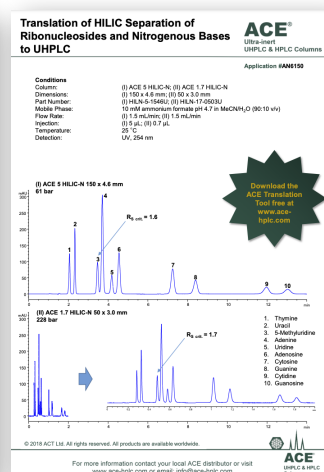
LC APPLICATIONS



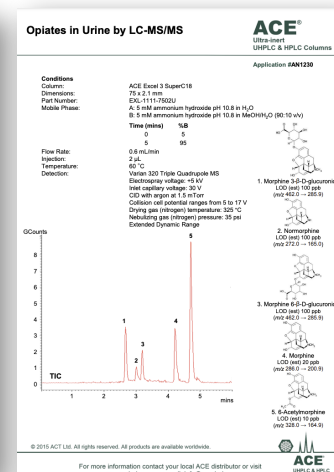
LC-MS Analysis of Ethyl Glucuronide (EtG) and Ethyl Sulfate (EtS)



Dexamethasone Sodium Phosphate (EP 10.0)



Translation of a HILIC Separation of Ribonucleosides and Nitrogenous Bases to UHPLC



Opiates in Urine by LC-MS-MS



mac-mod.com

info@mac-mod.com

800-441-7508

The applications above are a subset of the many applications that we offer for the Industrial Chemical Industry. If you don't see what you are looking for, check out all our [Clinical Applications](#).

To request a new application please fill out our application request form and give as much detail as possible.

[Request Application](#)



mac-mod.com

info@mac-mod.com

800-441-7508