

# Coffee Metabolite Profiling by LC-MS

**ACE**<sup>®</sup>  
Ultra-inert  
UHPLC & HPLC Columns

Application #AN2590

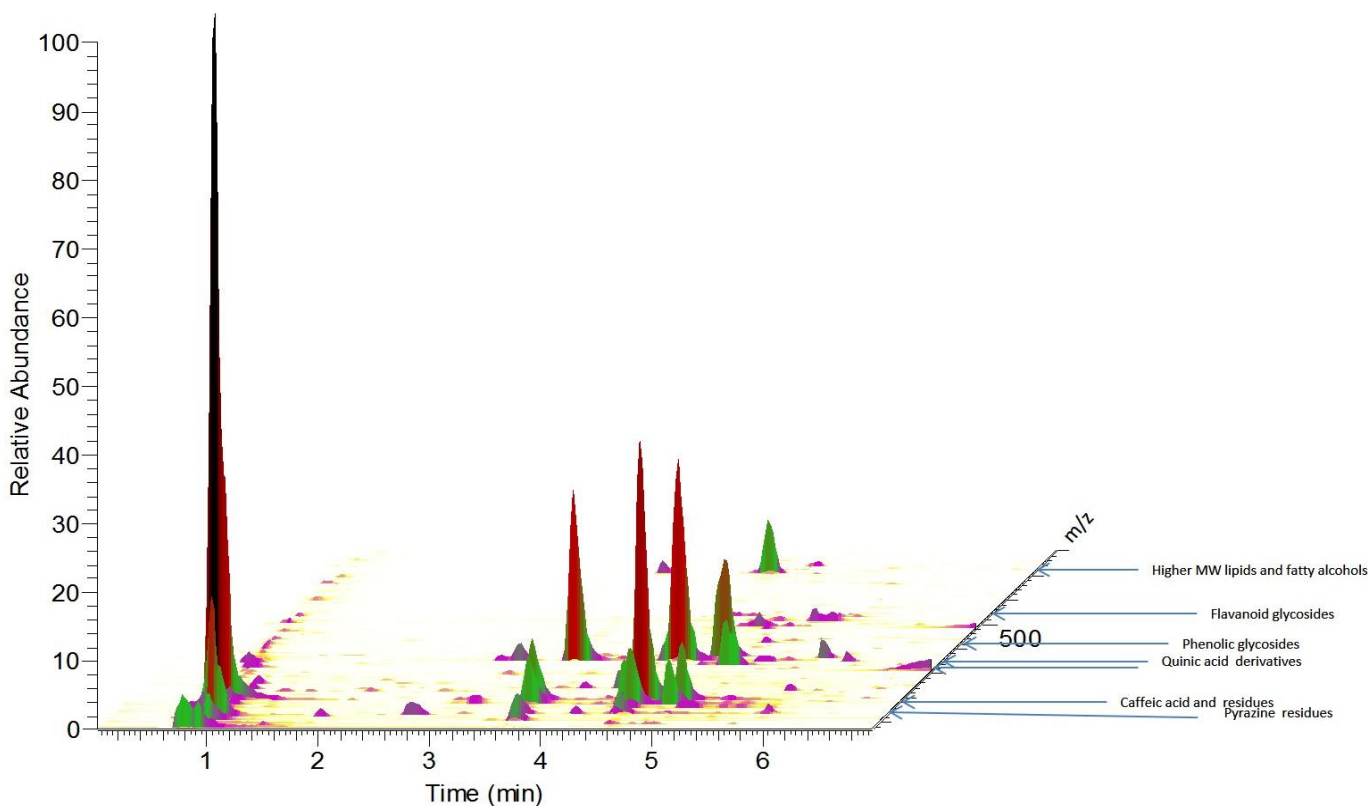
## Conditions

Column: ACE Excel 1.7 C18-Amide  
Dimensions: 100 x 2.1 mm  
Part Number: EXL-1712-1002U  
Mobile Phase: A: 0.01% formic acid in H<sub>2</sub>O  
B: 0.01% formic acid in MeCN

Time (mins)	%B
0.0	3
2.5	10
8.0	100
8.5	3
10.0	3

Flow Rate: 0.5 mL/min  
Detection: Exactive accurate mass MS system  
ESI in negative ion mode

Sample: Analytes between *m/z* 70-800 monitored  
Metabolites from coffee extracted into cold water by vortexing for 20 mins.  
Samples filtered prior to injection onto column and modular Accela LC system



Reproduced with permission of School of Pharmacy, University of Nottingham, UK  
© 2015 ACT Ltd. All rights reserved. All products are available worldwide.



For more information contact your local ACE distributor or visit  
[www.ace-hplc.com](http://www.ace-hplc.com) or email: [info@ace-hplc.com](mailto:info@ace-hplc.com)

**ACE**<sup>®</sup>  
UHPLC & HPLC  
Columns