

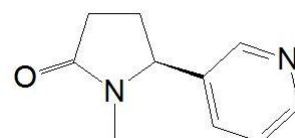
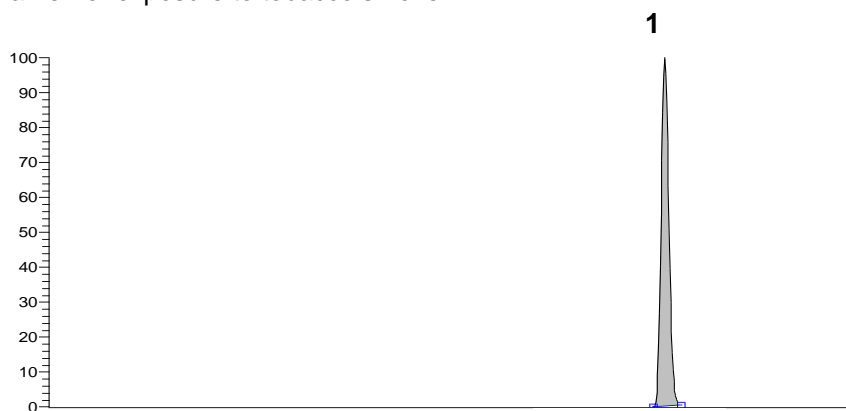
Conditions

Column: ACE 3 C18-AR
Dimensions: 150 x 2.1 mm
Part Number: ACE-119-1502
Mobile Phase: A: 0.1% ammonium acetate
B: MeOH

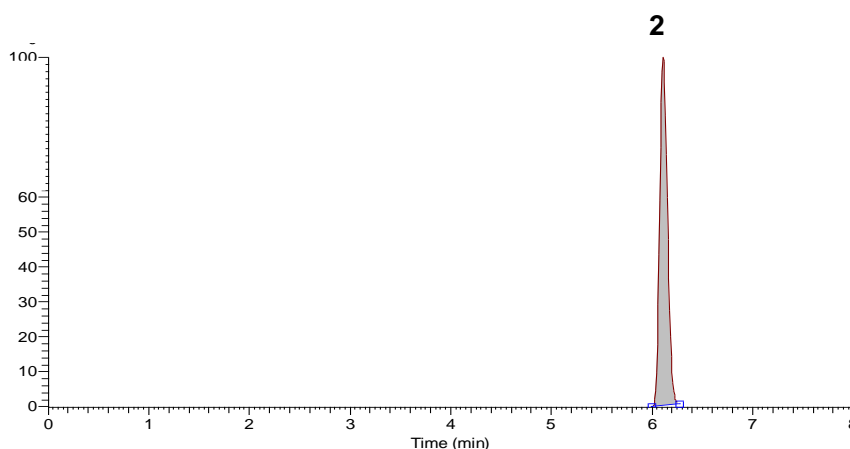
Time (mins)	%B
0.0	10
3.0	100
4.0	100
4.1	10
8.0	10

Flow Rate: 0.2 mL/min
Injection: 5 μ L
Temperature: 50 $^{\circ}$ C
Detection: Thermo TSQ Quantum MS
MRM ESI in positive ion mode
Sample: Fetal plasma extract

Cotinine is an alkaloid found in tobacco and is the predominant metabolite of nicotine. It is used as a biomarker for exposure to tobacco smoke.



1. Cotinine
(m/z 177.0 \rightarrow 80.0-80.2)



2. d3-Cotinine (I.S.)
(m/z 180.0 \rightarrow 80.0-80.2)