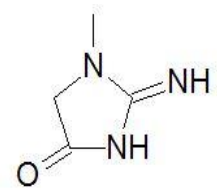
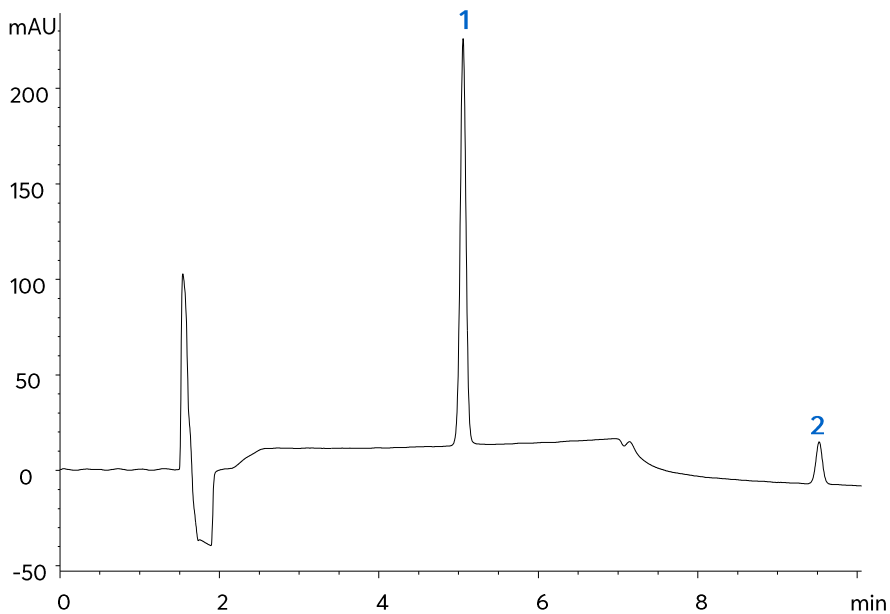
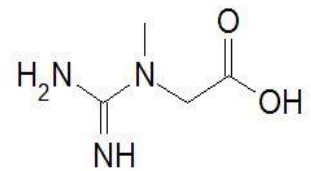


# Creatine and Metabolite Creatinine using HILIC Mode



1. Creatinine



2. Creatine

# Method Details

## CONDITIONS

Column:	ACE 5 HILIC-A
Dimensions:	150 x 4.6 mm
Mobile Phase:	A: 2 mM ammonium formate pH 3.0 in MeCN/H <sub>2</sub> O (95:5 v/v) B: 2 mM ammonium formate pH 3.0 in MeCN/H <sub>2</sub> O (50:50 v/v)

Time (mins)	%B
0	5
10	55
11	55
12	5
31	5

Flow Rate:	1.5 mL/min
Injection:	5 µL
Temperature:	25 °C
Detection:	UV, 230 nm

## ORDERING TABLE

Product	Details	Size	Part number
Avantor® ACE® 5 HILIC-A	HPLC Column	150 x 4.6 mm	HILA-5-1546U
Acetonitrile	VWR CHROMANORM® gradient grade	2.5 L	83639.320
Water	VWR CHROMANORM® gradient grade	2.5 L	83650.320
Ammonium formate	VWR CHROMANORM® for LC-MS	100 g	84884.180