

Detection of Catecholamines and Metanephrines in Urine by LC-MS/MS

ACE[®]
Ultra-inert
UHPLC & HPLC Columns

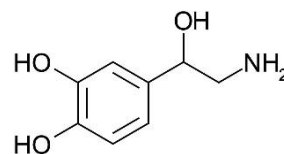
Conditions

Column: ACE Excel 2 C18-PFP
Dimensions: 100 x 2.1 mm
Part Number: EXL-1010-1002U
Mobile Phase: A: 0.25 mM ammonium formate and formic acid in water
B: 0.25 mM ammonium formate and formic acid in methanol

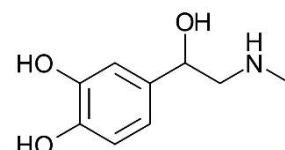
Time (mins)	%B
0	5
1.3	5
1.4	95
4.3	95
4.4	5
7.5	5

Flow Rate: 0.4 mL/min
Injection Volume: 7.5 µL
Temperature: 40 °C
Detection: AB Sciex triple quad MS
Source temperature: 700 °C
Positive ion mode ESI, MRM

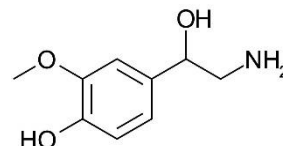
Application #AN6810



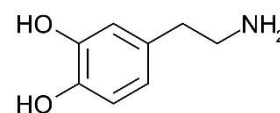
1. Norepinephrine
(*m/z* 152.1 → 107.1)



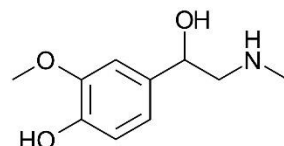
2. Epinephrine
(*m/z* 166.1 → 107.1)



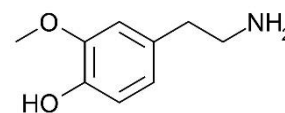
3. Normetanephrine
(*m/z* 166.1 → 134.0)



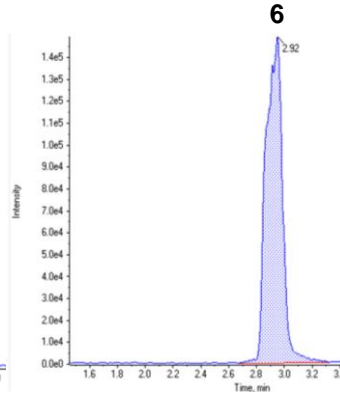
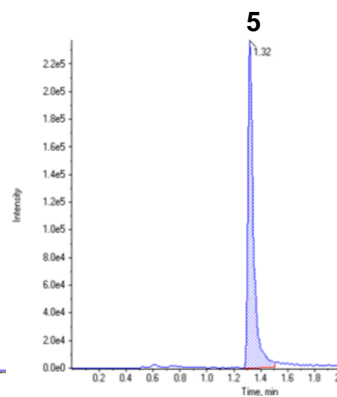
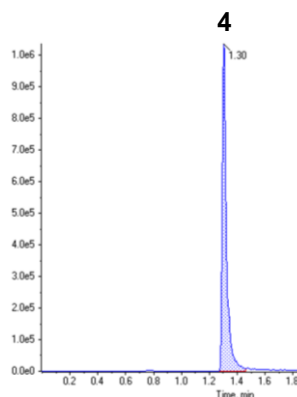
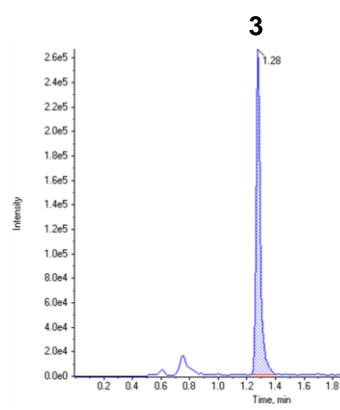
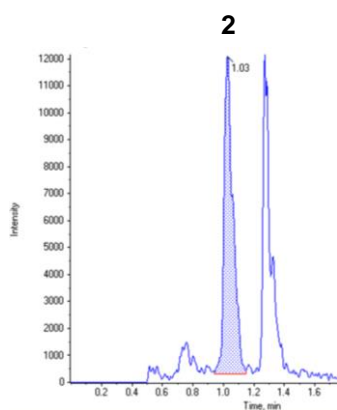
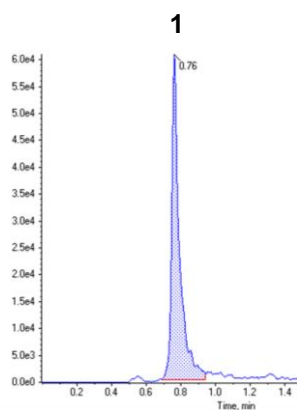
4. Dopamine
(*m/z* 154.1 → 91.1)



5. Metanephrine
(*m/z* 180.1 → 148.0)




6. 3-Methoxytyramine
(*m/z* 151.2 → 90.9)



Reproduced with permission of Biotage GB Ltd. For extraction conditions see Biotage Application Note AN871.

© 2019 ACT Ltd. All rights reserved. All products are available worldwide.

For more information contact your local ACE distributor or visit
www.ace-hplc.com or email: info@ace-hplc.com


ACE[®]
UHPLC & HPLC
Columns