

# Detection of Desmopressin in Serum by LC-MS/MS

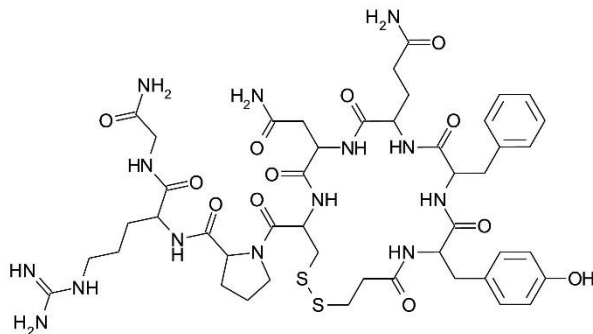
Application #AN6760

## Conditions

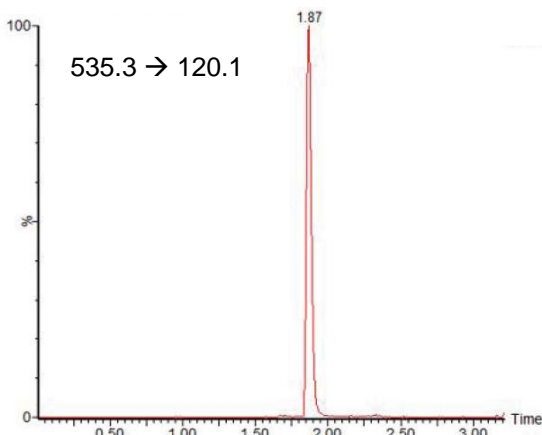
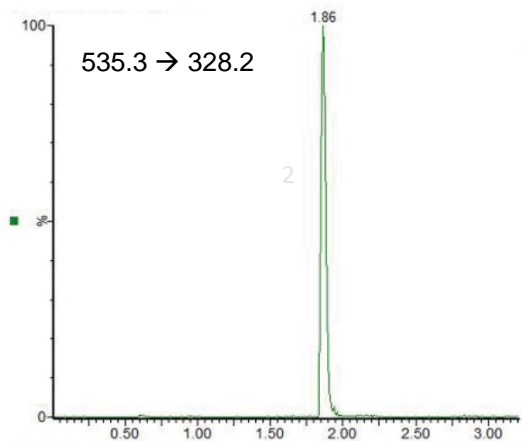
Column: ACE Excel 1.7 C18-Amide  
Dimensions: 100 x 2.1 mm  
Part Number: EXL-1712-1002U  
Mobile Phase: A: 0.1% formic acid in water  
B: 0.1% formic acid in acetonitrile

Time (mins)	%B
0	10
4.0	95
5.0	10
5.5	10

Flow Rate: 0.3 mL/min  
Injection Volume: 2  $\mu$ L  
Temperature: 40 °C  
Detection: XEVO TQS triple quad MS  
Desolvation temperature: 500 °C  
Ion source temperature: 150 °C  
Positive mode ESI, MRM  
Sample: Serum spiked at 5 ng/mL



Desmopressin  
m/z 535.3  $\rightarrow$  328.2 (Quant)  
m/z 535.3  $\rightarrow$  120.1 (Qual)



Reproduced with permission of Biotage GB Ltd. For extraction conditions see Biotage Application Note AN887.