

Detection of Kirenol in Herba Siegesbeckiae

ACE[®]
Ultra-inert
UHPLC & HPLC Columns

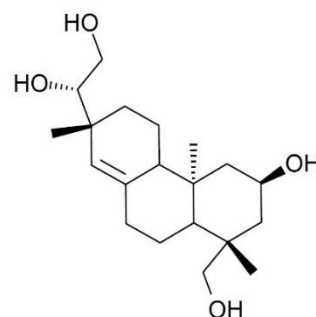
Application #AN6440

Conditions

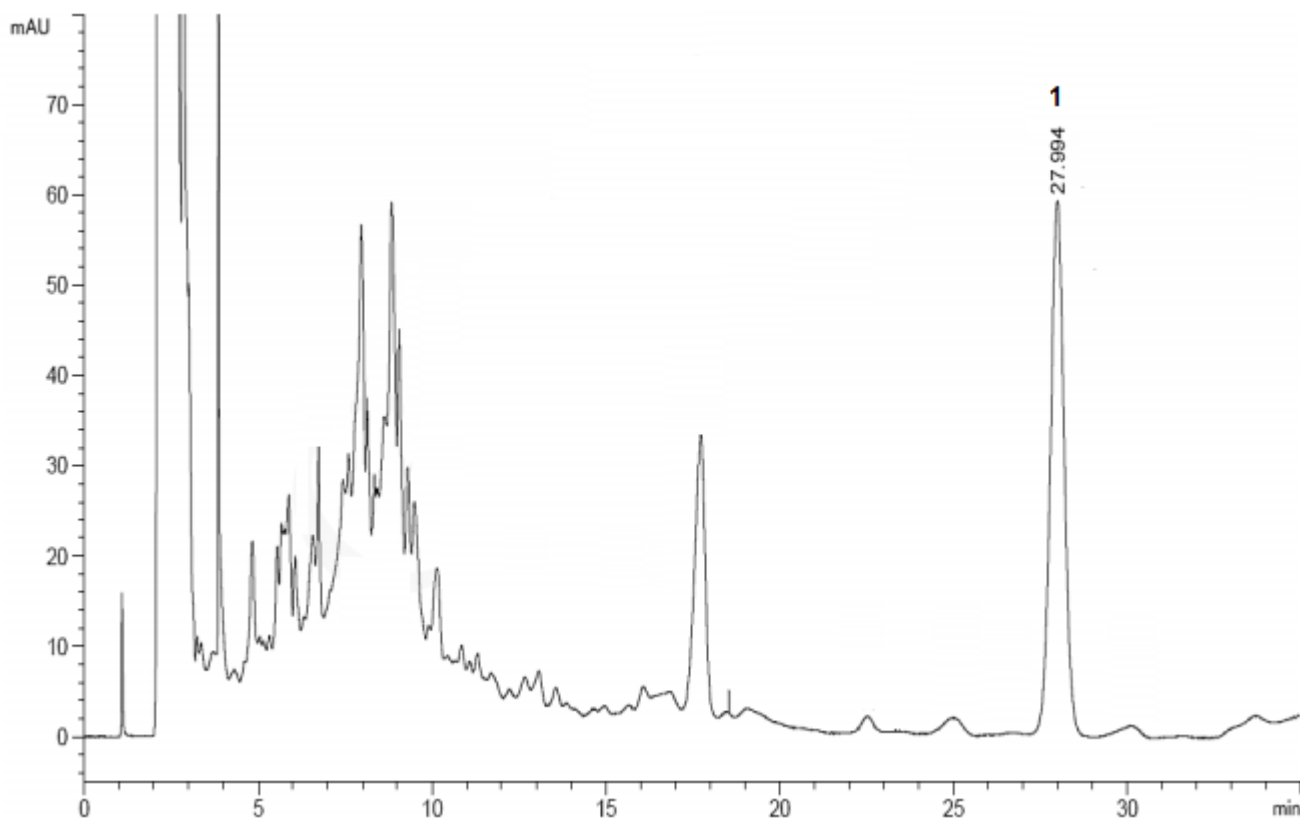
Column: ACE Excel 5 C18
Dimensions: 250 x 4.6 mm
Part Number: EXL-121-2546U
Mobile Phase: A: H₂O
B: MeCN

Time (mins)	%B
0	5
5	24
30	24

Flow Rate: 1 mL/min
Injection: 20 µL
Temperature: Ambient
Detection: UV, 215 nm
Method: ChP.2015, Vol.1



1. Kirenol



© 2018 ACT Ltd. All rights reserved. All products are available worldwide.

For more information contact your local ACE distributor or visit
www.ace-hplc.com or email: info@ace-hplc.com

ACE[®]
UHPLC & HPLC
Columns