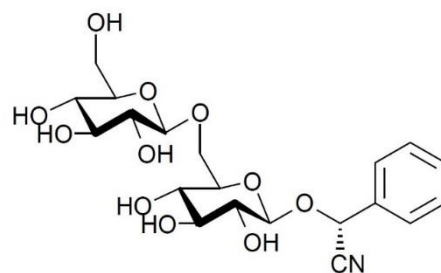


Determination of Amygdalin in Ansu Apricot Seed

Application #AN6010

Conditions

Column: ACE Excel 5 C18-AR
Dimensions: 250 x 4.6 mm
Part Number: EXL-129-2546U
Mobile Phase: MeCN/0.1% phosphoric acid (aq.)(8:92 v/v)
Flow Rate: 1.0 mL/min
Injection: 10 µL
Temperature: Ambient
Detection: UV, 207 nm
Monograph method: ChP.2015, Vol. 1



1. Amygdalin

