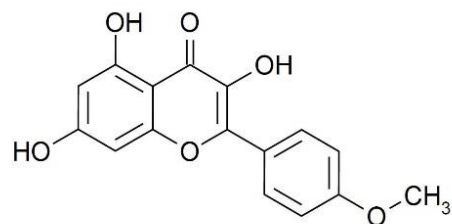


Determination of Kaempferide in Safflower

Application #AN6310

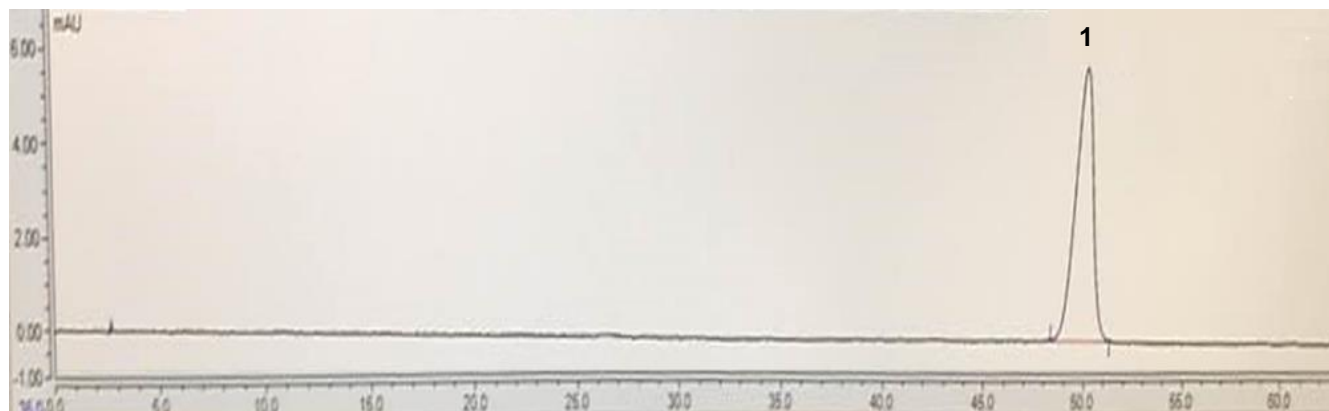
Conditions

Column:	ACE Excel 5 SuperC18
Dimensions:	250 x 4.6 mm
Part Number:	EXL-1211-2546U
Mobile Phase:	MeOH/ 0.4% H ₃ PO ₄ in water (55:45 v/v)
Flow Rate:	1.0 mL/min
Injection:	10 µL
Temperature:	Ambient
Detection:	UV, 367 nm
Monograph Method:	ChP.2015, Vol. 1



1. Kaempferide
2. Impurity

Reference Standard



Sample

