

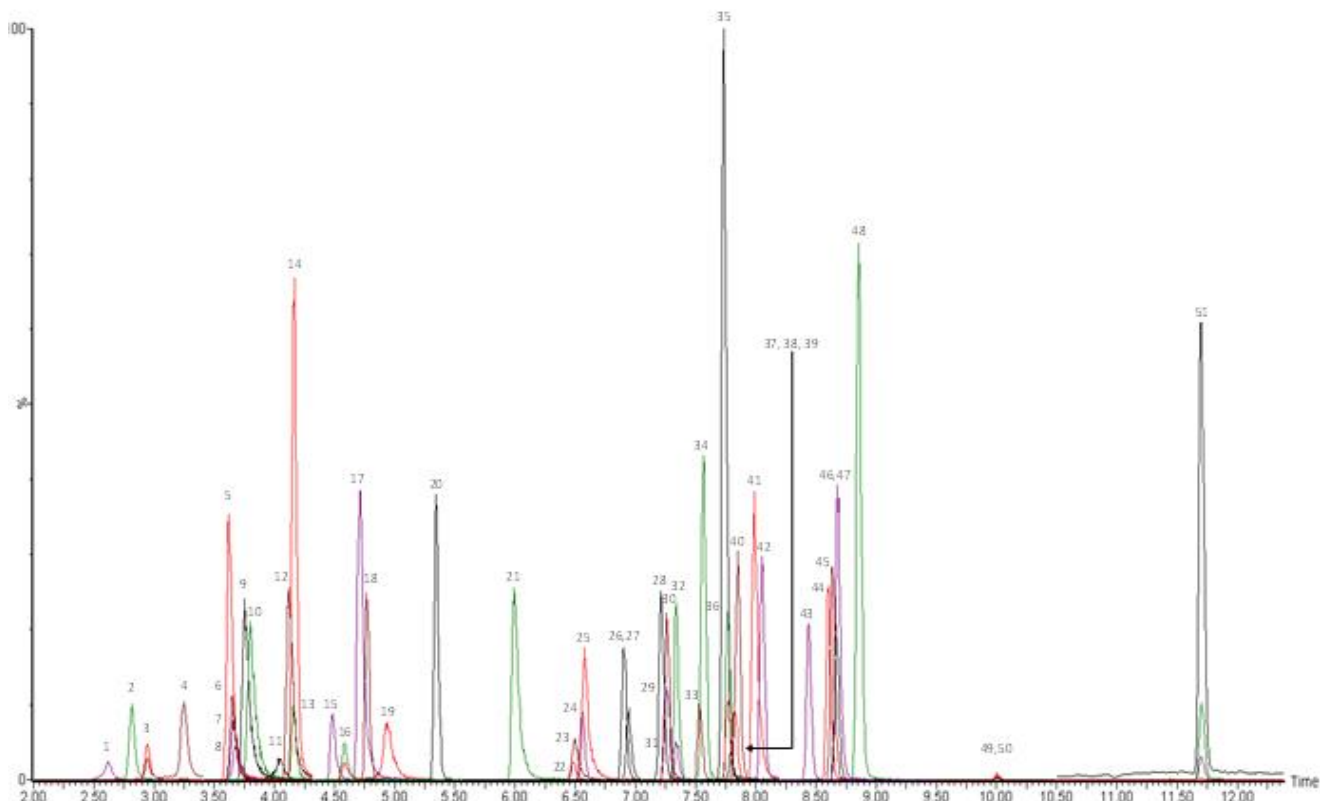
# Drugs of Abuse Screen by UHPLC-MS/MS

## Conditions

Column: ACE Excel 1.7 C18  
Dimensions: 100 x 2.1 mm  
Part Number: EXL-171-1002U  
Mobile Phase: A: 5 mM ammonium acetate in H<sub>2</sub>O  
B: 5 mM ammonium acetate in MeOH

Time (mins)	%B
0.0	10
10.0	90
11.9	90
13.4	10
15.5	10

Flow Rate: 0.3 mL/min  
Injection: 10 µL  
Temperature: 40 °C  
Detection: MS Quattro Premier XE triple quad  
MRM, positive and negative ESI mode  
Desolvation temperature: 450 °C  
Ion source temperature: 150 °C  
Collision gas pressure: 3.5 x 10<sup>-4</sup> mbar



Reproduced with permission of Biotage GB Ltd, UK

© 2015 ACT Ltd. All rights reserved. All products are available worldwide.

# Drugs Of Abuse Screen By UHPLC-MS/MS

Peak	Analyte	Rt	Q1 (Da)	Q3 (Da)	Peak	Analyte	Rt	Q1 (Da)	Q3 (Da)
1	Oxymorphone	2.62	302.2	198.1	27	Bromazepam	6.95	316.1	182.1
2	Morphine-D3	2.82	289.2	201.0	28	Ketamine	7.21	238.1	124.9
3	Morphine	2.95	286.2	201.0	29	Clonazepam	7.26	316.1	270.1
4	Hydromorphone	3.25	286.2	185.1	30	Nitrazepam	7.26	282.2	236.1
5	Amphetamine-D5	3.62	141.0	123.9	31	$\alpha$ -hydroxytriazolam	7.34	359.1	331.1
6	Amphetamine	3.65	136.0	118.9	32	Flunitrazepam	7.34	314.2	268.2
7	Dihydrocodeine	3.66	302.2	199.1	33	$\alpha$ -hydroxyalprazolam	7.54	325.2	297.1
8	MDA	3.67	180.1	105.0	34	Estazolam	7.56	295.2	267.2
9	MDMA	3.75	194.1	163.0	35	Zolpidem	7.73	308.2	235.1
10	Methamphetamine	3.80	150.0	90.9	36	Triazolam	7.77	343.0	308.1
11	Oxycodone	4.03	316.2	241.2	37	2-Hydroxyethylflurazepam	7.77	333.2	109.0
12	MDEA	4.12	208.2	163.0	38	Lorazepam	7.80	321.1	275.1
13	BZE-D3	4.15	293.1	171.0	39	Oxazepam	7.82	287.2	241.0
14	BZE	4.17	290.1	168.0	40	Alprazolam	7.85	309.2	281.2
15	6-MAM	4.48	328.2	165.1	41	Methadone	7.99	310.2	265.2
16	Codeine	4.59	300.3	215.1	42	Temazepam	8.05	301.1	255.1
17	Norfentanyl	4.71	233.1	84.0	43	Nordiazepam	8.44	271.1	139.9
18	7-Amino-clonazepam	4.77	286.2	121.0	44	Midazolam	8.61	326.2	291.2
19	Hydrocodone	4.94	300.2	199.1	45	Diazepam-D5	8.63	290.2	154.0
20	7-Amino-flunitrazepam	5.34	284.2	135.0	46	Diazepam	8.67	285.2	154.0
21	Cocaine	5.99	304.2	182.0	47	Flurazepam	8.68	388.2	315.1
22	Norbuprenorphine	6.47	414.3	101.0	48	Fentanyl	8.85	337.3	105.0
23	PCP	6.49	244.2	159.9	49	THC-COOH-D3	9.98	348.2	302.2
24	Zaleplon	6.55	306.2	264.2	50	THC-COOH	10.01	345.2	299.2
25	EDDP	6.58	278.2	234.2	51	Buprenorphine	11.70	468.3	101.0
26	Norketamine	6.90	224.1	124.9					

